



REPLACEMENT PARTS LIST  
GAS FIRED TUBE HEATER SERIES:

**SPW-JZ  
STW-JZ & -JZ-2**

**IWP  
IW & IW-2**

LOW INTENSITY TUBE TYPE INFRA RED HEATER  
FOR CAR WASH AND OUTDOOR APPLICATIONS

**NOTICE:**

*The manufacturer reserves the right to make changes to equipment and specifications without obligation of notification.*

*This publication or parts thereof may not be reproduced in any form without prior written consent from the manufacturer. Unauthorized use or distribution of this publication is strictly prohibited.*

*Schwank Group*

Customer & Technical Services:

1-877-446-3727  
Fax: 1-866-361-0523  
csr@schwankgroup.com

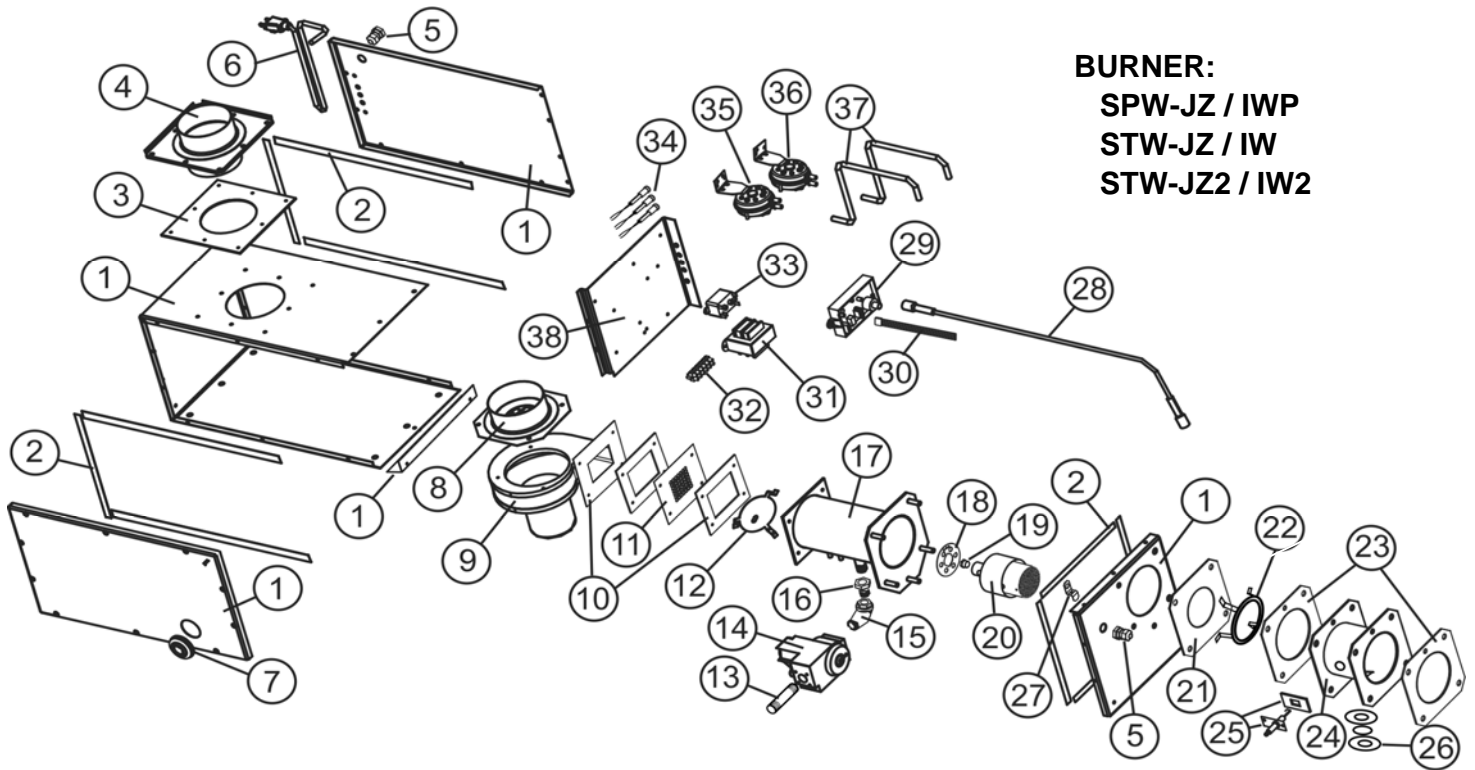
***Schwank and InfraSave brand products***

**www.SchwankGroup.com  
www.InfraSave.com**



**FOR YOUR SAFETY:**

This heater must only be serviced by a trained gas service technician.  
Failure to comply could result in personal injury, death, fire and/or property damage.



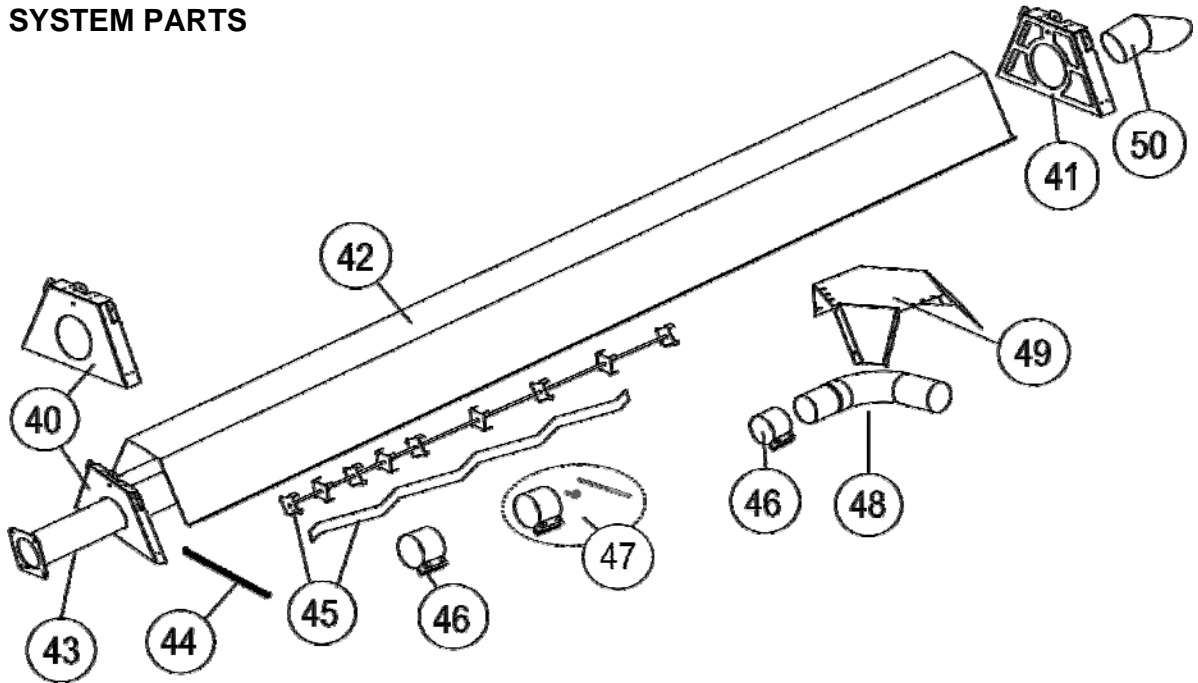
**BURNER:**  
**SPW-JZ / IWP**  
**STW-JZ / IW**  
**STW-JZ2 / IW2**

#	PART DESCRIPTION	INPUT (Mbh)	MODEL DASH #/ GAS TYPE	PART #	PART DESCRIPTION PRIMARY
1	BURNER HOUSING	ALL	STW-JZ(2) / IW(2)	JS-0582-WP	Burner housing harsh environment
		ALL	SPW-JZ / IWP	JS-0582-WP-P	Powder coated burner housing wet environments
2	BURNER HOUSING GASKET SET	ALL		JS-0591-WP	Housing gasket set
3	AIR INTAKE GASKET	ALL		JS-0601-WP	Air intake gasket (Each)
4	COMBUSTION AIR CONNECTION	ALL		JS-0583-15	4 inch Combustion air Connection
5	SEALTIGHT CONNECTOR	ALL		JP-2036-XX	Cord connector - liquid tight
6	ELECTRICAL CORD	ALL		JB-0567-XX	Electrical cord
7	WATERPROOF GROMMET	ALL		JP-2101-XX	Water proof gas pipe grommet
8	BLOWER COMBUSTION AIR INLET	45	NG	JS-0594-SC	Blower Restrictor Ring c/w Flange
		45	LP	JS-0594-ST	Blower Restrictor Ring c/w Flange
		60		JS-0594-ST	Blower Restrictor Ring c/w Flange
		80		JS-0595-SP	Blower Restrictor Ring c/w Flange
		80	-B	JS-0594-SC	Blower Restrictor Ring c/w Flange
		110	-B	JS-0595-AE	Blower Restrictor Ring c/w Flange
9	BLOWER ASSEMBLY	110-200		JS-0595-AA	Blower Restrictor Ring c/w Flange
		45-175		JS-0579-AA	Blower Assembly 1/35 HP - 45 to 175
		200		JS-0579-ZZ	Blower Assembly 1/20 HP - 200,000
10	BLOWER GASKET	ALL		JS-0578-XX	Outlet blower gasket (Each)
11	EQUALIZER PLATE	45	-X1; LP	JS-0593-XL	Outlet equalizer plate - 29 Holes
		45	-X1; NG	JS-0593-NG	Outlet equalizer plate - 25 Holes
		60-155	NG	JS-0593-XX	Outlet equalizer plate
		60-155	LP	JS-0593-XX	Outlet equalizer plate
		175	LP	JS-0593-XZ	Outlet equalizer plate
12	AIR RESTRICTOR	175-200	NG; 200 LP	JS-0593-XX	Outlet equalizer plate
		45	-X1	JS-0592-AR	Burner air restrictor (45-X1)
13	4" NIPPLE	ALL		JS-0590-GA	4" nipple

#	PART DESCRIPTION	INPUT (Mbh)	MODEL DASH #/ GAS TYPE	PART #	PART DESCRIPTION PRIMARY
14	GAS VALVE	45-155	NG	JL-0701-AA	Comb. Gas Valve 3.5" W.C. NG - 24VAC
		45-155	LP	JL-0703-AA	Comb. Gas Valve 10" W.C LP - 24VAC
		175-200	NG	JA-0506-XX	Slow Open Gas Valve 3.5" WC NG - 24Vac
		175-200	LP	JA-0507-XX	Slow Open Gas Valve 10" WC LP - 24Vac
15	90 DEGREE ELBOW FITTING 1/2"	ALL		JS-0588-XX	90 degree street elbow fitting
16	MANIFOLD BUSHING	ALL		JS-0589-XX	Manifold bushing
17	OUTER BURNER CHAMBER	ALL	STW-JZ(2) / IW(2)	JS-0504-WP	Outer burner chamber stainless steel
		ALL	SPW-JZ / IWP	JS-0504-XX	Outer burner chamber epoxy coat
18	BURNER CUP AIR RESTRICTOR RING	45	NG; LP	JS-0596-AA	Burner Cup air restr ring 9/32"
		60	LP	JS-0596-XX	Burner Cup air rest ring 0.375
		60-175	NG	JS-0596-XX	Burner Cup air rest ring 0.375
		80-155	LP	JS-0597-XX	Burner head air rest. ring .500
		175	-S; LP	JS-0597-XY	Burner Cup air rest ring 175-S LP
		200	-S; LP	JS-0597-YE	Burner Cup air rest ring 200-S LP
		200	-S; NG	JS-0597-YY	Burner Cup air rest ring 200-S NG
		19	MAIN BURNER ORIFICE	45	LP
		45	NG	JS-0730-DM	Gas orifice low intensity HR 30 DMS
		60	LP	JS-0742-DM	Gas orifice low intensity HTR 42 DMS
		60	NG	JS-0725-DM	Gas orifice low intensity HTR 25 DMS
		80	LP	JS-0736-DM	Gas orifice low intensity HTR 36 DMS
		80	NG	JS-0718-DM	Gas orifice low intensity HTR 18 DMS
		110	LP	JS-0731-DM	Gas orifice low intensity HTR 31 DMS
		110	NG	JS-0752-MM	Gas orifice low intensity HTR 5.2 mm
		130	LP	JS-0729-DM	Gas orifice low intensity HTR 29 DMS
		130	NG	JS-0758-MM	Gas orifice low intensity HTR 5.8 mm
		155	LP	JS-0714-IN	Gas orifice low intensity HTR 9/64 inch
		155	NG	JS-0725-IN	Gas orifice low intensity HTR 1/4 inch
		175	LP	JS-0724-DM	Gas orifice low intensity HTR 24 DMS
		175	NG	JS-0767-MM	Gas orifice low intensity HTR 6.7 mm
		200	LP	JS-0719-DM	Gas orifice low intensity HTR 19 DMS
		200	NG	JS-0730-IN	Gas orifice low intensity HTR 19/64 inch
20	BURNER CUP	45	NG; LP	JS-0510-LP-45	Burner Cup w/ Center Hole
		60-80	NG; LP	JS-0510-LP	Burner Cup
		110-155	NG; LP	JS-0512-XX	Burner Cup
		175	NG	JS-0512-XX	Burner Cup
		175	LP	JS-0512-UL	Burner Cup - Cast Aluminum - No Hole
		200	NG; LP	JS-0512-UL	Burner Cup - Cast Aluminum - No Hole
21	FLAME RECTIFICATION PLATE	175	-S LP	JS-0591-XY	Flame Rectifier Plate 175-S LP
22	FLAME RECTIFICATION	110, 130	-FB	JS-0592-RT	Flame Rectifier 110, 130 -FB Models
		200	LP	JS-0592-RX	Flame Rectifier 200-S LP
23	FLANGE GASKET	ALL		JS-0591-XX	Flange gasket (Each)
24	FLANGE ADAPTER	ALL	SPW-JZ	JS-0501-PW	4" flanged adapter - Painted
		ALL	STW-JZ	JS-0500-ZZ	4" flanged adapter - Stainless Steel
25	IGNITER KIT	ALL		JA-0571-KT	Igniter & gasket kit / DSI tube heater
26	SIGHT GLASS ASSEMBLY	ALL	SPW-JZ	JS-0536-XX	Sight glass assembly - painted
		ALL	STW-JZ	JS-0536-SK	Sight glass assembly - stainless steel
27	BURNER STABILIZING BRACKET	ALL		JS-0583-05	Burner suspension bracket

#	PART DESCRIPTION	INPUT (Mbh)	MODEL DASH #/ GAS TYPE	PART #	PART DESCRIPTION PRIMARY
28	IGNITION CABLE	ALL		JS-0518-SA	Hi voltage wire (24") STW - 2 x 1/4" Spades
29	IGNITION CONTROL	ALL		JB-0568-AA	Control - DSI 3 Try potted Gasliter 50N
30	IGNITION CONTROL WIRING HARNESS	ALL		JB-0568-WH	Potted DSI control wiring harness
31	STEP DOWN TRANSFORMER	ALL		JA-0775-XX	Transformer 120/24V, 20VA AT120B1028
32	TERMINAL BLOCK	ALL		JM-0455-DD	Terminal block
33	24V/120V RELAY SWITCH	ALL		JS-0568-CC	24V/120V Relay Switch
34	INDICATOR LAMPS	ALL		JW-0519-AM	Amber indicator light
		ALL		JW-0519-GR	Green indicator light
		ALL		JW-0519-RE	Red indicator light
35	COMBUSTION AIR PROVING SWITCH	45	-C; -UH	JS-0576-XX	Air proving Switch 0.48" WC
	"Normally Open" Switch	45	-X1	JS-0576-AA	Air proving Switch 0.85" WC
		60		JS-0576-YY	Air proving Switch 0.30" WC
		80		JS-0576-XX	Air proving Switch 0.48" WC
		110		JS-0575-YY	Air proving Switch 0.65" WC
		110	-B	JS-0575-ZB	Air proving Switch 0.90" WC
		130		JS-0575-YY	Air proving Switch 0.65" WC
		130	-B	JS-0576-UL	Air proving Switch 1.10" WC
		155		JS-0575-YY	Air proving Switch 0.65" WC
		155	-A	JS-0575-UG	Air proving Switch 1.00" WC
		175	-S; NG	JS-0576-AA	Air proving Switch 0.85" WC
		175	-S; LP	JS-0576-XY	Air proving Switch 1.15" WC
		200	-S	JS-0575-ZA	Air proving Switch 1.40" WC
36	BLOCKED FLUE PRESSURE SWITCH	45	-X1	JS-0577-YY	Blocked flue switch 0.90" WC
	"Normally Closed" Switch	45	-C; -UH	JS-0577-ZZ	Blocked flue switch 1.41" WC
		60	NG; LP	JS-0577-SS	Blocked flue switch 0.58" WC
		110	-B	JS-0578-UL	Blocked flue switch 1.03" WC
		130	-B	JS-0577-XZ	Blocked flue switch 1.25" WC
		80-155	NG; LP	JS-0577-YY	Blocked flue switch 0.90" WC
		175	-S; NG	JS-0577-ZZ	Blocked flue switch 1.41" WC
		175	-S; LP	JS-0577-XY	Blocked flue switch 1.20" WC
		200	-S; NG	JS-0577-UW	Blocked flue switch 1.33" WC
		200	-S; LP	JS-0578-BB	Blocked flue switch 1.50" WC
37	PRESSURE SWITCH TUBING	ALL		JS-0572-SE	P.V.C. tubing set (2 x 20")
38	COMPONENT PLATE	ALL		JS-0583-41	Component Mounting Plate
	WIRING KIT Low Voltage (not shown)	ALL		JW-WXXX-HX	Wiring kit w/ Harness - harsh environment

# TUBE SYSTEM PARTS



#	PART DESCRIPTION	INPUT (Mbh)	MODEL DASH #/ GAS TYPE	PART #	PART DESCRIPTION PRIMARY
40	PLATE HANGER: Aluminized Steel			JS-0506-JZ	Aluminized end plate hanger
	Stainless Steel		STW-JZ2, IW2	JS-0506-SZ	Stainless Steel end plate hanger
41	WEBBED HANGER: Aluminized Steel			JS-0505-JZ	Webbed Hanger - Aluminized Steel
	Stainless Steel			JS-0505-SZ	Webbed Hanger - Stainless Steel
42	REFLECTOR: Aluminized Steel			JS-0502-JZ	Reflector 24" x 116" - Aluminized Steel
	Stainless Steel		STW-JZ2, IW2	JS-0502-ST-S	Reflector 24" x 116" - Stainless Steel
43	LOW INTENSITY TUBE:	45-155		JA-0501-SW-P	Aluminized tube,flang,swage, no ports
		175-200		JA-0500-SW-P	Stainless Steel tube,flange,swage, no ports
		45-200		JS-0511-SW-P	Painted aluminized tube swaged
		45-200	STW-JZ2, IW2	JS-0500-SW	Stainless Steel tube swaged
44	REFLECTOR BRACE: Aluminized Steel			JS-0506-RB	Reflector brace - Aluminized Steel
	Stainless Steel			JS-0506-SB	Reflector brace - Stainless Steel
45	TURBULATOR <i>(see Table in STW-JZ I&amp;O Manual)</i>	45-80	20 ft	JS-0533-SH	Turbulator 4' Aluminized Steel
		45-80	20 ft	JS-0533-LG	Turbulator 10' Aluminized Steel
		60-80	30 ft	JS-0533-SL	Turbulator 8 ft stainless steel
		110-125	-B; 30 ft	JS-0533-SS	Turbulator 5 ft stainless steel
		110-125	-B; 30 ft	JS-0533-SL	Turbulator 8 ft stainless steel
		80-150	-B; 40 ft	JS-0533-UA	Turbulator 2' Aluminized Steel
		110-150	-B; 50 ft	JS-0533-UA	Turbulator 2' Aluminized Steel
		175	60-70 ft	JS-0533-SH	Turbulator 4' Aluminized Steel
		175-200	50 ft	JS-0533-LG	Turbulator 10' Aluminized Steel
46	COUPLER			JA-0516-SW	4" swaged tube coupler torctite
				JA-0516-RK	Coupler 4" with 1/4" Rivet & Drill Bit
47	COUPLER KIT 175 & 200 Mbh	175-200	1st & 2nd Joints	JA-0516-RK	Coupler 4" with 1/4" Rivet & Drill Bit
				JA-0516-SW	90 degree elbow - Aluminized Steel
48	90° ELBOW 4": Aluminized Steel			JA-0508-SW	90 degree elbow - Aluminized Steel
	Stainless Steel		STW-JZ2, IW2	JA-0508-SS	90 degree elbow - Stainless Steel
49	90° ELBOW REFLECTOR: Alum'd Steel	ALL		JS-0503-US	Reflector Cap for 90° Elbow - Aluminized Steel
	Stainless Steel		STW-JZ2, IW2	JS-0503-SZ	Reflector Cap for 90° Elbow - Stainless Steel
50	HORIZONTAL VENT TERMINATION		OPTIONAL	JA-0528-XX	4" horizontal wall vent terminal