



Price Catalog 2024

Prices in effect April 1, 2024

Release 24-1A, April 1, 2024, Canada



www.schwankgroup.com

Contents

General Information	3
Heating Solutions	4
Tube Heaters	4
High-intensity Heaters	41
Outdoor Heaters	45
Electric Heaters	53
MonsterFans (HVLS)	62
Air Curtains	68

General Information

Terms and Conditions:

- All pricing: F.O.B.: Waynesboro, GA or Mississauga, ON
- Credit Terms
- Warranty
- Restocking Returns
- See more information of Schwank's Terms & Conditions: www.schwankgroup.com/schwank-terms/

Infrasave Returns Policy

Please contact Customer Service regarding any product return: 1-877-686-3779; csr@schwankgroup.com

www.schwankgroup.com/schwank-terms/

Charge Backs

A heater must be properly commissioned and the Commissioning Form accurately completed and returned to Schwank. A Commissioning Form is located in the I&O Manual supplied with each heater.

Any charge back claim must be approved in writing by Infrasave Technical Services prior to commencement of work.

Freight Zones & Policy

<https://www.infrasave.com/price-lists/canada/>

Product Warranty Summary

For complete warranty terms, refer to the I&O Manuals.

<https://www.infrasave.com/warranty/>

Heating Solutions

Tube Heaters

Tube Heaters

General Information	5
phantomSchwank	6
IW/IWP/IWS Series	7 - 18
IQ Series	19 - 21
ITB/ITT Series	22 - 30
P40 Series	31 - 33
Tube Heater Accessories & Controls	34 - 40

General Information

Tube Heater Models

Ordering Tube Heater Kits

A tube heater can be ordered as a Complete Kit System or by ordering the individual Burner and Tube component kits that comprise the system.

1. Refer to the Complete Kit Systems listed for each model on the pages below and list pricing for each system.
2. The Burner and Tube Kit part numbers that comprise any Complete System are listed to the right of the Complete Systems.
3. Part Numbers and Pricing for the Burner and Tube Kits are listed on the page following the Complete System listing.

Fuel Type and Field Conversion

Only applied to S100, STS, SPW, STW & STWS

Burner input capacities: 40,000, 45,000, 60,000, 80,000, 125,000 & 150,000 BTUh

1. All burners up to 150,000 Btuh (excluding 110,000) are produced and stocked for natural gas fuel. A Field Conversion Kit is required for the conversion of a burner to LP gas. See accessories page for a listing of Conversion Kits.

Burner input capacities: 110,000, 175,000, & 200,000 Btuh:

1. Field Conversion Kits are available for 175,000 and 200,000 burners, but the conversion is more substantial than lower inputs.
2. Place your order for 110,000, 175,000, and 200,000 input Tube Heater Systems for the appropriate fuel. See model price pages below for details.

Power Supply and Line Voltage

1. All tube heater models have a 120Vac combustion air blower motor, requiring 120Vac supplied to the burner.
2. A step-down transformer (120/24Vac) provides 24Vac to ignition and gas controls and a 24 Vac thermostat (field supplied).

3. All tube heater models are factory ready for either a Line Voltage or 24Vac Thermostat.
4. To control multiple tube heaters with one 24Vac Thermostat:
 - a. A 24Vac Thermostat controls one heater
 - b. EACH additional heater requires a relay switch to close the thermostat terminals in the burner (see below pages)

Connecting a Tube Heater to the Gas Supply

1. Tube heaters require a flexible gas connector for connection to the gas supply.
2. The manufacturer supplies all-tube heater burners with a flexible gas connector to the gas supply.
3. The flexible gas connector is approved for indoor or outdoor use and is shipped in the Burner Kit carton.
4. CANADA Minimum length for tube heater flexible connector is 30 inches.
5. USA Minimum length for tube heater flexible connector is 24 inches.
6. Refer to the table below for the correct sized connector supplied and must be installed.

Flexible Gas Connector

Input (Btuh)	Required ID x Length
40,000 to 125,000	1/2" x 24"
150,000 to 250,000	3/4" x 36"

High Altitude Application

1. Refer to the product manual for model details and orifice chart.

phantomSchwank STP Series

Outdoor Patio Tube Heater

www.schwankgroup.com/products/tube-heaters/phantomSchwank

→ Features

The phantomSchwank offers intuitive smart wireless control, versatile mounting options, wind resistance, and EC Motor ultra-quiet operation.

- 35,000 – 115,000 input BTU/HR models
- 12' and 17' heater lengths
- Available in NG 2-stage models, with optional LP conversion kit
- Mounting options range from 8' to 16' heights
- Built-in wireless smart controls, with easy use from mobile app or web browser
- Screwless swing-down cabinet for improved serviceability
- High-efficiency EC Motor
- Warranty includes; 10-year burner, 10-year tubes, 3-year components



2-Stage Complete Tube Heater Systems

ORDER BY KIT PART #	CAPACITY INPUT: High	CAPACITY INPUT: Low	TUBE LENGTH	FUEL	Conversion Kit #	LIST PRICE
STP-TA05-10-BN	50,000	35,000	10	NG	JS-0554-LL-TP	\$4,699.00
STP-TA08-10-BN	80,000	60,000	10	NG	JS-0554-NL-TP	\$5,349.00
STP-TA11-15-BN	115,000	80,000	15	NG	JS-0554-PL-TP	\$5,799.00

phantomSchwank Accessories

PART #	DESCRIPTION	LIST PRICE
JS-0507-BA-K10	STP mounting kit, 0 degree, 10 ft tube	\$210.00
JS-0507-BA-K15	STP mounting kit, 0 degree, 15 ft tube	\$315.00
JS-0507-BB-K10	STP-TA05/08 mounting kit, 30 degree, 10 ft tube	\$260.00
JS-0507-BC-K10	STP-TA05/08 mounting kit, 45 degree, 10 ft tube	\$270.00
JS-0507-BF-K15	STP-TA11 mounting kit, 30 degree, 15 ft tube	\$390.00
JS-0507-BH-K15	STP-TA11 mounting kit, 45 degree, 15 ft tube	\$405.00
JM-0225-XX	Two-stage rotary control	\$280.00
JL-0771-RC	Type 1 Hose connector - 1/2" x 30"	\$96.00
JS-0554-LL-TP	Conversion kit, two-stage STP 50/35 MBH, NG to LP	\$78.00
JS-0554-NL-TP	Conversion kit, two-stage STP 80/60 MBH, NG to LP	\$78.00
JS-0554-PL-TP	Conversion kit, two-stage STP 115/80 MBH, NG to LP	\$78.00

IWP/IWP2 Series

Outdoor Patio, Wet or Damp Environment Tube Heater

www.infrasave.com/products/iw-series/

→ Features

A preferred model for covered and enclosed patio areas; most economical solution. Available in single-stage and 2-stage models with a powder coated weather tight cabinet and aluminized steel: reflectors and tubes. Also a great option for wash bays and damp environments.



BURNER KIT INCLUDES: Powder coated housing, flexible gas connector, status indicator lights, electrical cord & plug, mounted igniter, birdscreen 4" diameter air intake adapter on blower.

ALL Tubes are Aluminized steel swaged, aluminized reflectors, end caps, hangers, tube couplers and turbulator.

- Fresh air adapter and cap for 'outside' combustion air
- Moisture resistant spark ignition package
- Tough, durable finish
- Whisper Quiet Ceramic Burner
- 24V or Line Voltage Thermostat Ready
- Flexible system configurations including straight, U-shaped, and L-shaped
- Focus Shield' Reflector & End Caps for Premier IR Heat Output
- Warranty includes; 10-year tube, 10-year burner cup, 3-year components

IWP Single-Stage Series

ORDER BY KIT PART #	CAPACITY INPUT (Btuh)	TUBE LENGTH	FUEL	Burner Kit #	Tube Kit 1 #	Tube Kit 2 #	LIST PRICE
PU-PJ40-CN	40,000	10'U	NG*				\$3,304.00
IWP-45-20-CN	45,000	20'	NG*	JJ-045W-CN	TW-1420-JZ	-	\$3,359.00
IWP-60-20-CN	60,000	20'	NG*	JJ-060W-CN	TW-1420-JZ	-	\$3,359.00
IWP-60-30-CN	60,000	30'	NG*	JJ-060W-CN	TW-1430-JZ	-	\$3,717.00
IWP-80-20-CN	80,000	20'	NG*	JJ-080W-CN	TW-1420-JZ	-	\$3,359.00
IWP-80-30-CN	80,000	30'	NG*	JJ-080W-CN	TW-1430-JZ	-	\$3,717.00
IWP-80-40-CN	80,000	40'	NG*	JJ-080W-CN	TW-1040-JZ	-	\$4,130.00
IWP-110-30-CN	110,000	30'	NG*	JJ-110W-CN	TW-1430-JZ	-	\$3,717.00
IWP-110-30-CL	110,000	30'	LP**	JJ-110W-CL	TW-1430-JZ	-	\$3,717.00
IWP-110-40-CN	110,000	40'	NG*	JJ-110W-CN	TW-1040-JZ	-	\$4,130.00
IWP-110-40-CL	110,000	40'	LP**	JJ-110W-CL	TW-1040-JZ	-	\$4,130.00

IWP-110-50-CN	110,000	50'	NG*	JJ-110W-CN	TW-F030-JZ	TW-0020-JZ	\$4,673.00
IWP-110-50-CL	110,000	50'	LP**	JJ-110W-CL	TW-F030-JZ	TW-0020-JZ	\$4,673.00
IWP-130-30-CN	125,000	30'	NG Only	JJ-130W-CN	TW-1430-JZ	-	\$3,717.00
IWP-130-40-CN	125,000	40'	NG*	JJ-130W-CN	TW-1040-JZ	-	\$4,130.00
IWP-130-50-CN	125,000	50'	NG*	JJ-130W-CN	TW-F030-JZ	TW-0020-JZ	\$4,673.00
IWP-155-40-CN	150,000	40'	NG*	JJ-155W-CN	TW-1040-JZ	-	\$4,199.00
IWP-155-50-CN	150,000	50'	NG*	JJ-155W-CN	TW-F030-JZ	TW-0020-JZ	\$4,743.00
IWP-155-60-CN	150,000	60'	NG*	JJ-155W-CN	TW-F030-JZ	TW-0030-JZ	\$5,117.00
IWP-175-50-CL	175,000	50'	LP**	JJ-175W-CL	TW-1030-JZ	TW-0020-JZ	\$5,051.00
IWP-175-50-CN	175,000	50'	NG*	JJ-175W-CN	TW-1030-JZ	TW-0020-JZ	\$5,051.00
IWP-175-60-CL	175,000	60'	LP**	JJ-175W-CL	TW-1030-JZ	TW-0030-JZ	\$5,432.00
IWP-175-60-CN	175,000	60'	NG*	JJ-175W-CN	TW-1030-JZ	TW-0030-JZ	\$5,432.00
IWP-175-70-CN	175,000	70'	NG Only	JJ-175W-CN	TW-1030-JZ	TW-0040-JZ	\$5,818.00
IWP-200-50-CN	200,000	50'	NG Only	JJ-200W-CN	TW-1030-JZ	TW-0020-JZ	\$5,051.00
IWP-200-60-CL	200,000	60'	LP**	JJ-200W-CL	TW-1030-JZ	TW-0030-JZ	\$5,423.00
IWP-200-60-CN	200,000	60'	NG*	JJ-200W-CN	TW-1030-JZ	TW-0030-JZ	\$5,423.00
IWP-200-70-CL	200,000	70'	LP**	JJ-200W-CL	TW-1030-JZ	TW-0040-JZ	\$5,818.00
IWP-200-70-CN	200,000	70'	NG*	JJ-200W-CN	TW-1030-JZ	TW-0040-JZ	\$5,818.00

* Field conversion kits required for LP fuel; ** Burner can be ordered LP

Notes:

1. IWP-175 & IWP-200 are not suitable for patio applications

2. A Tube Heater System ships in 2 or 3 individual cartons with a Burner Kit + Tube Kit(s) required for heater length

3. Burner Kits, and tube kits are packaged separately and clearly labelled for ease of assembling orders and shipment

4. Above 4,500 ft Reduce Total System Length by 20 ft (Total System = Air Duct + Tube + Vent).

IWP Single-Stage Tube Kits

PART #	CAPACITY	MOUNTS TO TUBE LENGTHS	FUEL	FLEX GAS CONNECTOR	LIST PRICE
JJ-045W-CN	45,000 Btuh	20'	N.G.*	1/2" x 24"	\$2,230.00
JJ-060W-CN	60,000 Btuh	20', 30'	N.G.*	1/2" x 24"	\$2,230.00
JJ-080W-CN	80,000 Btuh	20', 30', 40'	N.G.*	1/2" x 24"	\$2,230.00
JJ-110W-CN	110,000 Btuh	30', 40', 50'	N.G.*	1/2" x 24"	\$2,230.00
JJ-110W-CL	110,000 Btuh	30', 40', 50'	L.P.**	1/2" x 24"	\$2,230.00
JJ-130W-CN	125,000 Btuh	30'	N.G. Only	1/2" x 24"	\$2,230.00
JJ-130W-CN	125,000 Btuh	40', 50'	N.G.*	1/2" x 24"	\$2,230.00
JJ-155W-CN	150,000 Btuh	40', 50', 60'	N.G.*	3/4" X 36"	\$2,298.00
JJ-175W-CN	175,000 Btuh	50', 60', 70'	N.G.* (70' is NG Only)	3/4" X 36"	\$2,356.00
JJ-175W-CL	175,000 Btuh	50', 60'	L.P.**	3/4" X 36"	\$2,356.00
JJ-200W-CN	200,000 Btuh	50', 60', 70'	N.G.* (50' is NG Only)	3/4" X 36"	\$2,356.00
JJ-200W-CL	200,000 Btuh	60', 70'	L.P.**	3/4" X 36"	\$2,356.00

IWP Single-Stage Tube Kits

Stand-Alone Tube Kits (do not require any additional Tube Kit)

TUBE KIT PART#	LENGTH	OUTPUT (Btuh)	DESCRIPTION	LIST PRICE
TW-1420-JZ	20'	45/60/80,000	Aluminized steel: Flanged tube + 1 emissive coated tube: Turbulators 4 ft + 8 ft	\$1,132.00
TW-1430-JZ	30'	60/80/110/125,000	Flanged aluminized steel tube + 2 emissive coated aluminized tubes: Turbulators 5 ft + 8 ft (5 ft turbulator removed in field for 60 & 80,000)	\$1,488.00
TW-1040-JZ	40'	80/110/125/150,000	Flanged Aluminized steel tube + 3 emissive coated aluminized tubes 2 ft + 10 ft	\$1,901.00

Primary Tube Kits (require a Secondary Kit to make 50', 60' & 70' heaters)

TUBE KIT PART#	LENGTH	OUTPUT (Btuh)	DESCRIPTION	LIST PRICE
TW-F030-JZ	30'	110/125/150,000	Aluminized steel: Flanged tube + 2 emissive coated tubes: No Turbulator	\$1,450.00
TW-1030-JZ	30'	175/200,000	Flanged stainless tube + 2 emissive coated aluminized tubes: Turbulator 10 ft	\$1,700.00

Secondary Tube Kits (needed for above Primary Kits to make 50', 60' & 70' heaters)

TUBE KIT PART#	LENGTH	DESCRIPTION	LIST PRICE
TW-0020-JZ	20'	Two emissive coated aluminized tubes (makes 50' heater with either 30' primary)	\$997.00
TW-0030-JZ	30'	Three emissive coated aluminized tubes (makes 60' heater with either 30' primary)	\$1,369.00
TW-0040-JZ	40'	Four emissive coated aluminized tubes (makes 70' heater with 30' primary TW-1030-JZ)	\$1,765.00
TW-1010-JZ	10'	One emissive coated aluminized tube, reflector, reflector braces, hanger, tube coupler. Do not use the 10 ft tube kit to extend heater length beyond the maximum length approved for any input.	\$618.00

IPW2 Two-Stage Series

ORDER BY KIT PART #	CAPACITY INPUT (Btuh)	TUBE LENGTH	FUEL	Burner Kit #	Tube Kit 1 #	Tube Kit 2 #	LIST PRICE
IWP2-80-30-CN	78/58,000	20'	NG*	JJ-TW08-CN	TW-1420-JZ	-	\$3533.00
IWP2-110-30-CN	78/58,000	30'	NG*	JJ-TW08-CN	TW-1430-JZ	-	\$3,890.00
IWP2-110-30-CL	110/80,000	30'	NG*	JJ-TW11-CN	TW-1430-JZ	-	\$3,890.00
IWP2-110-40-CN	108/70,000	30'	LP**	JJ-TW11-CL	TW-1430-JZ	-	\$3,890.00
IWP2-110-40-CL	108/70,000	40'	NG*	JJ-TW11-CN	TW-1040-JZ	-	\$4,303.00
IWP2-130-30-CN	108/70,000	40'	LP**	JJ-TW11-CL	TW-1040-JZ	-	\$4,303.00
IWP2-130-40-CN	120/85,000	30'	NG Only	JJ-TW13-CN	TW-1430-JZ	-	\$3,890.00
IWP2-155-40-CN	120/85,000	40'	NG*	JJ-TW13-CN	TW-1040-JZ	-	\$4,303.00
IWP2-155-50-CN	150/110,000	40'	NG*	JJ-TW15-CN	TW-1040-JZ	-	\$4,372.00
IWP2-175-50-CN	150/110,000	50'	NG*	JJ-TW15-CN	TW-F030-JZ	TW-0020-JZ	\$4,914.00
IWP2-175-60-CN	162/115,000	50'	NG Only	JJ-TW17-CN	TW-1030-JZ	TW-0020-JZ	\$5,222.00
IWP2-200-50-CN	162/115,000	60'	NG Only	JJ-TW17-CN	TW-1030-JZ	TW-0030-JZ	\$5,594.00
IWP2-200-60-CN	195/140,000	50'	NG Only	JJ-TW20-CN	TW-1030-JZ	TW-0020-JZ	\$5,222.00
IWP2-200-60-CN	195/140,000	60'	NG Only	JJ-TW20-CN	TW-1030-JZ	TW-0030-JZ	\$5,594.00

* Field conversion kits required for LP fuel; ** Burner can be ordered LP

Notes:

1. IWP2-175 & IWP2-200 are not suitable for patio applications
2. A Tube Heater System ships in 2 or 3 individual cartons with a Burner Kit + Tube Kit(s) required for heater length
3. Burner Kits, and tube kits are packaged separately and clearly labelled for ease of assembling orders and shipment
4. Above 4,500 ft Reduce Total System Length by 20 ft (Total System = Air Duct + Tube + Vent).

IWP2 Two-Stage Burner Kits

ORDER BY PART #	CAPACITY	MOUNTS TO TUBE LENGTHS	FUEL	FLEX GAS CONNECTOR	LIST PRICE
JJ-TW08-CN	78 / 58,000	20', 30'	N.G.*	1/2" x 24"	\$2,403.00
JJ-TW11-CN	110 / 80,000	30', 40'	N.G.*	1/2" x 24"	\$2,403.00
JJ-TW11-CL	108 / 70,000	30', 40'	L.P.**	1/2" x 24"	\$2,403.00
JJ-TW13-CN	120 / 85,000	30'	N.G. Only	1/2" x 24"	\$2,403.00
JJ-TW13-CN	120 / 85,000	40'	N.G.*	1/2" x 24"	\$2,403.00
JJ-TW15-CN	150 / 110,000	40', 50'	N.G.*	3/4" X 36"	\$2,472.00
JJ-TW17-CN	162 / 115,000	50', 60'	N.G. Only	3/4" X 36"	\$2,529.00
JJ-TW20-CN	195 / 140,000	50', 60'	N.G. Only	3/4" X 36"	\$2,529.00

IWP2 Two-Stage Tube Kits

Stand-Alone Tube Kits (do not require any additional Tube Kit)

TUBE KIT PART#	LENGTH	OUTPUT (Btuh)	DESCRIPTION	LIST PRICE
TW-1420-JZ	20'	45/60/80,000	Aluminized steel: Flanged tube + 1 emissive coated tube: Turbulators 4 ft + 8 ft	\$1,132.00
TW-1430-JZ	30'	60/80/110/125,000	Flanged aluminized steel tube + 2 emissive coated aluminized tubes: Turbulators 5 ft + 8 ft (5 ft turbulator removed in field for 60 & 80,000)	\$1,488.00
TW-1040-JZ	40'	80/110/125/150,000	Flanged Aluminized steel tube + 3 emissive coated aluminized tubes 2 ft + 10 ft	\$1,901.00

Primary Tube Kits (require a Secondary Kit to make 50', 60' & 70' heaters)

TUBE KIT PART#	LENGTH	OUTPUT (Btuh)	DESCRIPTION	LIST PRICE
TW-F030-JZ	30'	110/125/150,000	Aluminized steel: Flanged tube + 2 emissive coated tubes: No Turbulator	\$1,450.00
TW-1030-JZ	30'	175/200,000	Flanged stainless tube + 2 emissive coated aluminized tubes: Turbulator 10 ft	\$1,700.00

Secondary Tube Kits (needed for above Primary Kits to make 50', 60' & 70' heaters)

TUBE KIT PART#	LENGTH	DESCRIPTION	LIST PRICE
TW-0020-JZ	20'	Two emissive coated aluminized tubes (makes 50' heater with either 30' primary)	\$997.00
TW-0030-JZ	30'	Three emissive coated aluminized tubes (makes 60' heater with either 30' primary)	\$1,369.00
TW-0040-JZ	40'	Four emissive coated aluminized tubes (makes 70' heater with 30' primary TW-1030-JZ)	\$1,765.00
TW-1010-JZ	10'	One emissive coated aluminized tube, reflector, reflector braces, hanger, tube coupler. Do not use the 10 ft tube kit to extend heater length beyond the maximum length approved for any input.	\$618.00

IW/IW2 Series

Tough Harsh Environment Tube Heater

www.infrasave.com/products/iw-iwp-series/

→ Features

A preferred model for harsh environments applications like car and truck power washes. Available in single-stage and 2-stage models with a stainless steel weather tight burner cabinet and aluminized steel: reflectors and tubes.



BURNER KIT INCLUDES: Stainless steel housing, flexible gas connector, status indicator lights, electrical cord & plug, mounted igniter, birdscreen 4" diameter air intake adapter on blower.

ALL Tubes are Aluminized steel swaged, aluminized reflectors, end caps, hangers, tube couplers and turbulator.

- Fresh air adapter and cap for 'outside' combustion air
- Moisture resistant spark ignition package
- Tough, durable finish
- Whisper Quiet Ceramic Burner
- 24V or Line Voltage Thermostat Ready
- Birdscreened 4" Combustion Air Collar and Intake Wall Hood
- Flexible system configurations including straight, U-shaped, and L-shaped
- Focus Shield' Reflector & End Caps for Premier IR Heat Output

IW Single-Stage Series

ORDER BY KIT PART #	CAPACITY INPUT (Btuh)	TUBE LENGTH	FUEL	Burner Kit #	Tube Kit 1 #	Tube Kit 2 #	LIST PRICE
PU-W040-CN	40000	10'U	NG*				\$3,817.00
IW-45-20-CN	45000	20'	NG*	JJ-P045-CN	TW-1420-JZ	-	\$3,768.00
IW-60-20-CN	60000	20'	NG*	JJ-P060-CN	TW-1420-JZ	-	\$3,768.00
IW-60-30-CN	60000	30'	NG*	JJ-P060-CN	TW-1430-JZ	-	\$4,127.00
IW-80-20-CN	80000	20'	NG*	JJ-P080-CN	TW-1420-JZ	-	\$3,768.00
IW-80-30-CN	80000	30'	NG*	JJ-P080-CN	TW-1430-JZ	-	\$4,127.00
IW-80-40-CN	80000	40'	NG*	JJ-P080-CN	TW-1040-JZ	-	\$4,540.00
IW-110-30-CN	110000	30'	NG*	JJ-P110-CN	TW-1430-JZ	-	\$4,127.00
IW-110-30-CL	110000	30'	LP**	JJ-P110-CL	TW-1430-JZ	-	\$4,208.00
IW-110-40-CN	110000	40'	NG*	JJ-P110-CN	TW-1040-JZ	-	\$4,540.00
IW-110-40-CL	110000	40'	LP**	JJ-P110-CL	TW-1040-JZ	-	\$4,540.00
IW-110-50-CN	110000	50'	NG*	JJ-P110-CN	TW-F030-JZ	TW-0020-JZ	\$5,080.00

IW-110-50-CL	110000	50'	LP**	JJ-P110-CL	TW-F030-JZ	TW-0020-JZ	\$5,080.00
IW-130-30-CN	130000	30'	NG Only	JJ-P130-CN	TW-1430-JZ	-	\$4,127.00
IW-130-40-CN	130000	40'	NG*	JJ-P130-CN	TW-1040-JZ	-	\$4,540.00
IW-130-50-CN	130000	50'	NG*	JJ-P130-CN	TW-F030-JZ	TW-0020-JZ	\$5,080.00
IW-155-40-CN	150000	40'	NG*	JJ-P155-CN	TW-1040-JZ	-	\$4,588.00
IW-155-50-CN	150000	50'	NG*	JJ-P155-CN	TW-F030-JZ	TW-0020-JZ	\$5,132.00
IW-155-60-CN	150000	60'	NG*	JJ-P155-CN	TW-F030-JZ	TW-0030-JZ	\$5,504.00
IW-175-50-CL	175,000	50'	LP**	JJ-P175-CL	TW-1030-JZ	TW-0020-JZ	\$5,464.00
IW-175-50-CN	175,000	50'	NG*	JJ-P175-CN	TW-1030-JZ	TW-0020-JZ	\$5,464.00
IW-175-60-CL	175,000	60'	LP**	JJ-P175-CL	TW-1030-JZ	TW-0030-JZ	\$5,839.00
IW-175-60-CN	175,000	60'	NG*	JJ-P175-CN	TW-1030-JZ	TW-0030-JZ	\$5,839.00
IW-175-70-CN	175,000	70'	NG Only	JJ-P175-CN	TW-1030-JZ	TW-0040-JZ	\$6,231.00
IW-200-50-CN	200,000	50'	NG Only	JJ-P200-CN	TW-1030-JZ	TW-0020-JZ	\$5,464.00
IW-200-60-CL	200,000	60'	LP**	JJ-P200-CL	TW-1030-JZ	TW-0030-JZ	\$5,839.00
IW-200-60-CN	200,000	60'	NG*	JJ-P200-CN	TW-1030-JZ	TW-0030-JZ	\$5,839.00
IW-200-70-CL	200,000	70'	LP**	JJ-P200-CL	TW-1030-JZ	TW-0040-JZ	\$6,231.00
IW-200-70-CN	200,000	70'	NG*	JJ-P200-CN	TW-1030-JZ	TW-0040-JZ	\$6,231.00

* Field conversion kits required for LP fuel; ** Burner can be ordered LP

Notes:

1. IW-175 & IW-200 are not suitable for patio applications
2. A Tube Heater System ships in 2 or 3 individual cartons with a Burner Kit + Tube Kit(s) required for heater length
3. Burner Kits, and tube kits are packaged separately and clearly labelled for ease of assembling orders and shipment
4. Above 4,500 ft Reduce Total System Length by 20 ft (Total System = Air Duct + Tube + Vent).

IW Single-Stage Burner Kit

PART #	CAPACITY	MOUNTS TO TUBE LENGTHS	FUEL	FLEX GAS CONNECTOR	LIST PRICE
JJ-P045-CN	45,000 Btuh	20'	N.G.*	1/2" x 24"	\$2,636.00
JJ-P060-CN	60,000 Btuh	20', 30'	N.G.*	1/2" x 24"	\$2,636.00
JJ-P080-CN	80,000 Btuh	20', 30', 40'	N.G.*	1/2" x 24"	\$2,636.00
JJ-P110-CN	110,000 Btuh	30', 40', 50'	N.G.*	1/2" x 24"	\$2,636.00
JJ-P110-CL	110,000 Btuh	30', 40', 50'	L.P.**	1/2" x 24"	\$2,636.00
JJ-P130-CN	125,000 Btuh	30', 40', 50'	N.G.* (30' is NG Only)	1/2" x 24"	\$2,636.00
JJ-P155-CN	150,000 Btuh	40', 50', 60'	N.G.*	3/4" X 36"	\$2,687.00
JJ-P175-CN	175,000 Btuh	50', 60', 70'	N.G.* (70' is NG Only)	3/4" X 36"	\$2,768.00
JJ-P175-CL	175,000 Btuh	50', 60'	L.P.**	3/4" X 36"	\$2,768.00
JJ-P200-CN	200,000 Btuh	50', 60', 70'	N.G.* (50' is NG Only)	3/4" X 36"	\$2,768.00
JJ-P200-CL	200,000 Btuh	60', 70'	L.P.**	3/4" X 36"	\$2,768.00

IW Single-Stage Tube Kits

Stand-Alone Tube Kits (do not require any additional Tube Kit)

TUBE KIT PART#	LENGTH	OUTPUT (Btuh)	DESCRIPTION	LIST PRICE
TW-1420-JZ	20'	45/60/80,000	Aluminized steel: Flanged tube + 1 emissive coated tube: Turbulators 4 ft + 8 ft	\$1,132.00
TW-1430-JZ	30'	60/80/110/125,000	Flanged aluminized steel tube + 2 emissive coated aluminized tubes: Turbulators 5 ft + 8 ft (5 ft turbulator removed in field for 60 & 80,000)	\$1,488.00
TW-1040-JZ	40'	80/110/125/150,000	Flanged Aluminized steel tube + 3 emissive coated aluminized tubes Turbulators 2 ft + 10 ft	\$1,901.00

Primary Tube Kits (require a Secondary Kit to make 50', 60' & 70' heaters)

TUBE KIT PART#	LENGTH	OUTPUT (Btuh)	DESCRIPTION	LIST PRICE
TW-F030-JZ	30'	110/125/150,000	Aluminized steel: Flanged tube + 2 emissive coated tubes: No Turbulator	\$1,450.00
TW-1030-JZ	30'	175/200,000	Flanged stainless tube + 2 emissive coated aluminized tubes: Turbulator 10 ft	\$1,700.00

Secondary Tube Kits (needed for above Primary Kits to make 50', 60' & 70' heaters)

TUBE KIT PART#	LENGTH	DESCRIPTION	LIST PRICE
TW-0020-JZ	20'	Two emissive coated aluminized tubes (makes 50' heater with either 30' primary)	\$997.00
TW-0030-JZ	30'	Three emissive coated aluminized tubes (makes 60' heater with either 30' primary)	\$1,369.00
TW-0040-JZ	40'	Four emissive coated aluminized tubes (makes 70' heater with 30' primary TW-1030-JZ)	\$1,765.00
TW-1010-JZ	10'	One emissive coated aluminized tube, reflector, reflector braces, hanger, tube coupler. Do not use the 10 ft tube kit to extend heater length beyond the maximum length approved for any input.	\$618.00

IW2 Two-Stage Series

ORDER BY KIT PART #	CAPACITY INPUT (Btuh)	TUBE LENGTH	FUEL	Burner Kit #	Tube Kit 1 #	Tube Kit 2 #	LIST PRICE
IW2-80-20-CN	78/58,000	20'	NG*	JJ-TP08-CN	TW-1420-JZ	-	\$3,940.00
IW2-80-30-CN	78/58,000	30'	NG*	JJ-TP08-CN	TW-1430-JZ	-	\$4,298.00
IW2-110-30-CN	110/80,000	30'	NG*	JJ-TP11-CN	TW-1430-JZ	-	\$4,298.00
IW2-110-30-CL	108/70,000	30'	LP**	JJ-TP11-CL	TW-1430-JZ	-	\$4,298.00
IW2-110-40-CN	108/70,000	40'	NG*	JJ-TP11-CN	TW-1040-JZ	-	\$4,712.00
IW2-110-40-CL	108/70,000	40'	LP**	JJ-TP11-CL	TW-1040-JZ	-	\$4,712.00
IW2-130-30-CN	130/90,000	30'	NG Only	JJ-TP13-CN	TW-1430-JZ	-	\$4,298.00
IW2-130-40-CN	130/90,000	40'	NG*	JJ-TP13-CN	TW-1040-JZ	-	\$4,712.00
IW2-155-40-CN	150/110,000	40'	NG*	JJ-TP15-CN	TW-1040-JZ	-	\$4,760.00
IW2-155-50-CN	150/110,000	50'	NG*	JJ-TP15-CN	TW-F030-JZ	TW-0020-JZ	\$5,302.00
IW2-175-50-CN	162/115,000	50'	NG Only	JJ-TP17-CN	TW-1030-JZ	TW-0020-JZ	\$5,634.00
IW2-175-60-CN	162/115,000	60'	NG Only	JJ-TP17-CN	TW-1030-JZ	TW-0030-JZ	\$6,008.00
IW2-200-50-CN	195/140,000	50'	NG Only	JJ-TP20-CN	TW-1030-JZ	TW-0020-JZ	\$5,634.00
IW2-200-60-CN	195/140,000	60'	NG Only	JJ-TP20-CN	TW-1030-JZ	TW-0030-JZ	\$6,008.00

* Field conversion kits required for LP fuel; ** Burner can be ordered LP

Notes:

1. IW2-175 & IW2-200 are not suitable for patio applications
2. A Tube Heater System ships in 2 or 3 individual cartons with a Burner Kit + Tube Kit(s) required for heater length
3. Burner Kits, and tube kits are packaged separately and clearly labelled for ease of assembling orders and shipment
4. Above 4,500 ft Reduce Total System Length by 20 ft (Total System = Air Duct + Tube + Vent).

IW2 Burner Kit

PART #	CAPACITY	MOUNTS TO TUBE LENGTHS	FUEL	FLEX GAS CONNECTOR	LIST PRICE
JJ-TP08-CN	78 / 58,000	20', 30'	N.G.*	1/2" x 24"	\$2,809.00
JJ-TP11-CN	110 / 80,000	30', 40'	N.G.*	1/2" x 24"	\$2,809.00
JJ-TP11-CL	108 / 70,000	30', 40'	L.P.**	1/2" x 24"	\$2,809.00
JJ-TP13-CN	120 / 85,000	30'	N.G. Only	1/2" x 24"	\$2,809.00
JJ-TP13-CN	120 / 85,000	40'	N.G.*	1/2" x 24"	\$2,809.00
JJ-TP15-CN	150 / 110,000	40', 50'	N.G.*	3/4" X 36"	\$2,862.00
JJ-TP17-CN	162 / 115,000	50', 60'	N.G. Only	3/4" X 36"	\$3,136.00
JJ-TP20-CN	195 / 140,000	50', 60'	N.G. Only	3/4" X 36"	\$3,136.00

IW2 Two-Stage Tube Kit

Stand-Alone Tube Kits (do not require any additional Tube Kit)

TUBE KIT PART#	LENGTH	OUTPUT (Btuh)	DESCRIPTION	LIST PRICE
TW-1420-JZ	20'	45/60/80,000	Aluminized steel: Flanged tube + 1 emissive coated tube: Turbulators 4 ft + 8 ft	\$1,132.00
TW-1430-JZ	30'	60/80/110/125,000	Flanged aluminized steel tube + 2 emissive coated aluminized tubes: Turbulators 5 ft + 8 ft (5 ft turbulator removed in field for 60 & 80,000)	\$1,488.00
TW-1040-JZ	40'	80/110/125/150,000	Flanged Aluminized steel tube + 3 emissive coated aluminized tubes Turbulators 2 ft + 10 ft	\$1,901.00

Primary Tube Kits (require a Secondary Kit to make 50', 60' & 70' heaters)

TUBE KIT PART#	LENGTH	OUTPUT (Btuh)	DESCRIPTION	LIST PRICE
TW-F030-JZ	30'	110/125/150,000	Aluminized steel: Flanged tube + 2 emissive coated tubes: No Turbulator	\$1,450.00
TW-1030-JZ	30'	175/200,000	Flanged stainless tube + 2 emissive coated aluminized tubes: Turbulator 10 ft	\$1,700.00

Secondary Tube Kits (needed for above Primary Kits to make 50', 60' & 70' heaters)

TUBE KIT PART#	LENGTH	DESCRIPTION	LIST PRICE
TW-0020-JZ	20'	Two emissive coated aluminized tubes (makes 50' heater with either 30' primary)	\$997.00
TW-0030-JZ	30'	Three emissive coated aluminized tubes (makes 60' heater with either 30' primary)	\$1,369.00
TW-0040-JZ	40'	Four emissive coated aluminized tubes (makes 70' heater with 30' primary TW-1030-JZ)	\$1,765.00
TW-1010-JZ	10'	One emissive coated aluminized tube, reflector, reflector braces, hanger, tube coupler. Do not use the 10 ft tube kit to extend heater length beyond the maximum length approved for any input.	\$618.00

Notes:

1. Can be ordered individually
2. Include Stainless Swaged Tubes, Stainless Reflectors, End Caps, Hangers, Tube Couplers and Turbulator as required

IWS/IWS2 Series

Complete Stainless-Steel Wet Environment Tube Heater

www.infrasave.com/products/iw-iwp-series/

→ Features

A preferred model where a complete stainless steel model is required - in highly corrosive or food service applications. Available in single-stage and 2-stage models with a stainless steel weather tight cabinet and stainless steel: reflectors and tubes. Also a great option for wash bays and damp environments



BURNER KIT INCLUDES: Stainless steel housing, flexible gas connector, status indicator lights, electrical cord & plug, mounted igniter, birdscreen 4" diameter air intake adapter on blower.

ALL Tubes are Stainless steel swaged, Stainless steel tubes, Stainless steel reflectors, end caps, hangers, couplers and turbulator.

- Fresh air adapter and cap for 'outside' combustion air
- Moisture resistant spark ignition package
- Tough, durable finish
- Whisper Quiet Ceramic Burner
- 24V or Line Voltage Thermostat Ready
- Flexible system configurations including straight, U-shaped, and L-shaped
- Focus Shield' Reflector & End Caps for Premier IR Heat Output
- Emissive Coated Radiant Tubes
- Warranty includes; 10-year tube, 10-year burner cup, 3-year components

IWS Single-Stage Series

ORDER BY KIT PART #	CAPACITY INPUT (Btuh)	TUBE LENGTH	FUEL	Burner Kit #	Tube Kit 1 #	Tube Kit 2 #	LIST PRICE
IWS-45-20-CN	45,000	20'	NG*	JJ-P045-CN	TW-1420-JZ-2	-	\$5,111.00
IWS-60-30-CN	60,000	30'	NG*	JJ-P060-CN	TW-1430-JZ-2	-	\$6,088.00
IWS-80-30-CN	80,000	30'	NG*	JJ-P080-CN	TW-1430-JZ-2	-	\$6,088.00
IWS-80-40-CN	80,000	40'	NG*	JJ-P080-CN	TW-1040-JZ-2	-	\$7,067.00
IWS-110-40-CN	110,000	40'	NG*	JJ-P110-CN	TW-1040-JZ-2	-	\$7,067.00
IWS-110-40-CL	110,000	40'	LP**	JJ-P110-CL	TW-1040-JZ-2	-	\$7,067.00
IWS-110-50-CN	110,000	50'	NG*	JJ-P110-CN	TW-F030-JZ-2	TW-0020-JZ-2	\$8,359.00
IWS-110-50-CL	110,000	50'	LP**	JJ-P110-CL	TW-F030-JZ-2	TW-0020-JZ-2	\$8,359.00
IWS-130-40-CN	125,000	40'	NG*	JJ-P130-CN	TW-1040-JZ-2	-	\$7,067.00

IWS-130-50-CN	125,000	50'	NG*	JJ-P130-CN	TW-F030-JZ-2	TW-0020-JZ-2	\$8,359.00
IWS-155-50-CN	150,000	50'	NG*	JJ-P155-CN	TW-F030-JZ-2	TW-0020-JZ-2	\$8,405.00
IWS-155-60-CN	150,000	60'	NG*	JJ-P155-CN	TW-F030-JZ-2	TW-0030-JZ-2	\$9,386.00
IWS-175-60-CL	175,000	60'	LP**	JJ-P175-CL	TW-1030-JZ-2	TW-0030-JZ-2	\$9,464.00
IWS-175-60-CN	175,000	60'	NG*	JJ-P175-CN	TW-1030-JZ-2	TW-0030-JZ-2	\$9,464.00
IWS-175-70-CN	175,000	70'	NG* Only	JJ-P175-CN	TW-1030-JZ-2	TW-0040-JZ-2	\$10,444.00
IWS-200-60-CL	200,000	60'	LP**	JJ-P200-CL	TW-1030-JZ-2	TW-0030-JZ-2	\$9,464.00
IWS-200-60-CN	200,000	60'	NG*	JJ-P200-CN	TW-1030-JZ-2	TW-0030-JZ-2	\$9,464.00
IWS-200-70-CL	200,000	70'	LP**	JJ-P200-CL	TW-1030-JZ-2	TW-0040-JZ-2	\$10,444.00
IWS-200-70-CN	200,000	70'	NG*	JJ-P200-CN	TW-1030-JZ-2	TW-0040-JZ-2	\$10,444.00

* Field conversion kits required for LP fuel; ** Burner can be ordered LP

Notes:

1. IWS-175 & IWS-200 are not suitable for patio applications
2. A Tube Heater System ships in 2 or 3 individual cartons with a Burner Kit + Tube Kit(s) required for heater length
3. Burner Kits, and tube kits are packaged separately and clearly labelled for ease of assembling orders and shipment
4. Above 4,500 ft Reduce Total System Length by 20 ft (Total System = Air Duct + Tube + Vent).

IWS Single-Stage Burner Kit

PART #	CAPACITY	MOUNTS TO TUBE LENGTHS	FUEL	FLEX GAS CONNECTOR	LIST PRICE
JJ-P045-CN	45,000	20'	N.G.*	1/2" x 24"	\$2,636.00
JJ-P060-CN	60,000	30'	N.G.*	1/2" x 24"	\$2,636.00
JJ-P080-CN	80,000	30', 40'	N.G.*	1/2" x 24"	\$2,636.00
JJ-P110-CN	110,000	40', 50'	N.G.*	1/2" x 24"	\$2,636.00
JJ-P110-CL	110,000	40', 50'	L.P.**	1/2" x 24"	\$2,636.00
JJ-P130-CN	125,000	40', 50'	N.G.*	1/2" x 24"	\$2,636.00
JJ-P155-CN	150,000	50', 60'	N.G.*	3/4" X 36"	\$2,687.00
JJ-P175-CN	175,000	60', 70'	N.G.* (70' is NG Only)	3/4" X 36"	\$2,768.00
JJ-P175-CL	175,000	60'	L.P.**	3/4" X 36"	\$2,768.00
JJ-P200-CN	200,000	60', 70'	N.G.*	3/4" X 36"	\$2,768.00
JJ-P200-CL	200,000	60', 70'	L.P.**	3/4" X 36"	\$2,768.00

IWS Single-Stage Tube Kits

Stand-Alone Tube Kits (do not require any additional Tube Kit)

TUBE KIT PART#	LENGTH	OUTPUT (Btuh)	DESCRIPTION	LIST PRICE
TW-1420-JZ-2	20'	45,000	Stainless steel Flanged tube + 1 stainless steel tube: Turbulators 4 ft + 8 ft	\$2,598.00
TW-1430-JZ-2	30'	60/80,000	Stainless steel Flanged tube + 2 stainless steel tubes: Turbulator 8 ft	\$3,579.00
TW-1040-JZ-2	40'	80/110/125,000	Stainless steel Flanged tube + 3 stainless steel tubes: Turbulators 2 ft + 10 ft	\$4,557.00

Primary Tube Kits (require a Secondary Kit to make 50', 60' & 70' heaters)

TUBE KIT PART#	LENGTH	OUTPUT (Btuh)	DESCRIPTION	LIST PRICE
TW-F030-JZ-2	30'	110/125/150,000	Stainless steel Flanged tube + 2 stainless steel tubes: No Turbulator	\$3,579.00
TW-1030-JZ-2	30'	175/200,000	Stainless steel Flanged tube + 2 stainless steel tubes: Turbulator 10 ft	\$3,579.00

Secondary Tube Kits (needed for above Primary Kits to make 50', 60' & 70' heaters)

TUBE KIT PART#	LENGTH	DESCRIPTION	LIST PRICE
TW-0020-JZ-2	20'	Two stainless steel tubes (makes 50' heater with TW-F030-JZ-2 primary) 50 ft systems for inputs 110,000, 125,000, & 150,000 only	\$2,271.00
TW-0030-JZ-2	30'	Three stainless steel tubes (makes 60' heater with either 30' primary)	\$3,249.00
TW-0040-JZ-2	40'	Four stainless steel tubes (makes 70' heater with 30' primary TW-1030-JZ)	\$4,229.00
TW-1010-JZ-2	10'	One stainless steel tube, reflector, reflector braces, hanger, tube coupler Do not use the 10 ft tube kit to extend heater length beyond the maximum length approved for any input.	\$1,291.00

IWS2 Two-Stage Series**ORDER BY KIT**

PART #	CAPACITY INPUT (Btuh)	TUBE	FUEL	Burner Kit #	Tube Kit 1 #	Tube Kit 2 #	LIST PRICE
IW2S-80-30-CN	78/58,000	30'	NG*	JS-TP08-CN	TW-1430-JZ-2	-	\$6,354.00
IW2S-110-40-CN	110/80,000	40'	NG*	JS-TP11-CN	TW-1040-JZ-2	-	\$7,231.00
IW2S-110-40-CL	108/70,000	40'	LP**	JS-TP11-CL	TW-1040-JZ-2	-	\$7,231.00
IW2S-130-40-CN	130/90,000	40'	NG*	JS-TP13-CN	TW-1040-JZ-2	-	\$7,231.00
IW2S-155-50-CN	150/110,000	50'	NG*	JS-TP15-CN	TW-F030-JZ-2	TW-0020-JZ-2	\$8,570.00
IW2S-175-60-CN	162/115,000	60'	NG Only	JS-TP17-CN	TW-1030-JZ-2	TW-0030-JZ-2	\$9,626.00
IW2S-200-60-CN	195/140,000	60'	NG Only	JS-TP20-CN	TW-1030-JZ-2	TW-0030-JZ-2	\$9,626.00

* Field conversion kits required for LP fuel; ** Burner can be ordered LP

Notes:

1. IWS2-175 & IWS2-200 are not suitable for patio applications
2. A Tube Heater System ships in 2 or 3 individual cartons with a Burner Kit + Tube Kit(s) required for heater length
3. Burner Kits, and tube kits are packaged separately and clearly labelled for ease of assembling orders and shipment
4. Above 4,500 ft Reduce Total System Length by 20 ft (Total System = Air Duct + Tube + Vent).

IWS2 Two-Stage Burner Kit

PART #	CAPACITY	MOUNTS TO TUBE LENGTHS	FUEL	FLEX GAS CONNECTOR	LIST PRICE
JJ-TP08-CN	78 / 58,000	30'	N.G.*	1/2" x 24"	\$2,809.00
JJ-TP11-CN	110 / 80,000	40'	N.G.*	1/2" x 24"	\$2,809.00
JJ-TP11-CL	108 / 70,000	40'	L.P.**	1/2" x 24"	\$2,809.00
JJ-TP13-CN	120 / 85,000	40'	N.G.*	1/2" x 24"	\$2,809.00
JJ-TP15-CN	150 / 110,000	50'	N.G.*	3/4" X 36"	\$2,862.00
JJ-TP17-CN	162 / 115,000	60'	N.G. Only	3/4" X 36"	\$3,136.00
JJ-TP20-CN	195 / 140,000	60'	N.G. Only	3/4" X 36"	\$3,136.00

IWS2 Two-Stage Tube Kits

Stand-Alone Tube Kits (do not require any additional Tube Kit)

TUBE KIT PART#	LENGTH	OUTPUT (Btuh)	DESCRIPTION	LIST PRICE
TW-1420-JZ-2	20'	45,000	Stainless steel Flanged tube + 1 stainless steel tube: Turbulators 4 ft + 8 ft	\$2,598.00
TW-1430-JZ-2	30'	60/80,000	Stainless steel Flanged tube + 2 stainless steel tubes: Turbulator 8 ft	\$3,579.00
TW-1040-JZ-2	40'	80/110/125,000	Stainless steel Flanged tube + 3 stainless steel tubes: Turbulators 2 ft + 10 ft	\$4,557.00

Primary Tube Kits (require a Secondary Kit to make 50', 60' & 70' heaters)

TUBE KIT PART#	LENGTH	OUTPUT (Btuh)	DESCRIPTION	LIST PRICE
TW-F030-JZ-2	30'	110/125/150,000	Stainless steel Flanged tube + 2 stainless steel tubes: No Turbulator	\$3,579.00
TW-1030-JZ-2	30'	175/200,000	Stainless steel Flanged tube + 2 stainless steel tubes: Turbulator 10 ft	\$3,579.00

Secondary Tube Kits (needed for above Primary Kits to make 50', 60' & 70' heaters)

TUBE KIT PART#	LENGTH	DESCRIPTION	LIST PRICE
TW-0020-JZ-2	20'	Two stainless steel tubes (makes 50' heater with TW-F030-JZ-2 primary) 50 ft systems for inputs 110,000, 125,000, & 150,000 only	\$2,271.00
TW-0030-JZ-2	30'	Three stainless steel tubes (makes 60' heater with either 30' primary)	\$3,249.00
TW-0040-JZ-2	40'	Four stainless steel tubes (makes 70' heater with 30' primary TW-1030-JZ)	\$4,229.00
TW-1010-JZ-2	10'	One stainless steel tube, reflector, reflector braces, hanger, tube coupler Do not use the 10 ft tube kit to extend heater length beyond the maximum length approved for any input.	\$1,291.00

IQ Series

Straight Emissive Coated Tube Heater

www.infrasave.com/products/iq-series/

→ Features

Designed for indoor commercial and industrial applications and can be utilized in sports complexes, arenas, and other such applications that require efficient infrared radiant heating.



- Available in single-stage
- Status indicator lights
- Aluminized steel and emissive coated radiant tubes
- Swing-down cabinet service access
- Line voltage and 24-volt thermostat ready
- All burner assemblies operate on 120V power cord with plug
- Birdscreened Combustion Air Collar - 4" to allow for sealed combustion
- Focus shield' reflector and end caps for premier IR heat output
- Flexible gas connector included, and factory mounted igniter
- Warranty includes; 10-year tube, 10-year burner cup, 3-year components

IQ Series Tube Heaters

ORDER BY KIT PART #	CAPACITY INPUT (Btuh)	TUBE LENGTH	FUEL	Burner Kit #	Tube Kit 1 #	Tube Kit 2 #	LIST PRICE
PU-0J40-CN	40,000	10'U	NG*				\$2,702.00
IQ-45-20-CN	45,000	20'	NG*	JJ-S045-CN	TS-1420-JZ	-	\$2,597.00
IQ-60-20-CN	60,000	20'	NG*	JJ-S060-CN	TS-1420-JZ	-	\$2,597.00
IQ-60-30-CN	60,000	30'	NG*	JJ-S060-CN	TS-1430-JZ	-	\$2,954.00
IQ-80-20-CN	80,000	20'	NG*	JJ-S080-CN	TS-1420-JZ	-	\$2,597.00
IQ-80-30-CN	80,000	30'	NG*	JJ-S080-CN	TS-1430-JZ	-	\$2,954.00
IQ-80-40-CN	80,000	40'	NG*	JJ-S080-CN	TS-1040-JZ	-	\$3,309.00
IQ-100-20-CN	100,000	20'	NG Only	JJ-S100-CN	TS-1020-JZ	-	\$2,766.00
IQ-110-30-CL	110,000	30'	LP **	JJ-S110-CL	TS-1430-JZ	-	\$2,954.00
IQ-110-30-CN	110,000	30'	NG*	JJ-S110-CN	TS-1430-JZ	-	\$2,954.00
IQ-110-40-CL	110,000	40'	LP **	JJ-S110-CL	TS-1040-JZ	-	\$3,309.00
IQ-110-40-CN	110,000	40'	NG*	JJ-S110-CN	TS-1040-JZ	-	\$3,309.00
IQ-110-50-CL	110,000	50'	LP **	JJ-S110-CL	TS-F030-JZ	TS-0020-JZ	\$3,817.00
IQ-110-50-CN	110,000	50'	NG*	JJ-S110-CN	TS-F030-JZ	TS-0020-JZ	\$3,817.00
IQ-130-30-CN	125,000	30'	NG ONLY	JJ-S130-CN	TS-1430-JZ	-	\$2,954.00
IQ-130-40-CN	125,000	40'	NG*	JJ-S130-CN	TS-1040-JZ	-	\$3,309.00

IQ Series

IQ-130-50-CN	125,000	50'	NG*	JJ-S130-CN	TS-F030-JZ	TS-0020-JZ	\$3,817.00
IQ-155-40-CN	150,000	40'	NG*	JJ-S155-CN	TS-1040-JZ	-	\$3,366.00
IQ-155-50-CN	150,000	50'	NG*	JJ-S155-CN	TS-F030-JZ	TS-0020-JZ	\$3,876.00
IQ-155-60-CN	150,000	60'	NG*	JJ-S155-CN	TS-F030-JZ	TS-0030-JZ	\$4,231.00
IQ-175-50-CL	175,000	50'	LP **	JJ-S175-CL	TS-1030-JZ	TS-0020-JZ	\$4,093.00
IQ-175-50-CN	175,000	50'	NG*	JJ-S175-CN	TS-1030-JZ	TS-0020-JZ	\$4,093.00
IQ-175-60-CL	175,000	60'	LP **	JJ-S175-CL	TS-1030-JZ	TS-0030-JZ	\$4,448.00
IQ-175-60-CN	175,000	60'	NG*	JJ-S175-CN	TS-1030-JZ	TS-0030-JZ	\$4,448.00
IQ-175-70-CN	175,000	70'	NG Only	JJ-S175-CN	TS-1030-JZ	TS-0040-JZ	\$4,802.00
IQ-200-50-CN	200,000	50'	NG Only	JJ-S200-CN	TS-1030-JZ	TS-0020-JZ	\$4,093.00
IQ-200-60-CL	200,000	60'	LP **	JJ-S200-CL	TS-1030-JZ	TS-0030-JZ	\$4,448.00
IQ-200-60-CN	200,000	60'	NG*	JJ-S200-CN	TS-1030-JZ	TS-0030-JZ	\$4,448.00
IQ-200-70-CL	200,000	70'	LP **	JJ-S200-CL	TS-1030-JZ	TS-0040-JZ	\$4,802.00
IQ-200-70-CN	200,000	70'	NG*	JJ-S200-CN	TS-1030-JZ	TS-0040-JZ	\$4,802.00

* Field conversion kits required for LP fuel are listed in the accessories section; ** Burner can be ordered LP

Notes:

1. Tube Heater System ships in 2 or 3 cartons with Burner Kit + required Tube Kit(s) for heater length
2. HIGH ALTITUDE APPLICATION: Above 4,500 ft Reduce Total System Length by 20 ft (Total System = Air Duct + Tube + Vent).
3. Refer to manual for model details and orifice chart.
4. Burner Kits, and tube kits are packaged separately and clearly labelled for ease of assembling orders and shipment
5. Plate hangers require 9'-8" o.c. positioning
6. Suspend with chain, cable, or threaded rod; Suspension points: 2 last tube + 1 other tubes; 50 ft heater has 6 suspension points

IQ Burner Kits

ORDER BY PART #	CAPACITY	MOUNTS TO TUBE LENGTHS	FUEL	FLEX GAS CONNECTOR	LIST PRICE
JJ-S045-CN	45,000 Btuh	20'	N.G.*	1/2" x 24"	\$1,563.00
JJ-S060-CN	60,000 Btuh	20', 30'	N.G.*	1/2" x 24"	\$1,563.00
JJ-S080-CN	80,000 Btuh	20', 30', 40'	N.G.*	1/2" x 24"	\$1,563.00
JJ-S100-CN	100,000 Btuh	20' special	N.G. Only	1/2" x 24"	\$1,563.00
JJ-S110-CN	110,000 Btuh	30', 40', 50'	N.G.*	1/2" x 24"	\$1,563.00
JJ-S110-CL	110,000 Btuh	30', 40', 50'	LP **	1/2" x 24"	\$1,563.00
JJ-S130-CN	125,000 Btuh	30'	NG** (30' in NG Only)	1/2" x 24"	\$1,563.00
JJ-S130-CN	125,000 Btuh	40', 50'	N.G.* (40' & 50' for NG or LP)	1/2" x 24"	\$1,563.00
JJ-S155-CN	150,000 Btuh	40', 50', 60'	N.G.*	3/4" X 36"	\$1,621.00
JJ-S175-CN	175,000 Btuh	50', 60', 70'	N.G.* (70' is NG Only)	3/4" X 36"	\$1,677.00
JJ-S175-CL	175,000 Btuh	50', 60'	L.P.** (70' not available for LP)	3/4" X 36"	\$1,677.00
JJ-S200-CN	200,000 Btuh	50', 60', 70'	N.G.*	3/4" X 36"	\$1,677.00
JJ-S200-CL	200,000 Btuh	LP: 60', 70'	L.P.** (50' not available for LP)	3/4" X 36"	\$1,677.00

* Field conversion kits required for LP fuel are listed in the accessories section; ** Burner can be ordered LP

Notes:

1. Burner kits can be ordered individually
2. Burner kit includes: flexible gas connector, status indicator lights, electrical cord & plug, mounted igniter, birdscreened 4" diameter air intake adapter on blower.
3. All burner assemblies operate on line voltage (120VAC), but are factory ready for 24Vac Thermostat control

IQ Tube Kits

Stand-Alone Tube Kits (do not require any additional Tube Kit)

ORDER BY PART #	LENGTH	OUTPUT	DESCRIPTION	LIST PRICE
TS-1420-JZ	20'	45/60/80,000	Flanged aluminized tube + 1 emissive coated steel tube: Turbulators 4 ft + 8 ft	\$1,035.00
TS-1020-JZ	20'	100,000 ONLY	Flanged aluminized tube + 1 emissive coated steel tube: Turbulator Special 8 ft	\$1,205.00
TS-1430-JZ	30'	60/80/110/125,000	Flanged aluminized tube + 1 aluminized tube + 1 emissive coated steel tube: Turbulators 5 ft + 8 ft (5 ft turbulator removed in field for 60 & 80,000)	\$1,392.00
TS-1040-JZ	40'	80/110/125/150,000	Flanged aluminized tube + 1 aluminized tube + 2 emissive coated steel tubes: Turbulators 2 ft + 10 ft	\$1,746.00

Primary Tube Kits (require a Secondary Kit that assembles to create 50', 60' & 70' heaters)

TUBE KIT #	LENGTH	OUTPUT	DESCRIPTION	LIST PRICE
TS-F030-JZ	30'	110/125/150,000	Flanged aluminized tube + 1 aluminized tube + 1 emissive coated steel tube Turbulator 2 ft	\$1,372.00
TS-1030-JZ	30'	175/200,000	Flanged stainless steel tube + 1 aluminized tube + 1 emissive coated steel tube: Turbulators 4 ft + 6 ft (4 ft turbulator removed in field for 200,000 x 60 ft & 70 ft)	\$1,533.00

Secondary Tube Kits (needed with above Primary Kits to make 50', 60' & 70' heaters)

TUBE KIT #	LENGTH	DESCRIPTION	LIST PRICE
TS-0020-JZ	20'	Two emissive coated steel tubes (makes 50' heater with either 30' primary)	\$883.00
TS-0030-JZ	30'	Three emissive coated steel tubes (makes 60' heater with either 30' primary)	\$1,241.00
TS-0040-JZ	40'	Four emissive coated steel tubes (makes 70' heater with 30' primary TS-1030-JZ)	\$1,596.00
TS-1010-JZ	10'	One emissive coated steel tube, reflector, hanger, reflector braces, coupler	\$586.00

Notes: Tube Kits include Swaged Tubes, Reflectors, End Caps, Hangers, Tube Couplers and Turbulators as required

ITB/ITT Series

Single Straight Tube Heater

www.infrasave.com/products/itb-series

→ Features

The ITB/ITT economical radiant tube heater is ideal for indoor commercial and industrial applications. This entry model, standard efficiency shares many of the same features with the IQ model.



- Available in single-stage and two-stage
- All burner assemblies powered by hard wired 120V line voltage
- Wire hangers allow flexible positioning along the system
- 10' - 70' heater lengths
- 45,000 – 200,000 input BTU/HR models
- Birdscreened Combustion Air Collar - 4" to allow for sealed combustion
- Flexible gas connector included
- Warranty includes; 5-year tube, 5-year burner cup, 2-year components

ITB Series Tube Heaters

ORDER BY KIT PART #	CAPACITY INPUT (Btuh)	TUBE LENGTH	FUEL	Burner Kit #	Tube Kit 1 #	Tube Kit 2 #	LIST PRICE
PU-0J40-CN	40,000	10' U	NG*				\$2,702.00
ITB-45-20-CN	45,000	20'	NG*	JJ-E045-CN	TM-1420-SX	-	\$2,268.00
ITB-60-20-CN	60,000	20'	NG*	JJ-E060-CN	TM-1420-SX	-	\$2,268.00
ITB-60-30-CN	60,000	30'	NG*	JJ-E060-CN	TM-1430-SX	-	\$2,524.00
ITB-80-20-CN	80,000	20'	NG*	JJ-E080-CN	TM-1420-SX	-	\$2,268.00
ITB-80-30-CN	80,000	30'	NG*	JJ-E080-CN	TM-1430-SX	-	\$2,524.00
ITB-80-40-CN	80,000	40'	NG*	JJ-E080-CN	TM-1040-SX	-	\$2,776.00
ITB-100-20-CN	100,000	20'	NG Only	JJ-E100-CN	TM-1020-SX	-	\$2,524.00
ITB-110-30-CL	110,000	30'	LP **	JJ-E110-CL	TM-1430-SX	-	\$2,524.00
ITB-110-30-CN	110,000	30'	NG*	JJ-E110-CN	TM-1430-SX	-	\$2,524.00
ITB-110-40-CL	110,000	40'	LP **	JJ-E110-CL	TM-1040-SX	-	\$2,776.00
ITB-110-40-CN	110,000	40'	NG*	JJ-E110-CN	TM-1040-SX	-	\$2,776.00
ITB-110-50-CL	110,000	50'	LP **	JJ-E110-CL	TM-F030-SX	TM-0020-SX	\$3,225.00
ITB-110-50-CN	110,000	50'	NG	JJ-E110-CN	TM-F030-SX	TM-0020-SX	\$3,225.00
ITB-130-30-CN	125,000	30'	NG Only	JJ-E130-CN	TM-1430-SX	-	\$2,524.00

ITB-130-40-CN	125,000	40'	NG*	JJ-E130-CN	TM-1040-SX	-	\$2,776.00
ITB-130-50-CN	125,000	50'	NG*	JJ-E130-CN	TM-F030-SX	TM-0020-SX	\$3,225.00
ITB-155-40-CN	150,000	40'	NG*	JJ-E155-CN	TM-1040-SX	-	\$2,833.00
ITB-155-50-CN	150,000	50'	NG*	JJ-E155-CN	TM-F030-SX	TM-0020-SX	\$3,282.00
ITB-155-60-CN	150,000	60'	NG*	JJ-E155-CN	TM-F030-SX	TM-0030-SX	\$3,555.00
ITB-175-50-CL	175,000	50'	LP **	JJ-E175-CL	TM-1030-SX	TM-0020-SX	\$3,562.00
ITB-175-50-CN	175,000	50'	NG*	JJ-E175-CN	TM-1030-SX	TM-0020-SX	\$3,562.00
ITB-175-60-CL	175,000	60'	LP **	JJ-E175-CL	TM-1030-SX	TM-0030-SX	\$3,834.00
ITB-175-60-CN	175,000	60'	NG*	JJ-E175-CN	TM-1030-SX	TM-0030-SX	\$3,834.00
ITB-175-70-CN	175,000	70'	NG Only	JJ-E175-CN	TM-1030-SX	TM-0040-SX	\$4,106.00
ITB-200-50-CN	200,000	50'	NG Only	JJ-E200-CN	TM-1030-SX	TM-0020-SX	\$3,562.00
ITB-200-60-CL	200,000	60'	LP **	JJ-E200-CL	TM-1030-SX	TM-0030-SX	\$3,834.00
ITB-200-60-CN	200,000	60'	NG*	JJ-E200-CN	TM-1030-SX	TM-0030-SX	\$3,834.00
ITB-200-70-CL	200,000	70'	LP **	JJ-E200-CL	TM-1030-SX	TM-0040-SX	\$4,106.00
ITB-200-70-CN	200,000	70'	NG*	JJ-E200-CN	TM-1030-SX	TM-0040-SX	\$4,106.00

* Field conversion kits required for LP fuel are listed in the accessories section; ** Burner can be ordered LP

Notes:

1. Tube Heater System ships in 2 or 3 cartons with Burner Kit + required Tube Kit(s) for heater length
2. HIGH ALTITUDE APPLICATION: Above 4,500 ft Reduce Total System Length by 20 ft (Total System = Air Duct + Tube + Vent).
3. Refer to manual for model details and orifice chart.
4. Burner Kits, and tube kits are packaged separately and clearly labelled for ease of assembling orders and shipment
5. Suspend with chain, cable, or threaded rod; Suspension points: 2 per tube; e.g.: 40 ft heater has 8 suspension points

ITB Burner Kit

PART #	CAPACITY	MOUNTS TO TUBE LENGTHS	FUEL	FLEX GAS CONNECTOR	LIST PRICE
JJ-E045-CN	45,000	20'	N.G.*	1/2" x 24"	\$1,360.00
JJ-E060-CN	60,000	20', 30'	N.G.*	1/2" x 24"	\$1,360.00
JJ-E080-CN	80,000	20', 30', 40'	N.G.*	1/2" x 24"	\$1,360.00
JJ-E100-CN	100,000	20' special	N.G. Only	1/2" x 24"	\$1,360.00
JJ-E110-CN	110,000	30', 40', 50'	N.G.*	1/2" x 24"	\$1,360.00
JJ-E110-CL	110,000	30', 40', 50'	LP **	1/2" x 24"	\$1,360.00
JJ-E130-CN	125,000	30'	NG** (30' in NG Only)	1/2" x 24"	\$1,360.00
JJ-E130-CN	125,000	40', 50'	N.G.* (40' & 50' for NG or LP)	1/2" x 24"	\$1,360.00
JJ-E155-CN	150,000	40', 50', 60'	N.G.*	3/4" X 36"	\$1,417.00
JJ-E175-CN	175,000	50', 60', 70'	N.G.* (70' is NG Only)	3/4" X 36"	\$1,481.00
JJ-E175-CL	175,000	50', 60'	L.P.** (70' not available for LP)	3/4" X 36"	\$1,481.00
JJ-E200-CN	200,000	50', 60', 70'	N.G.*	3/4" X 36"	\$1,481.00
JJ-E200-CL	200,000	LP: 60', 70'	L.P.** (50' not available for LP)	3/4" X 36"	\$1,481.00

* Field conversion kits required for LP fuel are listed in the accessories section; ** Burner can be ordered LP

Notes:

1. Burner kit includes: flexible gas connector, status indicator lights, electrical cord & plug, mounted igniter, birdscreened 4" diameter air intake adapter on blower.
2. All burner assemblies operate on line voltage (120VAC), but are factory ready for 24Vac Thermostat control

ITB Tube Kits

Stand-Alone Tube Kits (do not require any additional Tube Kit)

TUBE KIT PART#	LENGTH	OUTPUT (Btuh)	DESCRIPTION	LIST PRICE
TM-1420-SX	20'	45/60/80,000	Flanged aluminized tube + 1 steel tube: Turbulators 4 ft + 8 ft	\$910.00
TM-1020-SX	20'	100,000 Only	Flanged aluminized tube + 1 steel tube: Turbulator Special 8 ft	\$1,163.00
TM-1430-SX	30'	60/80/110/125,000	Flanged aluminized tube + 1 aluminized tube + 1 steel tube: Turbulators 5 ft + 8 ft (5 ft turbulator removed in field for 60 & 80,000)	\$1,163.00
TM-1040-SX	40'	80/110/125/150,000	Flanged aluminized tube + 1 aluminized tube + 2 steel tubes: Turbulators 2 ft + 10 ft	\$1,416.00

Primary Tube Kits (require a Secondary Kit that assembles to create 50', 60' & 70' heaters)

TUBE KIT PART#	LENGTH	OUTPUT	DESCRIPTION	LIST PRICE
TM-F030-SX	30'	110/125/150,000	Flanged aluminized tube + 1 aluminized tube + 1 steel tube; Turbulator 2 ft	\$1,139.00
TM-1030-SX	30'	175/200,000	Flanged stainless steel tube + 1 aluminized tube + 1 steel tube: Turbulators 4 ft + 6 ft (4 ft turbulator section removed in field for 200,000 x 60 ft & 70 ft)	\$1,358.00

Secondary Tube Kits (needed with above Primary Kits to make 50', 60' & 70' heaters)

TUBE KIT PART#	LENGTH	DESCRIPTION	LIST PRICE
TM-0020-SX	20'	Two steel tubes (makes 50' heater with either 30' primary)	\$729.00
TM-0030-SX	30'	Three steel tubes (makes 60' heater with either 30' primary)	\$1,001.00
TM-0040-SX	40'	Four steel tubes (makes 70' heater with 30' primary TS-1030-JZ)	\$1,274.00
TM-1010-SX	10'	One steel tube, reflector, hangers, tube coupler	\$497.00

Notes:

Tube Kits include Swaged Tubes, Reflectors, End Caps, Hangers, Tube Couplers and Turbulators as required

ITT Series Tube Heaters

ORDER BY KIT PART #	CAPACITY INPUT (Btuh)	TUBE LENGTH	FUEL	Burner Kit #	Tube Kit 1 #	Tube Kit 2 #	LIST PRICE
ITT-80-20-CN	80,000/60,000	20'	NG*	JJ-080T-CN	TM-1420-SX	-	\$2,418.00
ITT-80-30-CN	80,000/60,000	30'	NG*	JJ-080T-CN	TM-1430-SX	-	\$2,672.00
ITT-110-30-CN	110,000/75,000	30'	NG*	JJ-110T-CN	TM-1430-SX	-	\$2,672.00
ITT-110-30-CL	110,000/75,000	30'	LP**	JJ-110T-CL	TM-1430-SX	-	\$2,672.00
ITT-110-40-CN	110,000/75,000	40'	NG*	JJ-110T-CN	TM-1040-SX	-	\$2,923.00
ITT-110-40-CL	110,000/75,000	40'	LP**	JJ-110T-CL	TM-1040-SX	-	\$2,923.00
ITT-130-30-CN	125,000/90,000	30'	NG Only	JJ-130T-CN	TM-1430-SX	-	\$2,672.00
ITT-130-40-CN	125,000/90,000	40'	NG*	JJ-130T-CN	TM-1040-SX	-	\$2,923.00
ITT-155-40-CN	150,000/110,000	40'	NG*	JJ-155T-CN	TM-1040-SX	-	\$2,996.00
ITT-155-50-CN	150,000/110,000	50'	NG*	JJ-155T-CN	TM-F030-SX	TM-0020-SX	\$3,448.00
ITT-175-50-CN	175,000/125,000	50'	NG Only	JJ-175T-CN	TM-1030-SX	TM-0020-SX	\$3,727.00

ITT-175-60-CN	175,000/125,000	60'	NG Only	JJ-175T-CN	TM-1030-SX	TM-0030-SX	\$3,998.00
ITT-200-50-CN	200,000/140,000	50'	NG Only	JJ-200T-CN	TM-1030-SX	TM-0020-SX	\$3,727.00
ITT-200-60-CN	200,000/140,000	60'	NG Only	JJ-200T-CN	TM-1030-SX	TM-0030-SX	\$3,998.00

* Field conversion kits required for LP fuel are listed in the accessories section; ** Burner can be ordered LP

Notes:

1. Tube Heater System ships in 2 or 3 cartons with Burner Kit + required Tube Kit(s) for heater length
2. HIGH ALTITUDE APPLICATION: Above 4,500 ft Reduce Total System Length by 20 ft (Total System = Air Duct + Tube + Vent).
3. Refer to manual for model details and orifice chart.
4. Burner Kits, and tube kits are packaged separately and clearly labelled for ease of assembling orders and shipment
5. Suspend with chain, cable, or threaded rod; Suspension points: 2 per tube; e.g.: 40 ft heater has 8 suspension points

ITT Burner Kit

PART #	CAPACITY	MOUNTS TO TUBE LENGTHS	FUEL	FLEX GAS CONNECTOR	LIST PRICE
JJ-080T-CN	80,000/60,000	20', 30'	N.G.*	1/2" x 24"	\$1,544.00
JJ-110T-CN	110,000/75,000	30', 40'	N.G.*	1/2" x 24"	\$1,544.00
JJ-110T-CL	110,000/75,000	30', 40'	LP**	1/2" x 24"	\$1,544.00
JJ-130T-CN	125,000/90,000	30'	N.G. ONLY	1/2" x 24"	\$1,544.00
JJ-130T-CN	125,000/90,000	40'	N.G.*	1/2" x 24"	\$1,544.00
JJ-155T-CN	150,000/110,000	40', 50'	N.G.*	3/4" X 36"	\$1,618.00
JJ-175T-CN	175,000/125,000	50', 60'	N.G. ONLY	3/4" X 36"	\$1,681.00
JJ-200T-CN	200,000/140,000	50', 60'	N.G. ONLY	3/4" X 36"	\$1,681.00

* Field conversion kits required for LP fuel are listed in the accessories section; ** Burner can be ordered LP

Notes:

1. Burner kit includes: flexible gas connector, status indicator lights, electrical cord & plug, mounted igniter, birdscreened 4" diameter air intake adapter on blower.
2. All burner assemblies operate on line voltage (120VAC), but are factory ready for 24Vac Thermostat control

ITT Tube Kit

Stand-Alone Tube Kits (do not require any additional Tube Kit)

TUBE KIT PART#	LENGTH	OUTPUT (Btuh)	DESCRIPTION	LIST PRICE
TM-1420-SX	20'	80000	Flanged aluminized tube + 1 steel tube: Turbulators 4 ft + 8 ft	\$910.00
TM-1430-SX	30'	80/110/125,000	Flanged aluminized tube + 1 aluminized tube + 1 steel tube: Turbulators 5 ft + 8 ft (5 ft turbulator removed in field for 60 & 80,000)	\$1,163.00
TM-1040-SX	40'	110/125/150,000	Flanged aluminized tube + 1 aluminized tube + 2 steel tubes: Turbulators 2 ft + 10 ft	\$1,416.00

Primary Tube Kits (require a Secondary Kit that assembles to create 50', 60' & 70' heaters)

TUBE KIT PART#	LENGTH	OUTPUT	DESCRIPTION	LIST PRICE
TM-F030-SX	30'	150000	Flanged aluminized tube + 1 aluminized tube + 1 steel tube; Turbulator 2 ft	\$1,139.00
TM-1030-SX	30'	175/200,000	Flanged stainless steel tube + 1 aluminized tube + 1 steel tube: Turbulators 4 ft + 6 ft (4 ft turbulator section removed in field for 200,000 x 60 ft & 70 ft)	\$1,358.00

Secondary Tube Kits (needed with above Primary Kits to make 50', 60' & 70' heaters)

TUBE KIT PART#	LENGTH	DESCRIPTION	LIST PRICE
TM-0020-SX	20'	Two steel tubes (makes 50' heater with either 30' primary)	\$729.00
TM-0030-SX	30'	Three steel tubes (makes 60' heater with either 30' primary)	\$1,001.00
TM-1010-SX	10'	One steel tube, reflector, hangers, tube coupler	\$497.00

Notes:

Tube Kits include Swaged Tubes, Reflectors, End Caps, Hangers, Tube Couplers and Turbulators as required

ITB-U/ITT-U Series

U-Tube Heaters

www.infrasave.com/products/itb-series

→ Features

The TB/ITT economical radiant U-tube heater is ideal for indoor or commercial and industrial applications. This entry standard efficiency model shares many of the same features with the straight IQ model.



- Available in single-stage and 2-stage models
- U-tube concentrates heat output
- 10' - 30' U-Tube heater lengths
- 180° turn box (elbow) included in the primary tube Kit
- 60,000 – 200,000 input BTU/HR models
- Emissive coating on radiant tubes
- Beam hangers allow flexible positioning along with the system
- All burner assemblies powered by hard wired 120V line voltage
- Line voltage and 24-volt thermostat ready
- Birdscreened Combustion Air Collar - 4" to allow for sealed combustion
- Whisper quiet ceramic burner
- Swing-down cabinet service access
- End capped reflectors
- Flexible gas connector included
- Gas supply & vent at the same end of the heater
- Warranty includes; 5-year tube, 5-year burner cup, 2-year components

ITB-U Series Tube Heaters

ORDER BY KIT PART #	CAPACITY INPUT (Btuh)	TUBE LENGTH	FUEL	Burner Kit #	Tube Kit 1 #	Tube Kit 2 #	LIST PRICE
PU-OJ40-CN	40,000	10' Total	NG*	-	-	-	\$2,702.00
ITBU-60-10-CN	60,000	10'U = 2 x 10'	NG*	JJ-E060-CN	TM-1410-SU	-	\$2,537.00
ITBU-80-10-CN	80,000	10'U = 2 x 10'	NG*	JJ-E080-CN	TM-1410-SU	-	\$2,537.00
ITBU-80-15-CN	80,000	15'U = 2 x 15'	NG*	JJ-E080-CN	TM-1415-SU	-	\$2,969.00
ITBU-110-15-CN	110,000	15'U = 2 x 15'	NG*	JJ-E110-CN	TM-1415-SU	-	\$2,969.00
ITBU-110-15-CL	110,000	15'U = 2 x 15'	LP**	JJ-E110-CL	TM-1415-SU	-	\$2,969.00
ITBU-110-20-CN	110,000	20'U = 2 x 20'	NG*	JJ-E110-CN	TM-1020-SU	-	\$3,066.00
ITBU-110-20-CL	110,000	20'U = 2 x 20'	LP**	JJ-E110-CL	TM-1020-SU	-	\$3,066.00
ITBU-130-15-CN	125,000	15'U = 2 x 15'	NG Only	JJ-E130-CN	TM-1415-SU	-	\$2,969.00

ITBU-130-20-CN	125,000	20' U = 2 x 20'	NG*	JJ-E130-CN	TM-1020-SU	-	\$3,066.00
ITBU-155-20-CN	150,000	20' U = 2 x 20'	NG*	JJ-E155-CN	TM-1020-SU	-	\$3,123.00
ITBU-155-30-CN	150,000	30' U = 2 x 30'	NG*	JJ-E155-CN	TM-0020-SU	TM-0010-SU	\$3,816.00
ITBU-175-30-CN	175,000	30' U = 2 x 30'	NG*	JJ-E175-CN	TM-A120-SU	TM-0010-SU	\$4,112.00
ITBU-200-30-CN	200,000	30' U = 2 x 30'	NG*	JJ-E200-CN	TM-A120-SU	TM-0010-SU	\$4,112.00

* Field conversion kits required for LP fuel ; ** Burner can be ordered LP

Notes:

1. A Tube Heater System ships in 2 or 3 individual cartons with a Burner Kit + Tube Kit[s] required for heater length
2. Burner Kits, and tube kits are packaged separately and clearly labelled for ease of assembling orders and shipment
3. High altitude applications: Above 4,500 ft Reduce Total System Length by 20 ft [Total System = Air Duct + Tube + Vent].

ITB-U Burner Kit

PART #	CAPACITY	MOUNTS TO TUBE LENGTHS	FUEL	FLEX GAS CONNECTOR	LIST PRICE
JJ-E060-CN	60,000 Btuh	10' U	N.G.*	1/2" x 24"	\$1,360.00
JJ-E080-CN	80,000 Btuh	10' U, 15' U	N.G.*	1/2" x 24"	\$1,360.00
JJ-E110-CN	110,000 Btuh	15' U, 20' U	N.G.*	1/2" x 24"	\$1,360.00
JJ-E110-CL	110,000 Btuh	15' U, 20' U	LP **	1/2" x 24"	\$1,360.00
JJ-E130-CN	125,000 Btuh	15' U	N.G. Only	1/2" x 24"	\$1,360.00
JJ-E130-CN	125,000 Btuh	20' U	N.G.*		\$1,360.00
JJ-E155-CN	150,000 Btuh	20' U, 30' U	N.G.*	3/4" X 36"	\$1,417.00
JJ-E175-CN	175,000 Btuh	30' U	N.G. Only	3/4" X 36"	\$1,481.00
JJ-E200-CN	200,000 Btuh	30' U	N.G. Only	3/4" X 36"	\$1,481.00

* Field conversion kits required for LP fuel are listed in the accessories section; ** Burner can be ordered LP

ITB-U Series Tube Kits

Stand-Alone Tube Kits (do not require any additional Tube Kit)

TUBE KIT PART#	LENGTH	OUTPUT (Btuh)	DESCRIPTION	LIST PRICE
TM-1410-SU	10' U Qty 2 x 10ft tubes	60/80,000	Flanged aluminized tube + 1 steel tube; 180° Turn Box; Turbulators 4 ft + 10 ft	\$1,178.00
TM-1415-SU	15' U Qty 2 x 10ft tubes Qty 2 x 5ft tubes	80/110/125,000	Flanged aluminized tube 10' + 1 steel tube 10' + 2 steel tube 5'; 180° Turn Box; Turbulators 4 ft + 10 ft	\$1,610.00
TM-1020-SU	20' U Qty 4 x 10ft tubes	110/125/150,000	Flanged aluminized tube + 3 steel tube; 180° Turn Box; Turbulator 10 ft	\$1,708.00

For 30' U Tube Systems: Primary Tube Kit + Secondary Tube Kit ship in separate cartons

Option 1: 150,000 x 30' U

TUBE KIT PART#	LENGTH	DESCRIPTION	LIST PRICE
TM-0020-SU	20'	Flanged aluminized tube + 3 steel tube; 180° Turn Box	\$1,670.00
TM-0010-SU	10'	Needed with TM-0020-SU to make 30' U-Tube heaters	\$729.00
			\$2,399.00

Option 2: 175,000 or 200,000 x 30' U

TUBE KIT PART#	LENGTH	DESCRIPTION	LIST PRICE
TM-A120-SU	20'	Flanged stainless steel tube + 1 aluminized tube + 2 steel tube; Turbulator 10 ft; 180° Turn Box	\$1,906.00
TM-0010-SU	10'	Needed with TM-A120-SU to make 30' U-Tube heaters	\$729.00
			\$2,635.00

Notes: Order Both Tube Kit #'s: 20 ft Primary Kit appropriate for input + 10 ft Secondary Kit to make 30' U-Tube heaters

ITT-U Series Tube Heaters

ORDER BY KIT

PART #	CAPACITY INPUT (Btuh)	TUBE LENGTH	FUEL	Burner Kit #	Tube Kit 1 #	Tube Kit 2 #	LIST PRICE
ITTU-80-10-CN	80,000/60,000	10'U = 2 x 10'	NG*	JJ-080T-CN	TM-1410-SU	-	\$2,688.00
ITTU-80-15-CN	80,000/60,000	15'U = 2 x 15'	NG*	JJ-080T-CN	TM-1415-SU	-	\$3,117.00
ITTU-110-15-CN	110,000/75,000	15'U = 2 x 15'	NG*	JJ-110T-CN	TM-1415-SU	-	\$3,117.00
ITTU-110-15-CL	110,000/75,000	15'U = 2 x 15'	LP**	JJ-110T-CL	TM-1415-SU	-	\$3,117.00
ITTU-110-20-CN	110,000/75,000	20'U = 2 x 20'	NG*	JJ-110T-CN	TM-1020-SU	-	\$3,215.00
ITTU-110-20-CL	110,000/75,000	20'U = 2 x 20'	LP**	JJ-110T-CL	TM-1020-SU	-	\$3,215.00
ITTU-130-15-CN	125,000/90,000	15'U = 2 x 15'	NG Only	JJ-130T-CN	TM-1415-SU	-	\$3,117.00
ITTU-130-20-CN	125,000/90,000	20'U = 2 x 20'	NG*	JJ-130T-CN	TM-1020-SU	-	\$3,215.00
ITTU-155-20-CN	150,000/110,000	20'U = 2 x 20'	NG*	JJ-155T-CN	TM-1020-SU	-	\$3,288.00
ITTU-155-30-CN	150,000/110,000	30'U = 2 x 30'	NG*	JJ-155T-CN	TM-0020-SU	TM-0010-SU	\$3,977.00
ITTU-175-30-CN	175,000/125,000	30'U = 2 x 30'	NG Only	JJ-175T-CN	TM-A120-SU	TM-0010-SU	\$4,277.00
ITTU-200-30-CN	200,000/140,000	30'U = 2 x 30'	NG Only	JJ-200T-CN	TM-A120-SU	TM-0010-SU	\$4,277.00

Notes:

1. All burner assemblies operate on line voltage (120VAC), but are factory ready for 24Vac Thermostat control
2. Burner Kit Includes: flexible gas connector, status indicator lights, electrical cord & plug, mounted igniter, birdscreened 4" diameter air intake adapter on blower.
- 3.* Field conversion kits required for LP fuel ; ** Burner can be ordered LP
4. 180° Turn Box packed in Tube Kit 1 #

ITT-U Series Burner Kit

PART #	CAPACITY	MOUNTS TO TUBE LENGTHS	FUEL	FLEX GAS CONNECTOR	LIST PRICE
JJ-080T-CN	80,000/60,000	10'U, 15'U	N.G.*	1/2" x 24"	\$1,544.00
JJ-110T-CN	110,000/75,000	15'U, 20'U	N.G.*	1/2" x 24"	\$1,544.00
JJ-110T-CL	110,000/75,000	15' U, 20' U	LP **	1/2" x 24"	\$1,544.00
JJ-130T-CN	125,000/90,000	15'U	N.G. Only	1/2" x 24"	\$1,544.00
JJ-130T-CN	125,000/90,000	20' U	N.G.*	1/2" x 24"	\$1,544.00
JJ-155T-CN	150,000/110,000	20'U, 30'U	N.G.*	3/4" X 36"	\$1,618.00
JJ-175T-CN	175,000/125,000	30'U	N.G. Only	3/4" X 36"	\$1,681.00
JJ-200T-CN	200,000/140,000	30'U	N.G. Only	3/4" X 36"	\$1,681.00

* Field conversion kits required for LP fuel are listed in the accessories section; ** Burner can be ordered LP

ITT-U Series Two-Stage Tube Kits

Stand-Alone Tube Kits (do not require any additional Tube Kit)

TUBE KIT PART#	LENGTH	OUTPUT (Btuh)	DESCRIPTION	LIST PRICE
TM-1410-SU	10'U Qty 2 x 10ft tubes	60/80,000	Flanged aluminized tube + 1 steel tube; 180° Turn Box; Turbulators 4 ft + 10 ft	\$1,178.00
TM-1415-SU	15'U Qty 2 x 10ft tubes Qty 2 x 5ft tubes	80/110/125,000	Flanged aluminized tube 10' + 1 steel tube 10' + 2 steel tube 5'; 180° Turn Box; Turbulators 4 ft + 10 ft	\$1,610.00
TM-1020-SU	20'U Qty 4 x 10ft tubes	110/125/150,000	Flanged aluminized tube + 3 steel tube; 180° Turn Box; Turbulator 10 ft	\$1,708.00

For 30'U Tube Systems: Primary Tube Kit + Secondary Tube Kit ship in separate cartons

Option 1: 150,000 x 30' U

TUBE KIT PART#	LENGTH	DESCRIPTION	LIST PRICE
TM-0020-SU	20'	Flanged aluminized tube + 3 steel tube; 180° Turn Box	\$1,670.00
TM-0010-SU	10'	Needed with TM-0020-SU to make 30' U-Tube heaters	\$729.00
			\$2,399.00

Option 2: 175,000 or 200,000 x 30' U

TUBE KIT PART#	LENGTH	DESCRIPTION	LIST PRICE
TM-A120-SU	20'	Flanged stainless steel tube + 1 aluminized tube + 2 steel tube; Turbulator 10 ft; 180° Turn Box	\$1,906.00
TM-0010-SU	10'	Needed with TM-A120-SU to make 30' U-Tube heaters	\$729.00
			\$2,635.00

Notes: Order Both Tube Kit #'s: 20 ft Primary Kit appropriate for input + 10 ft Secondary Kit to make 30'U-Tube heaters:

Compact Model P40-R

Residential Garage / Shop Tube Heater

<https://www.infrasave.com/products/p40-r/>

→ Features

The P40R, direct vented room tube heaters, are a great addition to your residential garage, greenhouse or workshop.

BURNER is 40,000 Btuh single-stage Natural Gas (optional conversion kit for LPG), 120V 3-Pronged Plug, 24V Thermostat with 20 ft of 18/2 wire.



TUBE/REFLECTOR SYSTEM is corrosion-resistant aluminized steel construction. The 4-inch diameter U-tube provides 17 ft of heat exchange tube in compact 10 ft length; includes 4 ft Lion Chain and four safety snap hooks.

- Pre-assembled for an easy installation right from the box
- Includes: 24-volt thermostat & cable, hanging chain, and suspension hooks
- This heater is approved as a Vented Room Heater certified for residential garage use
- Overhead suspended type
- ANSI/CSA Standards and Code requirements do not allow direct connection of an outside combustion air duct to the heater
- Rigid connection to the gas supply complies with gas code requirements
- Optionally, an installer may choose to connect to the gas supply using a metallic flexible gas connector
- Warranty includes; 3-year tube, 3-year burner cup, 3-year components

P40R Series Tube Heaters

MODEL	CAPACITY	FUEL	LENGTH	PART #	LIST PRICE
P40-R	40,000 Btuh	NG	10'	PU-R040-BN	\$2,612.00

Notes:

1. Burners are produced in natural gas only - Field conversion kit required for LP
2. This heater is approved as a Vented Room Heater suitable for residential use
3. Overhead suspended type.
4. ANSI/CSA Standards and Code requirements do not allow direct connection of an outside combustion air duct to the heater.
5. Rigid connection to the gas supply is in compliance with Gas Code requirements.
6. Optionally, an installer may choose to connect to the gas supply using a metallic flexible gas connector.

Compact Models P40U-I, P40U-IP, and P40U-IW Series

U-Tube Heaters

www.infrasave.com/products/p40-r/

→ Features

The P40U-I Series complements IQ Series and ITB Series Models for compact factory assembled U-Tube assembled heater for commercial/industrial applications.



The P40U-IP and P40U-IW round out the outdoor and harsh environment models IWP/IWP2.

BURNER: 40,000 Btuh Natural Gas (optional conversion kit for LPG), Flexible Gas Connector, 4" Combustion Air Collar, 120V 3-Pronged Plug, factory ready for 24Vac or line voltage thermostat.

TUBE / REFLECTOR SYSTEM: Corrosion-resistant aluminized steel construction, 4-inch diameter U-tube provides 17 ft of heat exchange tube in compact 10 ft length; includes 4 ft Lion Chain and four safety snap hooks.

- Pre-assembled for an easy installation right from the box
- Indoor commercial use:
 - P40U-I: Painted Housing with hinged lower panel and single-fastener access for servicing
- For outdoor or indoor harsh environment use:
 - P40U-IP: Powder Coated Weather Resistant Housing for outdoor use
 - P40U-IW: Stainless Steel Weather-Resistant Housing for harsh environments
- Warranty includes; 10-year tube, 10-year burner cup, 3-year components

P40U-I, P40U-IP, and P40U-IW Series Tube Heaters

MODEL	CAPACITY	FUEL	LENGTH	DESCRIPTION	PART #	LIST PRICE
P40U-I	40,000 Btuh	NG	10'	Painted; Drop jaw access for service	P40U-I	\$2,702.00
P40U-IP	40,000 Btuh	NG	10'-3"	Powder Coated weather resistant	P40U-IP	\$3,404.00
P40U-IW	40,000 Btuh	NG	10'-3"	Stainless Steel weather resistant	P40U-IW	\$3,817.00

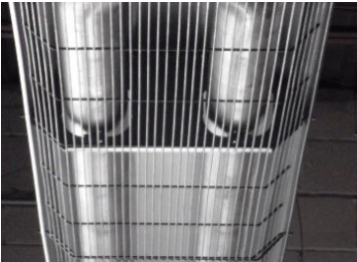
Notes:
1. Burners are stocked in natural gas only - Field conversion kit required for LP

compactSchwank P40 Series

Accessories

Optional Accessories

Part #	Item	LIST PRICE
JS-0502-UR-GK	Protective Guard Screen Notes: 1. Required for installations between 6-8ft above the floor 2. Zinc coated weather protection 3. Recommended for patio installations 4. two piece set, field installed, clips in to reflector	\$338.00
JA-0528-XX	4" Horizontal Wall Flue Terminal	\$51.00



Guard Screen

LPG Field Conversion Kit for P40R Burners

Part #	Item	Input	LIST PRICE
JS-0555-XA	Field Conversion Kit - NG to LP	40,000 Btuh	\$61.00
JS-0555-XB	Field Conversion Kit - LP to NG	40,000 Btuh	\$61.00

Tube Heaters

Optional Thermostats and Controls



General Information

Tube heaters are "factory ready" for line voltage or 24Vac thermostat control.

IMPORTANT: All Models use Fenwal Ignition Control

- The Fenwal ignition control has a post-purge feature that purges the system when call-for-heat ends
- For the post-purge feature to function, a 24V thermostat or 24V control signal must be used
- Line voltage control will disconnect power from the ignition control and disable the post-purge feature

Tube heater 24V control options:

Single TUBE HEATER per Single TruTemp / 24V THERMOSTAT / patioPanel switch* / Remote Control

- 24V power to the thermostat is supplied by the transformer within the heater.
- A 24V/120V relay switch (powers blower) is onboard the Fenwal Ignition Control, or is factory installed in the burner of Outdoor models that use a potted control.
- ORDER - Any 24 volt thermostat or TruTemp supplied by Schwank to control a single tube heater.
- patioPanel: 24V power to the panel switch is supplied from the transformer within the burner. ONLY ONE tube heater can be controlled by each patioPanel switch.
- Remote Control: Each Burner is ready for installation of Remote Control Receiver Kit: JP-1236-RK. Refer to patio heater section for information on Remote Control options

Multiple tube heaters per single TruTemp / 24V thermostat / patioPanel switch* / remote control

- MULTIPLE HEATERS IN A COMMON ZONE: Requires Accessory: Relay Switch JS-0568-CC
- The first burner is controlled by connection of a 24V thermostat (or TruTemp, or other 24V power source)
- A 24V power is provided to the thermostat by the transformer in the first burner. Example: A zone with 4 heaters requires: 1 x 24V Thermostat + 3 x Relays
- Each additional burner in the zone requires an individual Relay Switch JS-0568-CC
- The Relay Switch is field mounted on or in the burner housing
- For outdoor application the Relay Switch must be mounted in a field supplied NEMA 4 enclosure or inside the burner housing
- Field-installed on exterior or interior of the burner housing
- Refer to 24V Guidelines and the I&O Manual wiring diagram

Thermostats and controls

Part #	Item	Description	LIST PRICE
JS-0568-CC	24V Relay Switch	Control Multiple Tube Heaters in a common zone with one 24V Thermostat (wired to 1st heater)	\$37.00
Single Stage			
JM-0150-XX	TruTemp Infrared Setback Thermostat	BEST thermostat control for IR heaters with 24Vac; °F & °C scales and enables all features of the ignition control	\$260.00
JL-0772-XX	Line Voltage Thermostat (°F & °C Scales)	Note: Line voltage control disables the Post Purge feature of the ignition control. Use 24Vac Thermostat for Post Purge.	\$75.00
JS-0569-WR	Low Voltage (24V) Digital Thermostat (°F / °C Selectable)	Note: Low voltage control enables all features of the ignition control	\$125.00
JS-0570-XX	Moisture Proof Thermostat (NEMA 4X enclosure)	NEMA 4X Rated Single-StageThermostat	\$180.00
JS-0569-WR-P	24V Luminous 5/2 Programmable Digital Thermostat		\$160.00
Two-Stage			
JS-0570-TT	Moisture proof NEMA 4X two-stage thermostat	NEMA 4X Rated Two-StageThermostat	\$368.00
JS-0569-DT	Two-Stage 24V Digital Thermostat		\$404.00
JS-0569-DT-P	24V Digital Two-Stage Programmable Thermostat		\$669.00



JS-0570-XX



JL-0772-XX



JS-0569-WR



JS-0569-DT



JS-0569-DT-P

Tube Heaters

TruTemp Infrared Setback Thermostat

 **Features**

The only infrared thermostat that senses and averages radiant and ambient temperatures for true comfort control and efficient heating system operation. An automatic setback feature further adds to fuel savings when the heated space is unoccupied. TruTemp thermostat can be used in conjunction with all Schwank indoor heaters. With a 4" diameter, it fits standard electrical boxes.



Multiple heaters controlled by single TruTemp require option JS-0568-CC

Hight intensity heaters with exhaust fan controlled by single TruTemp per ZONE require option JM-0300-AA

- Field-installed on exterior or interior of the burner housing
- One is required for each burner except the first one in a zone. 24V TruTemp thermostat controls 1st burner. Example: A zone with 4 heaters requires: 1 x 24V TruTemp + 3 x Relay Switches
- Refer to 24V Guidelines and the I&O Manual wiring diagram

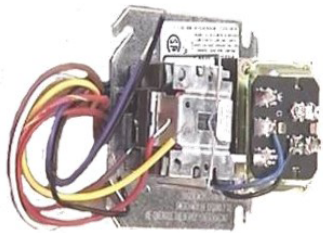
TruTemp Infrared Setback Thermostat

Part #	Item	Description	List Price
JM-0150-XX	TruTemp Thermostat	24 Volts ac	\$260.00

Optional Accessories

Part #	Description	List Price
JS-0568-CC	24V Relay Switch	\$37.00
JM-0300-AA	Transformer Relay	\$210.00
JM-0180-XX	Two S/S Tamperproof Screws and One Tool (Order for first TruTemp on project)	\$116.00
JM-0180-AA	Two S/S Tamperproof Screws (Order for additional TruTemp on project)	\$13.00

Notes:
1. Tamperproof screws are available as a TruTemp security option to prevent unauthorized tampering.



Transformer/Relay

Tube Heaters

Accessories

Suspension Hardware

superTube = SST & SST-Extreme = total tube length / 10 x 2

ultraSchwank = UHE = (total tube length / 10) x 2 + 1

premiereSchwank and duraSchwank = STS-JZ, SPW/SPW2, STW/STW2, STWS/STWS2 = total tube length / 10 + 2

builderSchwank = S100 & SET = total tube length / 5 + 1

All P40 Units = 4 suspension points

Calculate chain: example: S100 x 40 ft heater located 3 ft below structural support = ((40/5) + 1) = 9 suspension points x 3 = 27 ft of chain

Part #	Item	Description	Qty	LIST PRICE
JL-0800-GR-B	Gripple Express™	For indoor use only. No tools required for adjustment. Ready to use 10 ft cable length kit - loop one end. 100 lb work load.	Package of 10	\$339.00
JL-0800-XX	#2 Lion Chain	115 lb work load - 200 ft roll.		\$199.00
JL-0800-SH	Safety Snap Hooks - 2"		Package of 24	\$81.00
JL-0800-SH-B	Safety Snap Hooks - 2"		Package of 100	\$242.00
JL-0798-SH	'S' Hooks - 1 7/8"	Quantity of 'S' hooks needed: JZ Series quantity required = ((tube length/10) x 2) + 4 : ie: SPW-JZ x 40 ft = (40/10) x 2) + 4 = 12 hooks	Package of 25	\$46.00
JL-0798-CS	Clearance to combustible sign	Metal sign - 18" x 6" - 3/4" red lettering on white background		\$74.00



NOTE: Heater Suspension items are not available from Schwank in stainless steel.

Modular Elbow Kits

Are installed within the tube system for IQ, IW IWP & IWS tube heater models.

Note, the U-reflector angle adaptor is for the IQ, IW IWP & IWS models. The reflector cap must always be in the horizontal plane - the cap cannot be angle mounted. The Reflector Angle Adapter is required for angle mounting a reflector section before or after an elbow or mounting a reflector section at a different angle relative to the other reflectors in the system.

Part #	Item	Description	Qty	LIST PRICE
JS-0508-JZ	90° Aluminized Steel Elbow & Reflector Cover Kit	Compatible with IQ, IW IWP & IWS tube heater models. Elbow can be installed right or left hand - Includes coupler, reflector cover, hanger plate.		\$323.00
JS-0508-JZ	180° Elbow & Reflector Cover Kit	Compatible with IQ, IW IWP & IWS tube heater models. Required to order Qty 2 x 90° Elbow Kits	2	\$323.00
JS-0508-JZ-2	90° Stainless Steel Elbow & Reflector Cover Kit	Compatible with STWS models.		\$758.00
JS-0504-JZ	Ü Reflector Angle Adapter	One required at each juncture of an angle change at 45° angle.		\$33.00



Note: Stainless Steel accessories have longer lead times.

Elbow Kits

Are installed within the tube system for ITT + ITB models. These models do NOT have a reflector cover over the elbow. ITT Elbow Kit includes: one elbow, one 4" tube coupler and two reflector end caps.

Part #	Item	Description	Qty	LIST PRICE
JS-0508-SM	90° Aluminized Steel Elbow Kit	Only for "ITT" & "ITB" model heaters		\$238.00
JS-0508-SM	180° Aluminized Steel Elbow Kit	Only for "ITT" & "ITB" model heaters. Order qty 2 x JS-0508-SM OR order Model S100U or SETU	2	\$238.00



90° Elbow

Combustion Air Intake Hood

For use on walls only. Note: This is an optional accessory – as all tube heater models have a 4" diameter collar on the blower or burner for 4" air duct attachment. CAUTION: In some climates, hoarfrost can build on the bird screen and cause heater malfunction on proving air switch. If your area experiences hoarfrost, use a local solution for combustion air terminal.

Refer to I&O manual for complete details on venting and combustion air.

Part #	Item	Description	LIST PRICE
JS-0532-VC	4" Outside Air Intake Wall Vent Hood ~ birdscreened	Optional for ITB, ITT, IQ, and P40 Series model	\$40.00



Outside Air Intake Vent Hood

Venting

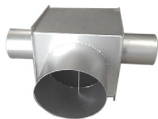
Horizontal Venting: Use the 'Wall' termination cap by Schwank, or use an approved 'High Wind' termination cap.

Verticle Venting: Use the termination cap for double-walled pipe supplied by the vent pipe manufacturer. Fits single wall vent pipe - field modification required to fit to double wall pipe

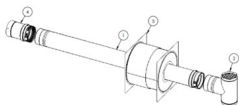
Part #	Item	Description	LIST PRICE
JA-0528-XX	4" horizontal (through wall)	Flue Vent Terminals. Fits single wall vent pipe - field crimp required to fit to double wall pipe. Use this termination cap by Schwank or use an approved High Wind termination cap as supplied by others.	\$51.00
JA-0514-XX	Vent Tee 4" X 4" X 6"	Roof Termination: Use approved cap supplied by manufacturer of double-walled vent pipe. Not available in stainless steel.	\$256.00
JA-0516-AA	4" x 8" Aluminized Steel Coupler with 2 x U-bolts	Optional Couplers for Vent Tee. ADD TWO optional tube couplers JA-0516-AA if desired for vent pipe connection to Tee.	\$86.00
JA-0524-KT	Vent Kit	4" Diameter Horizontal 316 Stainless Steel Category 3 Sidewall Vent Kit	\$640.00



JA-0528-XX



Vent Tree



Vent Kit

Decorative 'Tuxedo' Grille Kit

Dress up your tube heater installations with this matte black grille & aluminized steel framing. Ideal for showrooms, retail areas, outdoor patios, and restaurants.

Note, this is an optional accessory only for Tube Kits with "-JZ" suffix in the part number and secures with tabs to 'JZ' Series heater reflectors (not for S100 Series).

Part #	Item	Description	Qty	LIST PRICE
TG-0010-KT	Tuxedo Grill Kit JZ Models ONLY	Decorative 'Tuxedo' Grille Kit - 10 ft - Matte Black Grille	Each 10 foot section	\$733.00
JS-0509-KT	Reflector Side Extension	All models - 10" deep x 116" long c/w Qty 3 x 'S' hooks		\$98.00
JA-0780-XX	Tube Protection Screen STS-JZ, STW-JZ, SPW-JZ Models	5 ft length - 1/2" x 1/2" galvanized screen		\$202.00
JA-0780-XS	Tube Protection Screen S100, SET Models	5 ft length - custom order: longer lead time		\$202.00



Tuxedo Grill Kit



Tube Protection Screen

Tube Heaters

Gas Conversion Kits

Single-Stage Gas Conversion Kits

Models	Input	Part #	Description	List Price
P40-R, P40U-I, P40U-IP, P40U-IW	40,000	JS-0555-XA	NG to LP	\$61.00
P40-R, P40U-I, P40U-IP, P40U-IW	40,000	JS-0555-XB	LP to NG	\$61.00
IQ; ITB; IWP; IW	45,000	JS-0556-XC	NG to LP	\$94.00
IQ; ITB; IWP; IW	45,000	JS-0556-XD	LP to NG	\$94.00
IQ; ITB; IWP; IW	60,000	JS-0557-XX	NG to LP	\$59.00
IQ; ITB; IWP; IW	60,000	JS-0558-XX	LP to NG	\$59.00
IQ; ITB; IWP; IW	80,000	JS-0559-XX	NG to LP	\$59.00
IQ; ITB; IWP; IW	80,000	JS-0560-XX	LP to NG	\$59.00
IQ; ITB; IWP; IW	110,000*	JS-0561-XB	NG to LP	\$243.00
IQ; ITB; IWP; IW	110,000*	JS-0562-XB	LP to NG	\$198.00
IQ; ITB; IWP; IW	125,000*	JS-0563-XB	NG to LP	\$83.00
IQ; ITB; IWP; IW	125,000*	JS-0564-XB	LP to NG	\$83.00
IQ; ITB; IWP; IW	150 / 155,000	JS-0565-XX	NG to LP	\$59.00
IQ; ITB; IWP; IW	150 / 155,000	JS-0566-XX	LP to NG	\$59.00
IQ; ITB; IWP; IW	175,000*	JS-0567-AS	NG to LP	\$243.00
IQ; ITB; IWP; IW	175,000*	JS-0567-BS	LP to NG	\$194.00
IQ; ITB; IWP; IW	200,000*	JS-0567-CS	NG to LP	\$105.00
IQ; ITB; IWP; IW	200,000*	JS-0567-DS	LP to NG	\$84.00

Notes:

1. *Single Stage 110,000, 175,000 & 200,000 Burners for LP: These input rate burners require more extensive conversion in the field. Conversion is available, but best to order burners produced in LP from the factory
2. Different burner configurations exist for some burner input rates. MUST provide Model and Serial Numbers to Customer Service 1-877-686-3779
3. Check specific model price pages or manual for possible length restrictions with LP burners

Two-Stage Gas Conversion

Models	Input	Part #	Description	List Price
ITT, IWP2, IW2, IWS2	80/60	JS-0555-TC	NG to LP	\$83.00
ITT, IWP2, IW2, IWS2	80/60	JS-0555-TD	LP to NG	\$83.00
ITT, IWP2, IW2, IWS2	110/75	JS-0555-TG	NG to LP	\$83.00
ITT, IWP2, IW2, IWS2	110/75	JS-0555-TH	LP to NG	\$83.00
ITT, IWP2, IW2, IWS2	130/90	JS-0555-TK	NG to LP	\$83.00
ITT, IWP2, IW2, IWS2	130/90	JS-0555-TL	LP to NG	\$85.00
ITT, IWP2, IW2, IWS2	155/110	JS-0555-TO	NG to LP	\$83.00
ITT, IWP2, IW2, IWS2	155/110	JS-0555-TP	LP to NG	\$83.00
STP	50/38	JS-0554-LL-TP	NG to LP	\$75.00
STP	82/62	JS-0554-NL-TP	NG to LP	\$75.00
STP	115/80	JS-0554-PL-TP	NG to LP	\$75.00

Heating Solutions

High-intesity Heaters

High-intensity Heaters

IL Series	42
High-intensity Accessories	43 - 44

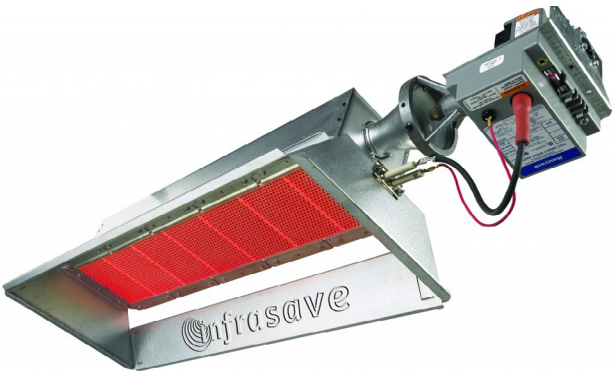
IL Series

High-Intensity Heater

www.infrasave.com/products/il-series/

→ Features

The most economical choice for a high-intensity heater, and includes assembled reflectors, gas valve and electronic ignition control. Ideal for indoor industrial and commercial facilities with high ceilings up to 70 feet that have large energy requirements and tight budget projects.



- Offers 5 single burner models: 21,500, 35,000, 50,000, 65,000, and 100,000 input BTU/HR models
- The 2 dual burner model: 143,000 and 200,000 input BTU/HR models
- Require 24 VAC electrical supply (120/24V transformer not included)
- Minimum mounting heights from 12'- 28' to a maximum mounting height of 70' high
- A double-wall reflector with a Venturi tube raises efficiency and allows smaller clearances for angled positions
- Patented Delta mixing chamber
- Warranty includes; 10-year Ceramic Tiles, 2-year components

IL Series

MODEL	CAPACITY	GAS	PART #	LIST PRICE
IL 25	21,500 Btuh	NG ONLY	IL-0025-NG	\$919.00
IL 37	35,000 Btuh	NG	IL-0037-NG	\$958.00
IL 37	35,000 Btuh	LP	IL-0037-LP	\$958.00
IL 50	50,000 Btuh	NG	IL-0050-NG	\$1,151.00
IL 50	50,000 Btuh	LP	IL-0050-LP	\$1,151.00
IL 75	65,000 Btuh	NG	IL-0075-NG	\$1,334.00
IL 75	65,000 Btuh	LP	IL-0075-LP	\$1,334.00
IL 100	100,000 Btuh	NG	IL-0100-NG	\$1,478.00
IL 100	100,000 Btuh	LP	IL-0100-LP	\$1,478.00
IL 150	143,000 Btuh	NG	IL-0150-NG	\$2,471.00
IL 150	143,000 Btuh	LP	IL-0150-LP	\$2,471.00
IL 200	200,000 Btuh	NG	IL-0200-NG	\$2,711.00
IL 200	200,000 Btuh	LP	IL-0200-LP	\$2,711.00

High-intensity Heater

Accessories

ecoSchwank Accessories

Part #	Description	Price
JL-07771-XX	Flexible Gas Connector 1/2" x 24" (Up to 155,000 Btuh)	\$61.00
JL-0771-YY	Flexible Gas Connector 3/4" x 36" - for ECO 52	\$190.00
JL-0798-JC	#8 Jack Chain - 60 lb work load - box 50'	\$119.00
JL-0800-XX	#2 Lion Chain - 115 lb work load - 200 ft roll	\$199.00
JL-0798-SH	'S' Hooks - Package of 25	\$46.00
JL-0800-SH	Safety Snap Hooks - 2" - Package of 24	\$81.00
JL-0800-SH-B	Safety Snap Hooks - 2" - Package of 100	\$242.00
JO-0368-XX	Pressure Equalizer Venturi Cover (for Drafty Areas)	\$304.00

Note: ECO 36 & 52 Require Two Venturi Covers

Optional ThermoStats

Description	Part #	Price
Line Voltage (120V) Thermostat	JL-0772-XX	\$75.00
Low Voltage (24V) Digital Thermostat °F & °C	JS-0569-WR	\$125.00
24V Luminous 5/2 Programmable Digital Thermostat	JS-0569-WR-P	\$160.00
TruTemp Set Back Infra-red Thermostat (24V)	JM-0150-XX	\$260.00
Transformer/Relay (For multi-heater control by TruTemp or 24V Thermostat)	JM-0300-AA	\$210.00

Notes:

1. JS-0569-WR & JM-0150-XX Require Transformer/Relay JM-0300-AA for multiple heater control

Tile Protection Grilles

Part #	Model	List Price
JX-0249-XX	IL 25	\$112.00
JX-0252-XX	IL 37	\$112.00
JX-0253-XX	IL 50	\$112.00
JX-0254-XX	IL 75	\$112.00
JX-0255-XX	IL 100	\$112.00

Note: Longer lead times for this accessory. 1/2" X 1/2" Bird Screen

Reflector Extensions

Part #	Model	List Price
JX-0260-SG-P	IL 25	\$80.00
JX-0236-SG-P	IL 37	\$146.00
JX-0237-SG-P	IL 50	\$152.00
JX-0238-SG-P	IL 75	\$164.00
JX-0239-SG-P	IL 100	\$244.00

Note: Longer lead times for this accessory. Sold as single piece kit. Order quantity two for both sides of heater.

Exhaust Systems

Schwank does not supply exhaust fan systems for high-intensity heaters, however they are readily available from your local distributor. Exhaust System Capacity:

- High Intensity heaters are installed unvented.
- Check local & national code requirements.
- National Code Exhaust Volume Requirements (in brief): USA: 4 cfm exhaust per 1,000 Btuh input. Canada: 300 cfm interlocked mechanical exhaust per 100,000 Btuh input or any fraction thereof.
- For all installations, the exhaust or opening for removal of flue products must be located above the level of the heaters.

Gas Conversion Kit

Part #	Model	Decription	List Price
JX-0253-XA	IL 37	NG to LP	\$92.00
JX-0252-XA	IL 37	LP to NG	\$92.00
JX-0253-XB	IL 50	NG to LP	\$92.00
JX-0252-XB	IL 50	LP to NG	\$92.00
JX-0253-XC	IL 75	NG to LP	\$92.00
JX-0252-XC	IL 75	LP to NG	\$92.00
JX-0253-XD	IL 100	NG to LP	\$92.00
JX-0252-XD	IL 100	LP to NG	\$92.00
JX-0253-XC-A	IL 150	NG to LP	\$110.00
JX-0252-XC-A	IL 150	LP to NG	\$110.00
JX-0253-XD-A	IL 200	NG to LP	\$110.00
JX-0252-XD-A	IL 200	LP to NG	\$110.00

Notes: When ordering, please provide heater model number, serial number, and gas type to convert to. Conversion kits are NOT available for: 2000 Series High Intensity and ecoSchwank-M millivolt heaters.

IMPORTANT: Obtain Model and Serial numbers from the Rating Label affixed to the heater: As safe practice, Schwank recommends that any heater 10 years or older not be converted. Deterioration of other components in the system may have occurred, and the installer will assume responsibility.

24V Transformers

Part #	Qty	SIZE	Description	List Price
JL-0776-XX	1 Heater	40 VA Transformer	4"x4" Electrical Box Mount	\$139.00
JL-0778-XX	Up to 4	100 VA Transformer	Closed Type	\$256.00
JL-0779-XX	5 to 6	150 VA Transformer	Closed Type	\$308.00
JL-0780-XX	7 to 9	200 VA Transformer	Closed Type	\$351.00
JL-0781-XX	10 to 12	250 VA Transformer	Closed Type	\$384.00
JL-0781-AA	13 to 16	350 VA Transformer	Closed Type	\$446.00

Notes: 24V Transformer Sizing for Space & Area Heating & Process Applications:

1. Transformer mounted at heater: Use 40 VA 24V transformer for each individual heater.

2. Transformer mounted remote from heater: On a single heater use one 40 VA 24V transformer. On a zone with multiple heaters, use transformer sized at 40VA per first heater plus 20VA for each additional heater.

Heating Solutions

Outdoor/Patio Heaters

Outdoor Heaters

General Information	46
phantomSchwank	47
IO-200 Series	48
IO-100 Series	49
Outdoor Heaters Accessories	50 - 52
eSchwank Ghost Series	53
eSchwank ES/ESD Series	54 - 55
eSchwank ES/ESD Series Accessories	56 - 60
parasolSchwank	61

General Information

Outdoor/Patio Heater Models

Outdoor heater selection guidelines

Schwank Design Forms

Outdoor & patio layouts and conditions differ widely and usually require a unique heating solution for each space. Below are some guidelines to assist in the selection of heaters for your outdoor project. Schwank offers design services for outdoor & patio projects.

Product warranty

Since 1951 Schwank has maintained a reputation of building quality industrial heaters. For this reason, and for our customer's protection, Schwank is prepared to support its heating equipment with the most comprehensive warranties in the industry.

Schwank warrants to the Purchaser that Schwank gas fired infra-red radiant heaters and all parts, are free from defects in material or workmanship under normal use and service for the periods of time listed on each product page.

Optional accessories and replacement parts are covered by the part manufacturer's warranty: typically 1-year. Product warranties consist only of providing a like replacement part for any defective part during the term of the warranty, F.O.B. Schwank.

Fuel Type and Field Conversion

1. Gas fired infrared radiant heat is ideal for "spot comfort" applications like patios, waiting lines, and smoking areas.
2. Regardless of temperature, wind-chill has a great impact on comfort and heater performance. Any wind break will improve outdoor comfort.
3. Heating customers from at least two sides is much more effective than heating from only one side.
4. If a project faces budget constraints, it is most effective to heat only a portion of a patio. Spreading too few heaters over a larger area will not satisfy customers nor the owner.

5. An investment in patio heating results in additional comfortable seating more cost-effectively than any other renovation.
6. 24-volt control patio heater models can be centrally operated from a patio panel, or by remote control.

	STP	IO-200	IWP	IW	ES ESD
Open Patio Area	✓	✓			
Canopy / Roof Over	☑	☑	✓	✓	✓
Enclosed Area	☑	☑	✓	✓	✓
Coastal Salt-Air Location	✓	✓		✓	
Perimeter Mount	✓	✓	✓	✓	✓
Permanent Mount	✓	✓	✓	✓	✓
Central Panel Control	✓	✓	✓	✓	✓
Remote Hand Set Control		✓	✓	✓	
Natural Gas or Propane	✓☑☑	✓☑☑	✓	✓	

Notes:
☑ = High-intensity approved for indoor and covered areas provided sufficient exhaust:
CAN: B149.1 requires 300 cfm interlocked exhaust for each 100,000 Btuh input
USA: National Fuel Gas Code (NFPA 54) requires 4 cfm for each 1,000 Btuh input
☑☑ = Two Stage 2152-SS is available NG Only

phantomSchwank STP Series

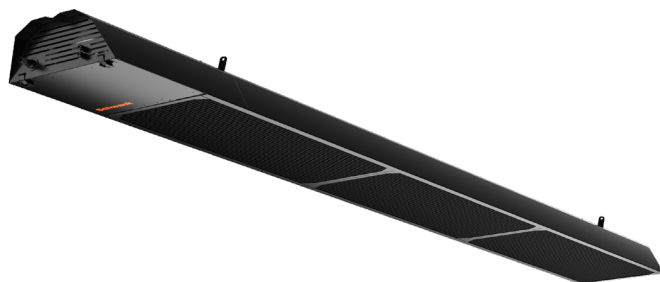
Outdoor Patio Tube Heater

www.schwankgroup.com/products/tube-heaters/phantomschwank

→ Features

The phantomSchwank offers intuitive smart wireless control, versatile mounting options, wind resistance, and EC Motor ultra-quiet operation.

- 35,000 – 115,000 input BTU/HR models
- 12' and 17' heater lengths
- Available in NG 2-stage models, with optional LP conversion kit
- Mounting options range from 8' to 16' heights
- Built-in wireless smart controls, with easy use from mobile app or web browser
- Screwless swing-down cabinet for improved serviceability
- High-efficiency EC Motor with advanced whisper-quiet operation
- Warranty includes; 10-year burner, 10-year tubes, 3-year components



2-Stage Complete Tube Heater Systems

ORDER BY KIT PART #	CAPACITY INPUT: High	CAPACITY INPUT: Low	TUBE LENGTH	FUEL	Conversion Kit #	LIST PRICE
STP-TA05-10-BN	50,000	35,000	10	NG	JS-0554-LL-TP	\$4,699.00
STP-TA08-10-BN	80,000	60,000	10	NG	JS-0554-NL-TP	\$5,349.00
STP-TA11-15-BN	115,000	80,000	15	NG	JS-0554-PL-TP	\$5,799.00

phantomSchwank Accessories

PART #	DESCRIPTION	LIST PRICE
JS-0507-BA-K10	STP mounting kit, 0 degree, 10 ft tube	\$210.00
JS-0507-BA-K15	STP mounting kit, 0 degree, 15 ft tube	\$315.00
JS-0507-BB-K10	STP-TA05/08 mounting kit, 30 degree, 10 ft tube	\$260.00
JS-0507-BC-K10	STP-TA05/08 mounting kit, 45 degree, 10 ft tube	\$270.00
JS-0507-BF-K15	STP-TA11 mounting kit, 30 degree, 15 ft tube	\$390.00
JS-0507-BH-K15	STP-TA11 mounting kit, 45 degree, 15 ft tube	\$405.00
JM-0225-XX	Two-stage rotary control	\$280.00
JL-0771-RC	Type 1 Hose connector - 1/2" x 30"	\$96.00
JS-0554-LL-TP	Conversion kit, two-stage STP 50/35 MBH, NG to LP	\$78.00
JS-0554-NL-TP	Conversion kit, two-stage STP 80/60 MBH, NG to LP	\$78.00
JS-0554-PL-TP	Conversion kit, two-stage STP 115/80 MBH, NG to LP	\$78.00

IO-200 Series

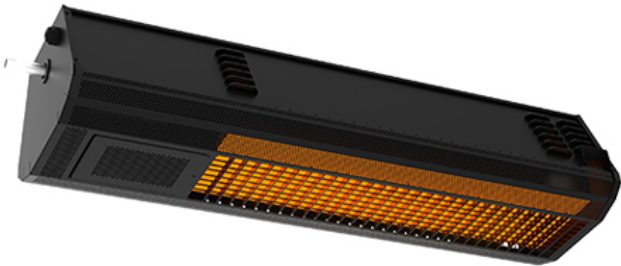
Outdoor Patio High-Intensity Heater

<https://www.infrasave.com/products/io-200-series/>

→

Features

- Best suited for open patios and outdoor spaces
- Single-stage: 23,000 and 35,000 Btuh: NG/NP
- Two-stage 50,000/35,000: NG
- 30.5", 43.5", and 48.25" heater lengths
- 8ft minimum mounting heights
- 24V electrical supply & ignition
- Controls = central or remote control
- All models have a black emissive coated (316) marine grade stainless steel lens - does not oxidize even in harsh environments - lens is black emissive coated.
- Warranty includes; 3-year ceramic burner, 1-year components



Single-stage IO-200 Series

ORDER BY PART #	MODEL	INPUT	GAS	FINISH	LIST PRICE
IO-0212-NG	IO 212	23,000	NG	Marine Grade S/S BLACK - High Temperature	\$2,600.00
IO-0212-LP	IO 212	23,000	LP	Marine Grade S/S BLACK - High Temperature	\$2,600.00
IO-0213-NG	IO 213	35,000	NG	Marine Grade S/S BLACK - High Temperature	\$3,085.00
IO-0213-LP	IO 213	35,000	LP	Marine Grade S/S BLACK - High Temperature	\$3,085.00

Two-stage supremeSchwank

ORDER BY PART #	MODEL	INPUT	GAS	FINISH	LIST PRICE
IO-0252-NG	IO 252	50/35000	NG Only	Marine Grade S/S BLACK - High Temperature	\$3,666.00

IO-100 Series*

Outdoor Patio High-Intensity Heater*

<https://www.infrasave.com/products/io-100->

*Limited quantity available. Check with factory.



→ Features

- Best suited for open patios
- Single-stage: 35,000 and 50,000 Btuh: NG/NP
- Two-stage 50,000/35,000: NG (Switch control required for operating)
- 44" heater lengths
- 9ft minimum overhead mounting heights
- 24V electrical supply & ignition - central or remote control
- Finishes: Black high temperature coated (316) marine grade stainless steel outer assembly - improves aesthetic and helps heater "disappear"
- Finishes: Marine Grade (316) stainless steel for coastal areas or when stainless steel appearance desired
- Warranty includes; 3-year ceramic burner, 1-year components

Single-stage IO-100

ORDER BY PART #	MODEL	INPUT	GAS	FINISH	LIST PRICE
IO-0135-LP	IO-135-SS	35000	NG	BLACK - High Temperature	\$2,869.00
IO-0135-LP	IO-135-SS	35000	LP	BLACK - High Temperature	\$2,869.00
IO-0150-NG	IO-150-SS	50000	NG	BLACK - High Temperature	\$3,101.00
IO-0150-LP	IO-150-SS	50000	LP	BLACK - High Temperature	\$3,101.00
IO-0135-SN	IO-135-SS	35000	NG	Marine Grade Stainless Steel (316)	\$2,869.00
IO-0135-SL	IO-135-SS	35000	LP	Marine Grade Stainless Steel (316)	\$2,869.00
IO-0150-SN	IO-150-SS	50000	NG	Marine Grade Stainless Steel (316)	\$3,101.00
IO-0150-SL	IO-150-SS	50000	LP	Marine Grade Stainless Steel (316)	\$3,101.00

Notes:

1. 24 VAC Transformer not included
2. Gas Conversion Kits for bistroSchwank heaters listed on accessories page

Two-stage IO-100

ORDER BY PART #	MODEL	INPUT	GAS	FINISH	LIST PRICE
IO-0252-NG	IO-252-SS	50/36,500	NG Only	BLACK - High Temperature	\$3,410.00
IO-0152-SN	IO-152-SS	50/36,500	NG Only	Marine Grade Stainless Steel (316)	\$3,410.00

Notes:

1. 24 VAC Transformer not included
2. Gas Conversion Kits for bistroSchwank heaters listed on accessories page

Outdoor/Patio Heater

Accessories



IO-100 Faceplate

Description	Part #	List Price
BistroSchwank Faceplate Assembly Kit (316 S/S)	JP-2100-FP-S	\$386.00
BistroSchwank Faceplate Assembly Kit (316 S/S) Painted-CLack Finish	JP-2100-FP-SP	\$386.00

Gas Conversion Kits

Models	Part #	Description	List Price
IO-100 Series	JX-0253-XH	NG to LP	\$136.00
IO-100 Series	JX-0252-XH	LP to NG	\$136.00
IO-100 Series	JX-0253-XJ	NG to LP	\$136.00
IO-100 Series	JX-0252-XJ	LP to NG	\$136.00
IO-210 Series	JX-0253-XE	NG to LP	\$92.00
IO-210 Series	JX-0252-XE	LP to NG	\$92.00
IO-210 Series	JX-0253-XF	NG to LP	\$92.00
IO-210 Series	JX-0252-XF	LP to NG	\$92.00

NOTES: Models 2152 & 2352 are NG Only, and Not Convertible to LP

IO-200 Series Gas Connection

Description	Part #	List Price
Stainless Steel Flexible Gas Connector 1/2" x 24"	JL-0771-XX	\$61.00



Wall Mount Bracket



Pole Mount Bracket



Wall Mount Arm Kit



Universal Mount Kit

Mounting options

Part #	Model	Item	LIST PRICE
JP-2100-MB	IO-100 & IO-200 Series	Wall mount brackets: Painted steel	\$308.00
JP-2100-MB-SS	IO-100 & IO-200 Series	Wall mount brackets: Stainless steel	\$367.00
JP-2300-MB	IO-100 & IO-200 Series	Wall mount brackets: Painted steel	\$290.00
JP-2300-MB-SS	IO-100 & IO-200 Series	Wall mount brackets: Stainless steel	\$307.00
JP-2300-PK	IO-100 & IO-200 Series	4" Pole Mount Assembly: Painted steel	\$272.00
JP-2300-PK-SS	IO-100 & IO-200 Series	4" Pole Mount Assembly: Stainless steel	\$291.00
JP-2300-MK	IO-100 & IO-200 Series	Wall mount arm kit: Painted steel	\$443.00
JP-2300-MK-SS	IO-100 & IO-200 Series	Wall mount arm kit: Stainless steel	\$443.00
JP-2100-CB-K	IO-100 & IO-200 Series	Universal mount kit: Stainless steel	\$283.00

- Notes:
- 1. Wall Mount: Mount heater at 30° angle, 11.5" from wall and combustible clearance from wall.
 - 2. Wall Mount: 11" x 7" minimum mounting surface footprint.
 - 3. Pole mount: comes with Pole Clamp + Heater Bracket.
 - 4. Wall mount arm kit: locates heater 30 inches from mounting surface at 30° Angle, and hardware needed for fastening to structure is field supplied.

Wireless Control for Single-stage Heaters

Order Items Separately

Part #	Description	List Price
JP-1236-RK	Remote Control Receiver Kit field installs in burner: REQUIRED - Order one for each heater - High-intensity or Tube type	\$297.00
JP-1236-HS	Hand Set Control (four On/Off buttons): REQUIRED - Order one for every four zones: a zone is 1 or more heaters - Control up to 4 individual heaters or up to 4 zones	\$160.00
JP-1236-KT	Wireless Remote Control Keypad Transmitter: OPTIONAL - JP-1236-HS Required for master code programming - Control up to four patio zones - 3 Zones with unique 4 digit pin & 1 zone with direct push button - Weather resistant: Outdoor or indoor installation	\$207.00



JP-1236-RK



JP-1236-HS



JP-1236-KT

Patio Panel - Central Control of Single-Stage Heater Systems

Part #	Model	# of Heaters	List Price
JM-0204-NT	PCP-4	Up To 4	\$496.00
JM-0208-NT	PCP-8	Up To 8	\$623.00
JM-0212-NT	PCP-12	Up To 12	\$720.00

Notes:

1. Single heater per each patioPanel switch is recommended for best comfort control
2. Panel switches have 24 volt capacity
3. 24V transformer not included



Two-Stage Controls: Illuminated Switch Gang



JM-0201-TS



JM-0202-TS



JM-0203-TS

Part #	24VAC Switch	Control	List Price
JM-0201-TS	Single Switch Gang	1 Zone of 1 To 4 Heaters	\$115.00
JM-0202-TS	Double Switch Gang	2 Zones: 2 To 8 Heaters	\$205.00
JM-0203-TS	Triple Switch Gang	3 Zones: 3 To 12 Heaters	\$297.00
JM-0225-XX	2-stage rotary control		\$280.00

Notes:

1. Switch gangs have special "Off, On, On" sequence required for heater operation
2. Do not use a switch with "On, Off, On" sequence

Zone Transformers 24Vac

Part #	Size	# of Heaters	Type	List Price
JL-0776-XX	40 VA Transformer	1	4"x 4" Electrical Box Mount	\$139.00
JL-0778-XX	100 VA Transformer	Up to 4	Closed Type	\$256.00
JL-0779-XX	150 VA Transformer	Up to 6	Closed Type	\$308.00
JL-0780-XX	200 VA Transformer	Up to 9	Closed Type	\$351.00
JL-0781-XX	250 VA Transformer	Up to 11	Closed Type	\$384.00
JL-0781-AA	350 VA Transformer	Up to 16	Closed Type	\$446.00

- Notes for all IO-100 & IO-200 Series Models:
- Each zone transformer is sized to suit the total number of heaters being controlled in the zone.
 - Remote control of 2300 Series heaters requires a 24 volt transformer sized to suit the total number of heaters installed.

- Notes for 24V Transformer sizing guide:
- patioSchwank 2300 Series heaters
 - On a single heater use one 40 VA transformer.
 - On a zone with multiple heaters, use a transformer sized at 40 VA per first heater and a 20 VA per each additional heater.

eSchwank Ghost Series

Indoor/Outdoor Electric Patio Heater

www.schwankgroup.com/electricschwank



Features

The eSchwank Ghost Series offers a carbon fiber element for a longer lifespan, medium wavelength for fast heating, and rapid ramp-up for this electric infrared indoor/outdoor model. Plus, a space-saving mounting design with adjustable angles and a discreet low-profile design.

- 4000W and 6000W wattage models
- 43.25" heater length
- Available in 208V / 240V ~1P
- Mounting options range from 8' to 14' heights
- Indoor or outdoor rated IP65
- Zero emissions - no direct CO2 or NOx emissions
- Warranty includes; 2-year



eSchwank Ghost Series Electric IR Heater

Order by Part #	Description	Electrical		Wattage	List Price
		Voltage	Amps		
ESM-4043-24	eSchwank Ghost Series Electric Infrared Heater: Black Aluminum, 4kW, 240V ~1P; 43.25" Length	240	16.67	4,000	\$1,175.00
	eSchwank Ghost Series Electric Infrared Heater: Black Aluminum, 4kW; 208V~1P; 43.25" Length	208	14.42	3,000	
ESM-6043-24	eSchwank Ghost Series Electric Infrared Heater: Black Aluminum, 6kW, 240V ~1P; 43.25" Length	240	25	6,000	\$1,275.00
	eSchwank Ghost Series Electric Infrared Heater: Black Aluminum, 6kW, 208V ~1P; 43.25" Length	208	21.63	4,500	

eSchwank ES/ESD Series

Indoor/Outdoor Electric Heater

<https://www.infrasave.com/products/electric/>

→ Features

Best suited to enclosed or covered patios, sports venues, balcony or terrace, hobby and garage workshops, warehouse facilities, and small spaces where natural gas or propane supply is impractical.

- Available in 500, 750, 1000, 1500, 2000, 2500, 3000, 4000, 5000, and 6000 Watts
- 120V, 208V, 240V, 277V, and 480V - 1 PH options
- 19.5", 33", 39", 61.25" heater length
- Available in single-stage, two-stage and variable heat options
- Single bulb or dual bulb, mediumwave quartz bulb
- Mounting heights 6ft – 14ft (ceiling, flush mount/recessed, and post mount options)
- Attractive stainless-steel finish – custom colors available in black, white, beige, and mineral bronze (custom colors have a longer lead time contact Schwank factory for pricing)
- Heaters greater than 1500 Watts are for "Commercial Use Only."
- Warranty includes; 2-year components



eSchwank ES/ESD Series IR Heater

Order by Part #	Application	Capacity	Electrical		Model	List Price
			Voltage	Amps		
ES-0519-12	Outdoor / Indoor **	500 Watts	120Vac	4.2	ES-519	\$923.00
ES-0719-12	Outdoor / Indoor **	750 Watts	120Vac	6.3	ES-719	\$923.00
ES-1033-12	Outdoor / Indoor **	1000 Watts	120Vac	8.3	ES-1033	\$953.00
ES-1533-12	Outdoor / Indoor **	1500 Watts	120Vac	12.5	ES-1533	\$999.00
ES-1533-20	Outdoor / Indoor **	1500 Watts	208Vac	7	ES-1533	\$999.00
ES-1533-24	Outdoor / Indoor **	1500 Watts	240Vac	6.3	ES-1533	\$999.00
ES-2039-20	Outdoor / Indoor	2000 Watts	208Vac	10	ES-2039	\$1,045.00
ES-2039-24	Outdoor / Indoor	2000 Watts	240Vac	8.3	ES-2039	\$1,045.00
ES-2539-20	Outdoor / Indoor	2500 Watts	208Vac	12	ES-2539	\$1,076.00
ES-2539-24	Outdoor / Indoor	2500 Watts	240Vac	10.4	ES-2539	\$1,076.00
ES-3033-20	Outdoor / Indoor	3000 Watts	208Vac	14	ESD-3033	\$1,287.00
ES-3033-24	Outdoor / Indoor	3000 Watts	240Vac	12.5	ESD-3033	\$1,287.00
ES-3061-20	Outdoor / Indoor	3000 Watts	208Vac	14	ES-3061	\$1,361.00
ES-3061-24	Outdoor / Indoor	3000 Watts	240Vac	12.5	ES-3061	\$1,361.00

ES-4039-20	Outdoor / Indoor	4000 Watts	208Vac	19	ESD-4039	\$1,287.00
ES-4039-24	Outdoor / Indoor	4000 Watts	240Vac	16.7	ESD-4039	\$1,287.00
ES-4061-20	Outdoor / Indoor	4000 Watts	208Vac	19	ES-4061	\$1,361.00
ES-4061-24	Outdoor / Indoor	4000 Watts	240Vac	16.7	ES-4061	\$1,361.00
ES-5039-20	Outdoor / Indoor	5000 Watts	208Vac	24	ESD-5039	\$1,421.00
ES-5039-24	Outdoor / Indoor	5000 Watts	240Vac	20.8	ESD-5039	\$1,421.00
ES-6061-20	Outdoor / Indoor	6000 Watts	208Vac	28.8	ESD-6061	\$1,633.00
ES-6061-24	Outdoor / Indoor	6000 Watts	240Vac	25	ESD-6061	\$1,633.00

- Notes:
1. Do not use as a residential or household heater. Risk of fire.
 2. Heaters greater than 1500 Watts are for "Commercial Use Only."
 3. ** Typically recommended for indoor use due to the low wattage. Suitable for Residential application.

eSchwank ES/ESD Series

Controls & Accessories



On/Off Controls

Part #	Description	Electrical Voltage	Amps	List Price
JM-4400-XX	Single - Flush Mount c/w S/S Wall Plate and Deep Gang Box	208/240/277V	20 Max	\$236.00
JM-4405-XX	Dual - Flush Mount c/w S/S Wall Plate and Deep Gang Box	208/240/277V	20 Max	\$394.00
JM-4410-XX	Single - Flush Mount c/w Weatherproof Cover	208/240/277V	20 Max	\$251.00
JM-4415-XX	Dual - Flush Mount c/w Weatherproof Cover	208/240/277V	20 Max	\$457.00
JM-4420-XX	Single - Surface Mount c/w Weatherproof Gang Box and Cover	208/240/277V	20 Max	\$290.00
JM-4425-XX	Dual - Surface Mount c/w Weatherproof Gang Box and Cover	208/240/277V	20 Max	\$472.00

Two-stage Controls

Designed for use with dual bulb ESD heaters ONLY. (Ability to turn each bulb on and off independently).



Part #	Application	Electrical Voltage	Amps	List Price
JM-4300-XX	Single Duplex - Flush Mount c/w S/S Wall Plate and Gang Box	208/240/277V	20 Per switch	\$251.00
JM-4305-XX	Dual Duplex - Flush Mount c/w S/S Wall Plate and Deep Box	208/240/277V	20 Per switch	\$417.00
JM-4310-XX	Single Duplex - Flush Mount c/w Weatherproof Cover	208/240/277V	20 Per switch	\$290.00
JM-4315-XX	Dual Duplex - Flush Mount c/w Weatherproof Cover	208/240/277V	20 Per switch	\$472.00
JM-4320-XX	Single Duplex - Surface Mount c/w Weatherproof Box and Cover	208/240/277V	20 Per switch	\$322.00
JM-4325-XX	Dual Duplex - Surface Mount c/w Weatherproof Box and Cover	208/240/277V	20 Per switch	\$521.00

Variable Controls

Designed for use with single bulb heaters up to 3000 watts ONLY (max 15 amps).



Part #	Application	Electrical Voltage	Amps	List Price
JM-4100-XX	Single - Flush Mount c/w S/S Wall Plate and Deep Gang Box	120v	15 Max	\$236.00
JM-4105-XX	Dual - Flush Mount c/w S/S Wall Plate and Deep Gang Box	120v	15 Max	\$394.00
JM-4110-XX	Single - Flush Mount c/w Weatherproof Cover	120v	15 Max	\$251.00
JM-4115-XX	Dual - Flush Mount c/w Weatherproof Cover	120v	15 Max	\$457.00
JM-4120-XX	Single - Surface Mount c/w Weatherproof Gang Box and Cover	120v	15 Max	\$290.00
JM-4125-XX	Dual - Surface Mount c/w Weatherproof Gang Box and Cover	120v	15 Max	\$472.00
JM-4200-XX	Single - Flush Mount c/w S/S Wall Plate and Deep Gang Box	240V	15 Max	\$261.00
JM-4205-XX	Dual - Flush Mount c/w S/S Wall Plate and Deep Gang Box	240V	15 Max	\$417.00
JM-4210-XX	Single - Flush Mount c/w Weatherproof Cover	240V	15 Max	\$290.00
JM-4215-XX	Dual - Flush Mount c/w Weatherproof Cover	240V	15 Max	\$480.00
JM-4220-XX	Single - Surface Mount c/w Weatherproof Gang Box and Cover	240V	15 Max	\$322.00
JM-4225-XX	Dual - Surface Mount c/w Weatherproof Gang Box and Cover	240V	15 Max	\$521.00



Solid State Relay Panel

The Solid State Relay Panel and Zone Analog Controller (with or without optional timer) work together. All Relay Panels are NEMA 4 RATED, and completely weather resistant. Maximum of 9,000 watts @ 240V or 8,000 watts @ 208V per relay.

Part #	Description	List Price
JM-4051-XX	1 Relay Control Panel	\$2,537.00
JM-4052-XX	2 Relay Control Panel	\$3,313.00
JM-4053-XX	3 Relay Control Panel	\$4,192.00
JM-4054-XX	4 Relay Control Panel	\$5,088.00
JM-4055-XX	5 Relay Control Panel	\$6,154.00
JM-4056-XX	6 Relay Control Panel	\$7,206.00

Zone Analog Controller

The ability to adjust heating intensity. All Controllers are NEMA 12 RATED, and can be exposed to mist, but not direct rain. Each Intensity Control Knob can control a maximum of three relays in the Relay Panel.

Part #	Description	List Price
JM-4045-XX	1 Zone Analog Controller with Digital Timer	\$1,696.00
JM-4046-XX	2 Zone Analog Controller with Digital Timer	\$2,136.00
JM-4047-XX	3 Zone Analog Controller with Digital Timer	\$2,592.00
JM-4048-XX	4 Zone Analog Controller with Digital Timer	\$3,070.00

Home Management Relay Panel

Integrate eSchwank ES/ESD Series heaters directly into your home management system. All Relay Panels are NEMA 4 RATED, and completely weather resistant. Note: Requires 0-10V DC Signal.



Part #	Description	List Price
JM-4061-XX	1 Relay Home Management Control Panel	\$4,793.00
JM-4062-XX	2 Relay Home Management Control Panel	\$6,217.00
JM-4063-XX	3 Relay Home Management Control Panel	\$9,784.00
JM-4064-XX	4 Relay Home Management Control Panel	\$11,348.00
JM-4065-XX	5 Relay Home Management Control Panel	\$14,760.00
JM-4066-XX	6 Relay Home Management Control Panel	\$16,338.00

Custom Control Panels

Custom Control Panels for the eSchwank ES/ESD Series heaters for larger quantities or zones of heaters than what our standard control panels can accommodate. Contact your Schwank representative for custom control panel configuration and pricing.

Recessed Mounting Options

ORDER BY PART #	DESCRIPTION	LIST PRICE
JE-0520-33	33" recessed mount frame S/S	\$1,039.00
JE-0520-39	39" recessed mount frame S/S	\$1,039.00
JE-0520-61	61.25" recessed mount frame S/S	\$1,145.00

Color Options

Contact your Schwank representative for information on how to order colored heaters & frame kits.

Part #	Color	List Price
JE-0500-AL	Almond	\$182.00
JE-0500-BE	Beige	\$182.00
JE-0500-BK	Black Textured	\$182.00
JE-0500-BR	Mineral Bronze	\$182.00
JE-0500-BS	Biscuit	\$182.00
JE-0500-WH	White	\$182.00

Recessed Kits Custom Color Options

Part #	Color	List Price
JE-0520-BK	Black	\$234.00
JE-0520-WH	White	\$242.00



eSchwank ES/ESD Series

Electromechanical Relay Package

→ Features

Schwank offers a wide range of custom control options in our industry to meet the needs of any residential or commercial application. The Electromechanical Relay (EMR) package allows you to install and control your heaters using any 24/120V thermostat or our TC Plus controller. It also provide you the capability to control one or more heaters in a specified zone (Zone Heating).

This package includes NEMA 4 rated enclosure kit and appropriate relay depending on the number of heater amp draw.

Note: All electrical parts will be shipped loose and the wiring should be completed in the field by an authorized electrician/contractor. It should be approved by the local jurisdiction



Control Panel Enclosure Kit - NEMA 4 RATED

Part #	Description	List Price
JM-4000-XX	Control Panel Enclosure Kit - NEMA 4 Rated Kit Includes: 1 x Enclosure - NEMA 4 RATED 1 x Terminal Block 1 x Transformer - 40VA	\$935.00

Electromechanical Relays (EMR)

Part #	Description	List Price
JM-4010-XX	18 Amp Relay - 18A/600VAC/24VAC	\$192.00
JM-4015-XX	32 Amp Relay - 32A/600VAC/24VAC	\$318.00
JM-4020-XX	50 Amp Relay - 50A/600VAC/24VAC	\$582.00
JM-4025-XX	75 Amp Relay - 75A/600VAC/24VAC	\$741.00



- Notes:
- 1. Each relay can handle up to 3 heaters
 - 2. Each control panel (enclosure) fits maximum of 2 relays
 - 3. Please refer to the table on the following page to select the appropriate relay size

Heater Capacity (W)	120/1	208/3	Voltage 240/1	277/1	480/3
500	18A	-	-	-	-
750	18A	-	-	-	-
1000	18A	-	-	-	-
1500	32A	18A	18A	-	-
2000	-	32A	18A	18A	18A
2500	-	32A	32A	32A	18A
3000	-	32A	32A	32A	18A
4000	-	50A	50A	32A	32A
5000	-	75A	75A	50A	32A
6000	-	75A	75A	75A	32A

parasolSchwank 4000 Series

Commercial Grade Outdoor Portable Patio Heater

<https://www.infrasave.com/products/4000-series/>

→ Features

The parasolSchwank is a stainless-steel portable outdoor patio heater best suited to enclosed or covered patios, and small spaces where natural gas or propane supply is impractical.

- 90"h x 32"w heater dimensions
- 38,000 Btuh conical burner
- Battery electronic ignitor
- Made with a premier commercial 304 stainless steel
- Uses 16% LESS FUEL USE than 45,000 Btuh heaters, so the fuel tank lasts longer which also saves on labor with fewer tank changes. Housing for 20-30 lb tank (not included)
- Conical burner has inner & outer radiant heat emitters, which increases radiant heat output, and the conical shape directs heat to patio patrons
- Single piece 32" reflector
- The portable model has large 4" diameter wheels for easy portability
- Warranty includes; 1-year (parts) and 3-year (burner and mantle)



Portable 4005-CB Stainless Steel Finish

ORDER PART #	MODEL	FINISH	GAS TYPE	INPUT	LIST PRICE
PS-4005-CB	4005-CB*	Stainless Steel (304)	LP	38,000 Btuh	\$1,229.00

Notes:

1. Ships in two separate cartons: 1: Burner, post, tank cover, base '+ 2: Reflector JP-4070-CB
2. Includes base weight

Base Weight for 4005 Portable Heater

ORDER PART #	MODEL	LIST PRICE
JP-4089-XX	Needed for 4SN5-CB model	\$67.00

MonsterFans (HVLS)

Geared-Drive Series	63
Style Series	64 - 65
Controls & Accessories	66 - 67

MonsterFans Geared-Drive GD Series

HVLS Fan with Geared-Drive Motor

www.schwankgroup.com/GDSeries



Features

MonsterFans GD Series HVLS fan offers diameters ranging from 8ft – 24 ft and delivers maximum speeds of 53-105 RPM. Built with a Helical Inline Reducer motor providing whisper-quiet operation for sensitive applications, and a cool breeze for areas up to 230ft.



- 5 airfoil modulating trailing edge blades
- Whisper-quiet operation with 62-63 dBA
- Optional BMS integration
- Must have VFD for operation **(See accessories page)**
- Unbreakable alloy hub (713 cast aluminum alloy)
- Voltages include:
 - 208–240 VAC, 50/60 Hz, 1 PH;
 - 208–240 VAC, 50/60 Hz, 3 PH;
 - 400–480 VAC, 50/60 Hz, 3 PH;
 - 575–600 VAC, 50/60 Hz, 3 PH;
- Optional wind sensor and mounting kit extensions
- 5-year warranty on motor, gearbox, and control panel Lifetime warranty on blades, hub, and mounting system

MonsterFans GD Series

Model #	Input Power	Diameter	Weight	Airflow (CFM)	Max. Rotational Speed (RPM)	Max. Affected Area (ft)	Motor Power	Noise Level	List Price
MF-GD08-XX	230V/400V/460V/575V	8ft	220 lbs	59,494	105	60	1HP	62.5 dBA	\$8,941.00
MF-GD12-XX	230V/400V/460V/575V	12ft	245 lbs	70,424	105	80	1HP	62.5 dBA	\$8,941.00
MF-GD16-XX	230V/400V/460V/575V	16ft	275 lbs	127,033	80	150	1.5HP	62.7 dBA	\$9,555.00
MF-GD20-XX	230V/400V/460V/575V	20ft	320 lbs	176,200	63	200	2HP	63.4 dBA	\$10,187.00
MF-GD24-XX	230V/400V/460V/575V	24ft	347 lbs	315,026	53	230	2HP	63.4 dBA	\$11,226.00
MF-GD08-YY	575V	8ft	220 lbs	59,494	105	60	1HP	62.5 dBA	\$9,980.00
MF-GD12-YY	575V	12ft	245 lbs	70,424	105	80	1HP	62.5 dBA	\$9,980.00
MF-GD16-YY	575V	16ft	275 lbs	127,033	80	150	1.5HP	62.7 dBA	\$10,603.00
MF-GD20-YY	575V	20ft	320 lbs	176,200	63	200	2HP	63.4 dBA	\$11,226.00
MF-GD24-YY	575V	24ft	347 lbs	315,026	53	230	2HP	63.4 dBA	\$12,267.00

MonsterFans Style Series

Hospitality HVLS Fan

www.schwankgroup.com/StyleSeries



Features

MonsterFans Style Series HVLS fan can be used both indoors and outdoors, with options to individualize your fan with one of our color finishes to style any space.



- Diameter 7–10 feet
- 27,000-45,000 CFM
- 0-120 RPM
- 5 blades
- Transverse Flux Brushless DC motor
- Aluminum alloy hub (AISI 383)
- No VFD required for operation
- Includes: Standard controller and universal mounting kit
- Integrated 1980 lumens LED dimmable light
- Color finishes; Slate, Radiance, Cobalt, Alabaster, Sterling, Onyx
- BMS integration with control upgrade (Contact Schwank for support)
- 3-year warranty on motor, gearbox, and control panel
- Lifetime warranty on blades, hub, and mounting system

Standard
color finishes

- Slate
- Radiance
- Cobalt
- Alabaster
- Sterling
- Onyx

MonsterFans Style Series

Model #	Input Power	Diameter	Weight	Airflow (CFM)	Max. Rotational Speed (RPM)	Max. Affected Area (sq ft)	Color	Noise Level	List Price
MF-ST07-GY	104-277V	7ft	70 lbs	27,000	0-120	1,850	Grey	39 dBA	\$8,591.00
MF-ST08-GY	104-277V	8ft	75 lbs	35,000	0-120	2,100	Grey	39 dBA	\$8,591.00
MF-ST09-GY	104-277V	9ft	80 lbs	39,000	0-120	2,500	Grey	39 dBA	\$8,591.00
MF-ST10-GY	104-277V	10ft	85 lbs	45,000	0-120	2,800	Grey	39 dBA	\$8,591.00
MF-ST07-Bk	104-277V	7ft	70 lbs	27,000	0-120	1,850	Black	39 dBA	\$8,591.00
MF-ST08-BK	104-277V	8ft	75 lbs	35,000	0-120	2,100	Black	39 dBA	\$8,591.00
MF-ST09-BK	104-277V	9ft	80 lbs	39,000	0-120	2,500	Black	39 dBA	\$8,591.00
MF-ST10-BK	104-277V	10ft	85 lbs	45,000	0-120	2,800	Black	39 dBA	\$8,591.00
MF-ST07-BU	104-277V	7ft	70 lbs	27,000	0-120	1,850	Blue	39 dBA	\$8,591.00
MF-ST08-BU	104-277V	8ft	75 lbs	35,000	0-120	2,100	Blue	39 dBA	\$8,591.00
MF-ST09-BU	104-277V	9ft	80 lbs	39,000	0-120	2,500	Blue	39 dBA	\$8,591.00
MF-ST10-BU	104-277V	10ft	85 lbs	45,000	0-120	2,800	Blue	39 dBA	\$8,591.00

MF-ST07-RD	104-277V	7ft	70 lbs	27,000	0-120	1,850	Red	39 dBA	\$8,591.00
MF-ST08-RD	104-277V	8ft	75 lbs	35,000	0-120	2,100	Red	39 dBA	\$8,591.00
MF-ST09-RD	104-277V	9ft	80 lbs	39,000	0-120	2,500	Red	39 dBA	\$8,591.00
MF-ST10-RD	104-277V	10ft	85 lbs	45,000	0-120	2,800	Red	39 dBA	\$8,591.00
MF-ST07-WH	104-277V	7ft	70 lbs	27,000	0-120	1,850	White	39 dBA	\$8,591.00
MF-ST08-WH	104-277V	8ft	75 lbs	35,000	0-120	2,100	White	39 dBA	\$8,591.00
MF-ST09-WH	104-277V	9ft	80 lbs	39,000	0-120	2,500	White	39 dBA	\$8,591.00
MF-ST10-WH	104-277V	10ft	85 lbs	45,000	0-120	2,800	White	39 dBA	\$8,591.00
MF-ST07-SL	104-277V	7ft	70 lbs	27,000	0-120	1,850	Silver	39 dBA	\$8,591.00
MF-ST08-SL	104-277V	8ft	75 lbs	35,000	0-120	2,100	Silver	39 dBA	\$8,591.00
MF-ST09-SL	104-277V	9ft	80 lbs	39,000	0-120	2,500	Silver	39 dBA	\$8,591.00
MF-ST10-SL	104-277V	10ft	85 lbs	45,000	0-120	2,800	Silver	39 dBA	\$8,591.00

MonsterFans

Controls & Accessories



MonsterFans Touch control

This single-point control enables you to control each fan independently or by groupings. The intuitive display allows you to control up to 20 fans with this panel, over 1640' of wire distance. It has CAT-5 daisy chain connections and remote diagnostics. This controller also allows integration with the building management system (BMS).

Part#	List Price
JV-01030-CL	\$6,501.00



MonsterFans Smart control

This automated flexible fan control operates single or multiple units. It continually tracks temperature and humidity and adjusts fan speed accordingly. It also has an integrated light operation to control on/off, and monitors the performance of the fan motor and drive.

Part#	Decription	List Price
JV-01020-CL	Single Fan	\$1,399.00
JV-01025-CL	Multiple Fans (up to 10 - 230V, 460V, 575V)	\$3,160.00

Style Multi-Fan control

For multi-fan control, all fans will work the same. Example: If fan 1 is at 30%, so will fan 5.

Part#	Decription	List Price
	Single Fan	Included with Style fan
JV-01048-CL	Multiple Fans (up to 10 - 230V, 460V, 575V)	\$1,239.00

VFD - Variable Frequency Drive

Part#	Decription	List Price
JV-01010-CL	MonsterFans Drive, VFD 230V IP66 NEMA 4X Rating	\$1,763.00
JV-01015-CL	MonsterFans Drive, VFD 460V IP66 NEMA 4X Rating	\$2,127.00
JV-01050-CL	MonsterFans Drive, VFD 575V 1HP, GD Series (Single Fan - Remote Pad Included)	\$2,382.00
JV-01053-CL	MonsterFans Drive, VFD 575V 1.5HP, GD Series (Single Fan - Remote Pad Included)	\$2,602.00
JV-01056-CL	MonsterFans Drive, VFD 575V 2HP, GD Series (Single Fan - Remote Pad Included)	\$2,602.00
JV-01060-CL	MonsterFans Drive, VFD 575V 1HP, GD Series (with controls above)	\$2,163.00
JV-01063-CL	MonsterFans Drive, VFD 575V 1.5HP, GD Series (with controls above)	\$2,400.00
JV-01066-CL	MonsterFans Drive, VFD 575V 2HP, GD Series (with controls above)	\$2,400.00

Accessories

Part#	Description	List Price
JV-01075-CL	MonsterFans Wind Sensor	\$1,412.00
JV-01070-CL	External VFD Fire Relay - 30A - 24V - one per VFD	\$148.00

Mounting Kits - GD/DD Series

Part#	Description	List Price
JV-0001-MK	MonsterFans DD/GD Series Primary Mounting Kit, 1 FT	\$365.00
JV-0002-MK	MonsterFans DD/GD Series Primary Mounting Kit, 2 FT	\$426.00
JV-0004-MK	MonsterFans DD/GD Series Primary Mounting Kit, 4 FT	\$650.00
JV-0002-MK-E	MonsterFans DD/GD Series Extension Mounting Kit, 2 FT	\$305.00
JV-0004-MK-E	MonsterFans DD/GD Series Extension Mounting Kit, 4 FT	\$365.00
JV-0010-MK	MonsterFans Mounting Kit, OWSJ Bracket (one per truss)	\$520.00
JV-0012-MK	MonsterFans Mounting Kit, Glue Lam Bracket (one per fan)	\$302.00
JV-0014-MK	MonsterFans Mounting Kit, Purlon Bracket (one per truss)	\$520.00
JV-0018-MK	MonsterFans Matching Mount Plate Kit, (one per fan)	\$350.00
JV-0020-MK	MonsterFans Mounting Kit, 8' Steel Mounting Beam	\$740.00
JV-0023-MK	MonsterFans Mounting Kit, 13' Steel Mounting Beam	\$1,049.00

Air Curtains

Commercial Air Curtains

Select10 Series	69
Swift5 Series	70
Breeze9 Series	70
Breeze8/Breeze10 Series	70 - 71

Schwank Air Curtains Select10 Series

Mounting 8'-10'
A stylish and efficient option for your entrances

www.schwankgroup.com/select10-series



→ Features

Schwank Swift10 Series offers flexible mounting up to 10' in commercial entranceways with a sleek modern design to blend into your space. A high-efficiency EC Motor powers this air curtain and is available in electric heated and ambient models.

- Single Phase 208V - Ambient
- Three Phase 208V, 480V, 600V - Electric Heated
- Length options include 36", 60" and 72" models
- Custom color options available (Contact Schwank Rep for support)
- Energy-efficient EC Motor with variable speed control
- Includes: Unit Mounted Controller, Wireless Remote Control, Door Switch, Built in TStat (for Heated Units), Mounting Brackets
- Warranty: 5-year limited warranty coverage

Select10 Series Air Curtain

Part #	Max Height	CFM	Heating Type	Curtain Heat Output		Dimensions (Inches)			Electrics	LIST PRICE
				kW	FLA	Length	Height	Depth		
AC-KA36-23	10'	859	Ambient	-	-	41.3			230/1	\$3,759.00
AC-KA60-23	10'	1592	Ambient	-	-	61.4			230/1	\$4,210.00
AC-KA72-23	10'	1875	Ambient	-	-	80.7			230/1	\$6,357.00
AC-KE36-20-1	10'	859	Electric	2.7/4.1	21	41.3			208/1	\$4,956.00
AC-KE36-20	10	859	Electric	2.7/4.1	7.1	41.3			208/3	\$4,956.00
AC-KE60-20-1	10'	1592	Electric	3.2/6.5	32	61.4	8.3	13.6	208/1	\$5,519.00
AC-KE60-20	10	1592	Electric	3.2/6.5	11.1	61.4			208/3	\$5,519.00
AC-KE72-20	10'	1875	Electric	4.1/8.1	14	80.7			208/3	\$8,666.00
AC-KE36-48	10'	859	Electric	3.3/5	6.6	41.3			480/3	\$5,547.00
AC-KE60-48	10'	1592	Electric	4/8	10.5	61.4			480/3	\$6,117.00
AC-KE72-48	10'	1875	Electric	5/10	13	80.7			480/3	\$8,743.00
AC-KE36-60	10'	859	Electric	3.3/5	5.2	41.3			600/3	\$5,442.00

Surface Mount Air Curtains

Schwank Air Curtains Swift5, Breeze 9, Breeze8 & Breeze10,
www.schwankgroup.com/Air-curtains

Swift5 Series

This is a surface mount model for drive thru windows.
Includes: door switch and wall/ceiling-mount brackets



Part Number	Output Steps (Kw)	Airflow (CFM)	FLA**	Sound Pressure* (dB(A))	Voltage Amperage	Length (in)	Weight (lb)	LIST PRICE
AC-ME32-20-WH	2.5/3.7	200	19	50	208V~/18	32	17	\$1,494.00
AC-ME32-20-BK	2.5/3.7	200	19	50	208V~/18	32	17	\$1,494.00

Note:
Model Available in Black and White options (WH - White. BK - Black).

Breeze9 Series

This is a surface mount ambient (no heat) (120/1/60) model. Includes: wireless remote, door switch and wall-mount brackets



Part Number	Max Height	CFM	Dimensions (Inches)			Model	LIST PRICE
			Length	Height	Depth		
AC-1036-12-BK	9'	1177 / 942	37.2	10.2	8.7	1036	\$1,432.00
AC-1048-12-BK	9'	1648 / 1295	49.2	10.2	8.7	1048	\$1,873.00
AC-1060-12-BK	9'	2119 / 1648	61.2	10.2	8.7	1060	\$2,204.00

Note: Stack models of same series end-to-end for wider doors.

Breeze8 Series *Limited stock-Call the Factory

This is a surface mount air curtain available in ambient (no heat) and electric models. Includes: wired SchwankAir controller, door switch and wall mount brackets

*Note, hot water models have been discontinued.



Part Number	Max Height	CFM	Heating Type	Curtain Heat Output			Dimensions (Inches)					LIST PRICE
				(Btuh)	kW	FLA	Length	Height	Depth	Electrics	Model	
AC-CA45-23	10'	740	N/A	-	-	0.5	45	8	11	230/1/60	2045	\$4,371.00
AC-CA66-23	10'	1060	N/A	-	-	0.7	66	8	11	230/1/60	2066	\$5,076.00
AC-CA87-23	10'	1470	N/A	-	-	1	87	8	11	230/1/60	2087	\$6,457.00
AC-CE45-20	10'	740	Electric	15,370 / 30,735	4.5 / 9	24.5	45	8	11	208/3/60	2045EH	\$4,691.00
AC-CE66-20	10'	1060	Electric	20,490 / 40,980	6 / 12	32.7	66	8	11	208/3/60	2066EH	\$5,294.00
AC-CE87-20	10'	1470	Electric	30,735 / 61,470	9 / 18	49	87	8	11	208/3/60	2087EH	\$8,488.00

AC-CE45-48	10'	740	Electric	15,370 / 30,735	4.5 / 9	10.9	45	8	11	480/3/60	2045EH	\$4,691.00
AC-CE66-48	10'	1060	Electric	20,490 / 40,980	6 / 12	13.5	66	8	11	480/3/60	2066EH	\$5,294.00
AC-CE87-48	10'	1470	Electric	30,735 / 61,470	9 / 18	21.7	87	8	11	480/3/60	2087EH	\$8,488.00
AC-CE45-60	10'	740	Electric	15,370 / 30,735	4.5 / 9	9.3	45	8	11	600/3/60	2045EH	\$4,691.00
AC-CE66-60	10'	1060	Electric	20,490 / 40,980	6 / 12	12.8	66	8	11	600/3/60	2066EH	\$5,294.00
AC-CE87-60	10'	1470	Electric	30,735 / 61,470	9 / 18	18.6	87	8	11	600/3/60	2087EH	\$8,488.00

Note: Stack models of same series end-to-end for wider doors.

Breeze10 Series *Limited stock-Call the Factory

This is a surface mount air curtain available in ambient (no heat) and electric models. Includes: wired SchwankAir controller, door switch and wall mount brackets.

*Note, hot water models have been discontinued.



Part Number	Max Height	CFM	Heating Type	Curtain Heat Output			Dimensions (Inches)					
				(Btuh)	kW	FLA	Length	Height	Depth	Electrics	Model	LIST PRICE
AC-HA51-23	11' 6"	900	Ambient	-	-	1.4	51.2	12	18.4	230/1/60	2551	\$6,351.00
AC-HA72-23	11' 6"	1315	Ambient	-	-	2.0	71.9	12	18.4	230/1/60	2572	\$8,550.00
AC-HA93-23	11' 6"	1,735	Ambient	-	-	2.8	93	12	18	230/1/60	2,593	\$10,478.00
AC-HE51-20	11' 6"	810	Electric	20,473 / 40,946	6 / 12	36.0	51	12	18	208/3/60	2551EH	\$8,340.00
AC-HE72-20	11' 6"	1,165	Electric	40,946 / 61,418	12 / 18	54.0	72	12	18	208/3/60	2572EH	\$11,249.00
AC-HE93-20	11' 6"	1,460	Electric	40,946 / 81,891	12 / 24	72.0	93	12	18	208/3/60	2593EH	\$13,743.00
AC-HE51-48	11' 6"	900	Electric	20,473 / 40,946	6 / 12	13.5	51.2	12	18.4	480/3/60	2551EH	\$8,340.00
AC-HE72-48	11' 6"	1315	Electric	40,946 / 61,418	12 / 18	21.7	71.9	12	18.4	480/3/60	2572EH	\$11,249.00
AC-HE93-48	11' 6"	1735	Electric	40,946 / 81,891	12 / 24	28.9	92.5	12	18.4	480/3/60	2593EH	\$13,743.00
AC-HE51-60	11' 6"	900	Electric	20,473 / 40,946	6 / 12	11.6	51.2	12	18.4	600/3/60	2551EH	\$8,340.00
AC-HE72-60	11' 6"	1315	Electric	40,946 / 61,418	12 / 18	17.3	71.9	12	18.4	600/3/60	2572EH	\$11,249.00
AC-HE93-60	11' 6"	1735	Electric	40,946 / 81,891	12 / 24	23.1	92.5	12	18.4	600/3/60	2593EH	\$13,743.00

Note: Stack models of same series end-to-end for wider doors.

Breeze8/Breeze10 Series Accessories

Part#	Description	List Price
JC-0260-XX	Modbus module & software: control plug-in for BMS control and monitoring	\$268.00
JC-0280-XX	EEPROM Module modulating heat and air flow	\$47.00
JC-0213-XX	Door switch	\$158.00

Infrasave

USA

2 Schwank Way,
Waynesboro, GA
30830

Tel.: 1-877-686-3779
csr@infrasave.com
www.infrasave.com

Canada

5285 Bradco Blvd.,
Mississauga, ON
L4W 2A6

