



# SET - SETU Series & ITT - ITTU Series

## TWO-STAGE LOW INTENSITY TUBE TYPE INFRARED HEATERS

### For Indoor Use



## INSTALLATION / OWNER'S MANUAL



**WARNING** Improper installation, adjustment, alteration, service or maintenance can cause property damage, injury or death. Read the installation and operating and maintenance instructions thoroughly before installing or servicing this equipment.

### SAFETY ALERT:

This heater must be installed and serviced only by a trained gas service technician. Failure to comply could result in personal injury, death, fire and/or property damage.

Do not store or use gasoline or other flammable vapours and liquids in the vicinity of this or any other gas fired appliance.

### IF YOU SMELL GAS:

- Extinguish any open flame
- Do not attempt to light this or any other appliance
- Don't touch any electrical switch, or telephone
- Immediately call your gas supplier from a neighbor's phone
- Follow any and all instruction from your gas supplier
- If your gas supplier is not available, call the fire department



**FIELD CONVERTIBILITY:**  
This appliance is field convertible to LP gas.

**Keep this manual in a secure place .**  
**Record for future reference:**

Model #: \_\_\_\_\_

Serial #: \_\_\_\_\_

(located on heater rating label)



**NOTICE:**

*This manual is current for the product with which it is packaged. Occasional revision of the product Certification Standard and/or Codes may require changes to the product and/or this manual.*

*This publication, or parts thereof, may not be reproduced in any form, without prior written consent from The Manufacturer. Unauthorized use or distribution of this publication is strictly prohibited.*

**Schwank Group**

Schwank and InfraSave brands

*5285 Bradco Boulevard*

*Mississauga, Ontario, L4W 2A6*

*PO Box 988, 2 Schwank Way*

*Waynesboro, Georgia 30830*

**Customer & Technical Services**

*Phone: 877-446-3727*

*Fax: 866-361-0523*

*e-mail: [csr@schwankgroup.com](mailto:csr@schwankgroup.com)*

**[www.schwankgroup.com](http://www.schwankgroup.com)**

**[www.infrasave.com](http://www.infrasave.com)**

# SET / SETU and ITT / ITTU SERIES GAS FIRED INFRARED LOW INTENSITY TUBE TYPE

## TABLE OF CONTENTS

| TOPIC   | ..... PAGE | TOPIC   | .....PAGE |
|---|------------|---|-----------|
| <b><u>IMPORTANT INFORMATION - READ FIRST</u></b>            |            |   |           |
| APPLICATION .....   | 4          | 14. ELECTRICAL AND THERMOSTAT .....                                 | 32        |
| HEATER EXPANSION .....                                      | 5, 31      | 15. HIGH ALTITUDE INSTALLATION.....                                 | 32        |
| GAS CONNECTION .....  | 5, 31      | 16. LIGHTING INSTRUCTIONS .....                                     | 32        |
| VENTING .....   | 5, 26      | 17. RECOMMENDED MAINTENANCE .....                                   | 32        |
| START UP 'SMOKE' .....                                      | 5          | 18. WIRING DIAGRAM: FENWAL DSI<br>2-STAGE 24 VOLT THERMOSTAT .....  | 33        |
| THERMOSTAT SETTING / COMFORT .....                          | 5          | 19. WIRING DIAGRAM MULTIPLE HEATERS<br>PER 2-STAGE THERMOSTAT ..... | 34        |
| TUBE 'GLOW' .....   | 6          | 20. FENWAL DSI: SEQUENCE OF OPERATION.....                          | 35        |
| CLEARANCE TO COMBUSTIBLES.....                              | 6          | SPARK IGNITER ADJUSTMENT .....                                      | 37        |
| Clearances Figure & Table .....                             | 7          | 21. TROUBLESHOOTING GUIDE: FENWAL DSI.....                          | 38        |
| STACKING HEIGHT SIGN .....                                  | 8          | 22. TROUBLESHOOTING GUIDE: HEATER .....                             | 39        |
| 1. LABOR REQUIREMENTS .....                                 | 9          | 23. START- UP / COMMISSIONING SHEET .....                           | 41        |
| 2. INSTALLATION IN AIRCRAFT HANGARS .....                   | 9          | <b><u>PRODUCT DIMENSIONS &amp; DATA</u></b>                         |           |
| 3. INSTALLATION IN COMMERCIAL<br>GARAGES.....               | 9          | 24. HEATER DIMENSIONS / WEIGHTS .....                               | 43        |
| 4. INSTALLATIONS OTHER THAN<br>SPACE HEATING .....          | 9          | INSTALLATION DIMENSIONS .....                                       | 44        |
| 5. PRE-INSTALLATION SURVEY .....                            | 10         | 26. BURNER / TUBE KIT ASSEMBLY CHART<br>STRAIGHT TUBE SYSTEM .....  | 45        |
| 6. MOUNTING CLEARANCES .....                                | 11         | 'U' TUBE SYSTEM .....   | 46        |
| SERVICE CLEARANCE.....                                      | 11         | 27. TURBULATORS .....   | 47        |
| HEATER PLACEMENT GUIDELINES.....                            | 12         | TURBULATOR ILLUSTRATION .....                                       | 48        |
| 7. SYSTEMS WITH 90° & 180° ELBOWS .....                     | 12         | 28. HIGH ALTITUDE & ORIFICE CHART .....                             | 49        |
| ELBOW KIT DIMENSIONS .....                                  | 13, 50     | 29. OPTIONAL ACCESSORIES.....                                       | 50 - 52   |
| 8. SUSPENDING THE SYSTEM.....                               | 14         | 30. BURNER PARTS LIST .....   | 53 - 56   |
| 9. BURNER & TUBE INSTALLATION<br>STRAIGHT TUBE SYSTEM ..... | 15         | 30. TUBE SYSTEM PARTS LIST .....                                    | 57        |
| 'U' TUBE SYSTEM.....  | 17         | WARRANTY STATEMENT.....   | BACK PAGE |
| SPECIAL COUPLING - 175 & 200 Mbh .....                      | 19         |   |           |
| 10. REFLECTOR INSTALLATION .....                            | 20         |   |           |
| 11. FLUE VENTING .....                                      | 22         |   |           |
| 12. COMBUSTION AIR DUCT .....                               | 28         |   |           |
| 13. GAS SUPPLY .....  | 29         |   |           |
| HEATER EXPANSION.....                                       | 30         |   |           |
| FLEXIBLE GAS CONNECTION.....                                | 31         |   |           |



## WARNING



Improper installation, adjustment, alteration, service or maintenance can cause property damage, injury or death. Read and understand this installation and operation manual thoroughly prior to assembly, installation, operation or service to this appliance.



This heater must be installed and serviced only by a trained gas service technician.

Do not store or use gasoline or other flammable vapours and liquids in the vicinity of this or any other gas fired appliance.



Failure to comply could result in personal injury, death, fire and/or property damage.

Do not store or use gasoline or other flammable vapours and liquids in the vicinity of this or any other gas fired appliance.

This appliance may have sharp edges and corners. Wear protective clothing such as gloves and protective eye wear when servicing this or any other appliance.

## APPLICATION

A gas-fired radiant tube heater may be installed for heating of commercial / industrial non-residential spaces. It is beyond the scope of these instructions to consider all conditions that may be encountered. Installation must conform with all local building codes or, in the absence of local codes, with the National Fuel Gas Code, ANSI Z223.1/NFPA 54 in the U.S.A. or the Natural Gas and Propane Installation Code, CSA B149.1 in Canada. The latest edition Electrical Code ANSI/NFPA N0 70 in the U.S.A. and PART 1 CSA C22.1 in Canada must also be observed.

Installation of a gas fired tube heater must conform to all heating installation design procedures including clearance to combustibles, connection to the gas and electrical supplies, and ventilation.

This heater is not for installation in a Class 1 or Class 2 explosive environment, nor a residence. If installation of this equipment is in question, consult with local authorities having jurisdiction (Fire Marshall, labor department, insurance underwriter, or others).

Revisions to codes and/or standards, may require revision to equipment and installation procedures. In case of discrepancy, the latest codes, standards, and installation manual will take priority over prior releases.

**Models SET and ITT** may be installed for two stage heating of commercial / industrial non-residential **indoor spaces**.

### **MODELS AVAILABLE FOR OTHER APPLICATIONS:**

**Models SETW / ITTW** (two stage) and **SPW-JZ / IWP** (single stage) have a powder coated water resistant burner enclosure and may be installed for heating of commercial / industrial non-residential **outdoor spaces and wet indoor environments**.

**Models STW-JZ and IW** have a stainless steel water resistant burner enclosure and may be installed for heating of commercial / industrial non-residential **outdoor spaces and harsh wet indoor environments**.



## WARNING

### Heater Expansion



It is a normal condition that during heat-up and cool-down a tube heater will expand and contract. Allowances for heater expansion must be made in the gas connection, venting and combustion air ducting. Improper installation, alteration, or adjustment can result in property damage, injury or death. **Refer to Section 13**



## WARNING

### Gas Connection



Improper installation, connection, or adjustment can result in property damage, toxic gases, asphyxiation, injury or death. Using an approved flexible gas connector in the USA or Type 1 hose connector in Canada, the gas supply to the heater must be connected and tested in accordance with all local, state, provincial, and national codes (ANSI Z223.1/NFPA 54 in USA; B149.1 in Canada) and as indicated in this manual. **Refer to Section 13**



## WARNING

### Venting



Inadequate venting of a heater may result in asphyxiation, carbon monoxide poisoning, injury or death. This heater may be directly or indirectly vented from the space. Venting must be in accordance with all local, state, provincial, and national codes (ANSI Z223.1/NFPA 54 in USA; B149.1 in Canada) and as indicated in this manual.



## WARNING

### Start-Up 'SMOKE' Condition

During start up, the heating of material coatings used in the production process of tubes and reflectors will create smoke during the initial period of operation. This condition is normal and temporary .

Ensure that there is sufficient ventilation to adequately clear any smoke from the space.

Notify site and safety personnel to ensure that alarm systems are not unduly activated.



## IMPORTANT

### THERMOSTAT SETTING FOR COMFORT

Infrared radiant (IR) heating system provide comfort with the effect of radiant heat and ambient air heat.

If your IR system is controlled with a TruTemp or ThermoControl Plus controller that senses radiant heat, then set the control to the desired comfort temperature (ie: 65°; 68°; 20°C).

If your IR system is controlled with a standard 24V or 120V thermostat that senses only air temperature, then start with a thermostat setting that is 5° to 7°F (3° to 5°C) lower than the desired comfort temperature. Some trial and error setting may be required to 'fine tune' the comfort temperature that best suits the site and provides most economical operation.

Unoccupied (night) set-back of 9°F (5°C) is recommended. Do not turn the system 'Off'.



## WARNING

### Tube “GLOW”

It is a normal condition that the combustion tube (1st tube) can appear to “glow red”. For inputs up to 150,000 Btuh, the top surface of the tube can appear red where heat is trapped between the reflector and the tube. The stainless steel tube used for inputs 175,000 and greater can appear to entirely glow red. The tube material is designed into the heater because it can withstand the high temperature of combustion, and the “red glow” is a normal occurrence.



## WARNING

### Clearance to combustibles

Location of flammable or explosive objects, liquids or vapors close to the heater may cause fire or explosion and result in property damage, injury or death. Do not use, store or locate flammable or explosive objects, liquids or vapors in proximity of the heater.



**The clearance to combustible material represents the minimum distance that must be maintained between the outer heater surface and a nearby surface. The stated clearance to combustibles represents a surface temperature of 90F° (50C°) above room temperature. It is the installer’s responsibility to ensure that building materials with a low heat tolerance which may degrade at lower temperatures are protected to prevent degradation. Examples of low heat tolerance materials include vinyl siding, fabrics, some plastics, filmy materials, etc.**

In locations used for the storage of combustible materials, signs must be posted to specify the maximum permissible stacking height to maintain the required clearances from the heater to the combustibles. Such signs must either be posted adjacent to the heater thermostats or in the absence of such thermostats in a conspicuous location. In addition to stored or stationary material, consideration must also be given to moveable objects such as cranes, vehicles, and overhead doors, and structural objects such as sprinkler heads, electrical and gas lines, and electrical fixtures.

It is beyond the scope of these instructions to consider all conditions that may be encountered. Consult local authorities such as the Fire Marshall, insurance carrier, or safety authorities if you are uncertain as to the safety or applicability of the proposed installation.

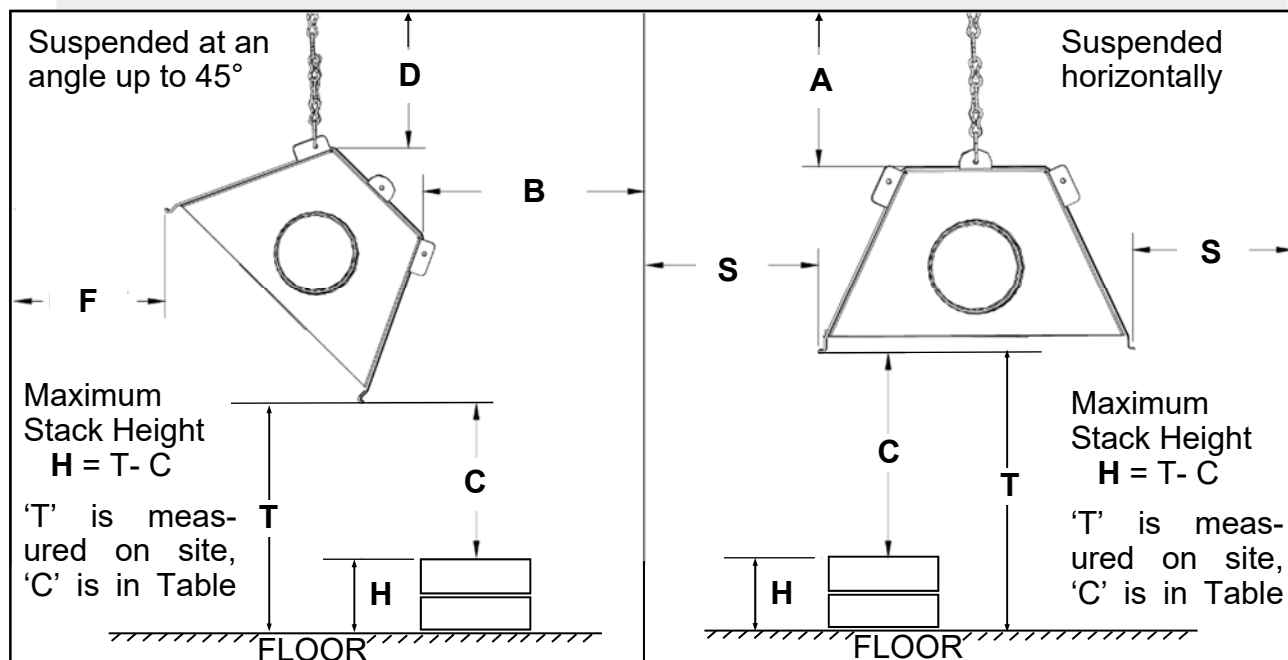
**Refer to Figure 1 and Table 1 for the certified clearances to combustibles for the appropriate model input/size.**

**FIGURE 1 MINIMUM CLEARANCES TO COMBUSTIBLES\*** - refer to Table 1 for values

**NOTE:** A 'PEEL & STICK' SIGN IS SUPPLIED: USE AN INDELIBLE MARKER TO ENTER VALUES 'H', 'S', 'F', & 'B' ON .



POST THE SIGN ADJACENT TO THE HEATER THERMOSTAT OR IN A PROMINENT LOCATION. See next page for details.



**TABLE 1 MINIMUM CLEARANCES TO COMBUSTIBLES\***

| MODEL<br>SET(U) / ITT(U)<br>"Straight" &<br>"U-Tube" | HORIZONTAL       |                  |                  | ANGLE UP TO 45 DEGREES |                  |                  |                  |
|--|------------------|------------------|------------------|------------------------|------------------|------------------|------------------|
|  | TOP              | SIDE             | BELOW            | TOP                    | REAR             | FRONT            | BELOW            |
|  | A<br>inches (cm) | S<br>inches (cm) | C<br>inches (cm) | D<br>inches (cm)       | B<br>inches (cm) | F<br>inches (cm) | C<br>inches (cm) |
| <b>200,000/140,000</b>                               | 7" (18)          | 22" (56)         | 68" (172)        | 7" (18)                | 1" (2.5)         | 57" (145)        | 68" (172)        |
| <b>175,000/125,000</b>                               | 6.5" (16.5)      | 20" (51)         | 68" (172)        | 6.5" (16.5)            | 1" (2.5)         | 47" (119)        | 68" (172)        |
| <b>155,000/110,000</b>                               | 6" (15)          | 19" (48)         | 64" (163)        | 6" (15)                | 1" (2.5)         | 44" (112)        | 64" (163)        |
| <b>130,000/90,000</b>                                | 4" (10)          | 11" (28)         | 60" (152)        | 5" (13)                | 1" (2.5)         | 35" (89)         | 56" (142)        |
| <b>110,000/75,000</b>                                | 3" (8)           | 10" (25)         | 60" (152)        | 4.5" (11)              | 1" (2.5)         | 26" (66)         | 54" (137)        |
| <b>80,000/60,000</b>                                 | 2.5" (6)         | 6" (15)          | 42" (107)        | 3.5" (9)               | 1" (2.5)         | 23" (59)         | 38" (97)         |

**\*NOTE: Clearances are measured from the reflector.**

The clearance to combustible materials represents the minimum distance that must be maintained between the heater and a nearby surface. **The stated clearance to combustibles represents a surface temperature of 90F° (50C°) above room temperature.**

**It is the installer's responsibility to ensure that building materials with a low heat**

tolerance which may degrade at lower temperatures are protected to prevent degradation. Examples of low heat tolerance materials include vinyl siding, fabrics, some plastics, filmy materials, etc.

VENT END CLEARANCE: Clearances from the vent pipe are determined by local or national installation codes, but must not be less than 6 inches (15 cm). For 'unvented' installation, a minimum distance of 24 inches (61 cm) is required from the end of heater to a combustible surface.



## WARNING

In locations used for the storage of combustible materials: **Signs must be posted** specifying the *maximum permissible stacking height* to maintain the required clearances from the heater to the combustibles.

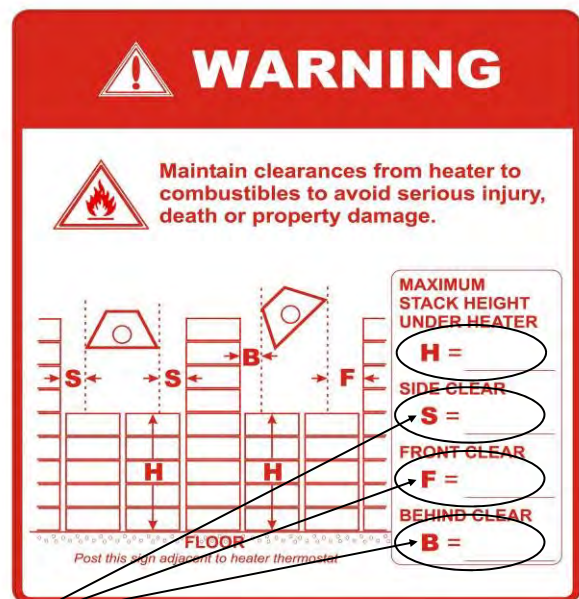
The signs must be posted either adjacent to the IR heating system thermostats or in the absence of such thermostats, in a conspicuous place.

For your convenience a “peel and stick” sign is provided with this heater. Use a permanent marker to record the required dimensions on the sign.

To calculate the value 'H': ( $H = T - C$ )

- Measure the on site distance between bottom of the heater and the floor = 'T' inches (cm).
- Refer to Table 1 to get the value 'C' that corresponds to the model you are installing
- Subtract the clearance below the heater 'C' from 'T' to get value 'H'.
- Enter this value 'H' on the sign.

Refer to the information for the heater model being installed in Figure 1 and Table 1 to get the values for dimensions 'S', 'F' and 'B'.



Post this sign as instructed above.



## 1. LABOR REQUIREMENTS

Two persons are required to safely install this equipment. Wear gloves and other required safety protection.

## 2. INSTALLATION IN COMMERCIAL AIRCRAFT HANGARS

Low intensity radiant tube heaters are suitable for use in aircraft hangars when installed in accordance with the latest edition of the Standard for *Aircraft Hangars*, ANSI/NFPA No 409 in the USA, or the Canadian *Natural Gas and Propane Installation Code*, B149.1.

- A. A minimum clearance of 10 ft (3 m) above either the highest fuel storage compartment or the highest engine enclosure of the highest aircraft which may occupy the hangar. The clearance to the bottom of the heater shall be measured from the upper surface of either the fuel storage compartment or the engine enclosure, whichever is higher from the floor.
- B. A minimum clearance of 8 ft (2.4 m) must be maintained from the bottom of the heater to the floor in other sections of the aircraft hangar, such as offices and shops, which communicate with areas for servicing or storage. Refer to Section 1 for proper mounting clearances to combustibles.
- C. Heaters must be located so as to be protected from damage by aircraft and other objects, such as cranes and movable scaffolding.
- D. Heaters must be located so as to be accessible for servicing and adjustment.

## 3. INSTALLATION IN COMMERCIAL GARAGES AND PARKING STRUCTURES

Low Intensity Heaters are suitable for use in commercial garages when installed in accordance with the latest edition of the Standard for *Parking Structures*, ANSI/NFPA 88A, or the Standard for *Repair Garages*, ANSI/NFPA No. 88B, or the Canadian *Natural Gas and Propane Installation Code*, B149.1.



### **WARNING**

An overhead heater shall be located high enough to maintain the minimum distance to combustibles, as shown on the heater rating plate, from the heater to any vehicles parked below the heater.

Overhead heaters shall be installed at least 8 ft (2.4 m) above the floor.

## 4. INSTALLATIONS OTHER THAN SPACE HEATING

Use for process or other applications that are not space heating will void the C.S.A. certification and product warranty. Process application requires field inspection and/or certification by local authorities having jurisdiction.



## WARNING



Improper installation, adjustment, alteration, service or maintenance can cause property damage, injury or death. Read and understand this installation and operation manual thoroughly prior to assembly, installation, operation or service to this appliance.



This heater must be installed and serviced only by a trained gas service technician. Do not store or use gasoline or other flammable vapours and liquids in the vicinity of this or any other gas fired appliance.



Failure to comply could result in personal injury, death, fire and/or property damage. Do not store or use gasoline or other flammable vapours and liquids in the vicinity of this or any other gas fired appliance.

### 5. PRE INSTALLATION SURVEY

It is recommended that a full heating design including heat loss calculation be conducted on the structure or area to be heated. Heater sizing and placement must consider available mounting height, sources of greatest heat loss, and the certified clearances to combustibles with respect to stored material, moveable objects (cranes, vehicles, lifts, overhead doors, etc), sprinkler system heads, and other obstructions on the site. Consideration must also be given to vent / duct placement and the allowable combined lengths of vent and duct. Carefully survey the area to be heated, and for best results place burner and combustion chamber in the coldest area(s) .

Installation must conform with all local, state, provincial and national code requirements including the current latest edition ANSI Z223.1 (NFPA 54) in the U.S.A. and B149.1 installation code in Canada, for gas burning appliances and equipment. The latest edition Electrical Code ANSI/NFPA N0 70 in the U.S.A. and PART 1 CSA C22.1 in Canada must also be observed.

The heating system must have gas piping of the correct diameter, length, and arrangement to function properly. For this reason, a layout drawing is necessary.

## **6. MOUNTING CLEARANCES**

This heater must be mounted with at least the minimum clearances between the heater and combustibles as shown in FIG.1, TABLE 1. It is the installer's responsibility to ensure that building materials with a low heat tolerance which may degrade at lower temperatures are protected to prevent degradation. Examples of low heat tolerance materials include vinyl siding, fabrics, some plastics, filmy materials, etc.

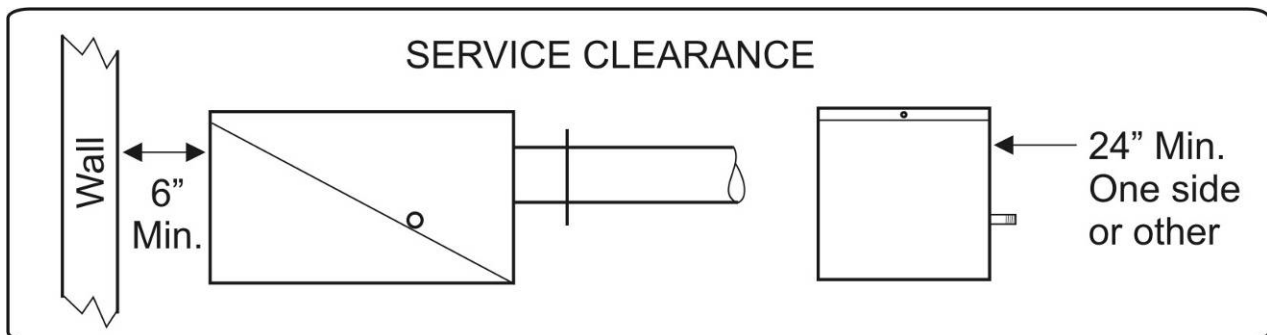
Positioning of lights, sprinkler heads, overhead doors, storage areas, gas and electrical lines, parked vehicles, cranes and any other possible obstruction or hazard must be evaluated prior to installation.

**Ensure adequate clearance around the air intake at the burner to allow sufficient combustion air supply to the heater.**

**6A. SERVICE CLEARANCE:** The lower 'jaw' of the burner cabinet swings down to provide convenient service access to burner components. Provide a minimum clearance from any wall or obstruction of 6 inches (15 cm) to the access end of the burner housing, and a minimum of 24 inches (61 cm) to any ONE side to allow servicing of burner, blower and controls. (see Figure 2) - the minimum clearances to combustibles must always be maintained.

For guidelines to heater placement refer to TABLE 2 (below).

**FIGURE 2**



**TABLE 2: GUIDELINES FOR HEATER PLACEMENT**

| MODEL<br>“Straight” or<br>“U-Tube” | GUIDELINE<br>MOUNTING<br>HEIGHT<br>ft (m) | MAXIMUM<br>DISTANCE<br>BETWEEN<br>HEATERS<br>ft (m) | DISTANCE – OUTSIDE WALL<br>TO HEATER LONG AXIS<br>(PARALLEL TO WALL) IN “FEET” |   |
|------------------------------------|---|---|--|---|
|                                    |   |   | HORIZONTAL<br>ft (m)   | ANGLE   |
| SET / ITT 200/140                  | 18 – 25 (6 - 8)                           | 50 (15)   | 17 – 25 (5 - 8)  | MINIMUM =<br>COMBUSTIBLE<br>CLEARANCE<br>BEHIND<br>(refer to Table 1) |
| SET / ITT 175/125                  | 18 – 25 (6 - 8)                           | 50 (15)   | 17 – 25 (5 - 8)  |   |
| SET / ITT 155/110                  | 16 – 21 (5 - 7)                           | 45 (14)   | 15 – 20 (5 - 7)  |   |
| SET / ITT 130/90                   | 15 – 21 (5 - 7)                           | 40 (12)   | 15 – 20 (5 - 7)  |   |
| SET / ITT 110/75                   | 13 – 19 (4 - 6)                           | 35 (11)   | 13 – 18 (4 - 6)  |   |
| SET / ITT 80/60                    | 10 – 16 (3 - 5)                           | 30 (9)  | 12 – 16 (4 - 5)  |   |

\* GUIDELINE MOUNTING HEIGHTS are typical to provide optimum comfort in general space heating applications. Variance to these typical heights can occur in some applications:

- Higher mounting heights due to structure or application requirements
- Lower mounting heights for area or ‘spot’ heat, or in areas with greater infiltration losses (near overhead doors, etc)



**IMPORTANT:** Single or multiple heater placement must be such that continuous operation of heater(s) will not cause combustible material or materials in storage to reach a temperature in excess of the ambient temperature in the space **plus** 90F° (50C°).

**It is the installer’s responsibility to ensure that building materials with a low heat tolerance which may degrade at lower temperatures are protected to prevent degradation. Examples of low heat tolerance materials include vinyl siding, fabrics, some plastics, filmy materials, etc.**

**Refer to “Clearance to Combustibles” information on pages 6 to 8, and Figure 1 and Table 1.**

## **7. SYSTEMS INCORPORATING 90° ELBOWS AND 180° ELBOWS**

The radiant tube heater can be installed in configurations as illustrated in FIGURE 4. (below) with a maximum of two 90° elbows per heater. The use of elbows reduces the total maximum vent allowable. (See Section 11 : Flue venting)

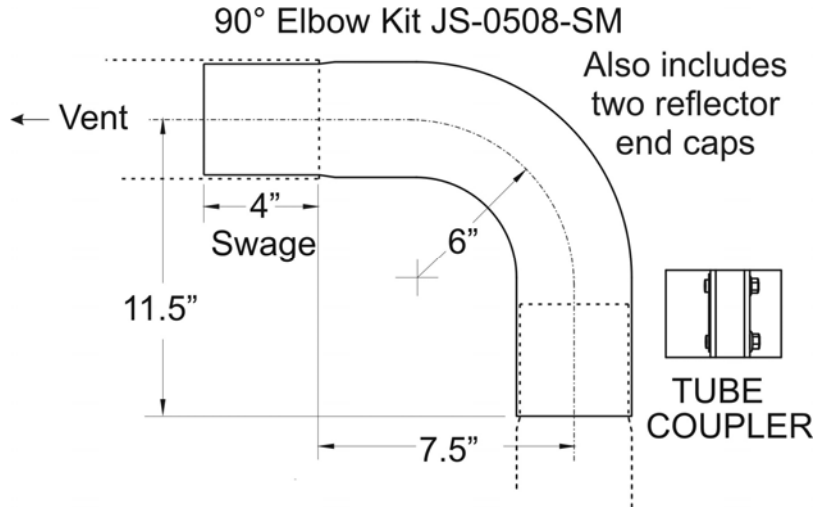
90° elbows (JS-0528-SM) are shipped as a kit with one coupler, and two reflector end caps.

The SET / ITT is available in a “U-Tube” model - SETU / ITTU - using a 180° turn box. A double wide reflector covers the double tube run. Alternately, for a 180° elbow, order 2 x 90° kits that connect to create a 180°.

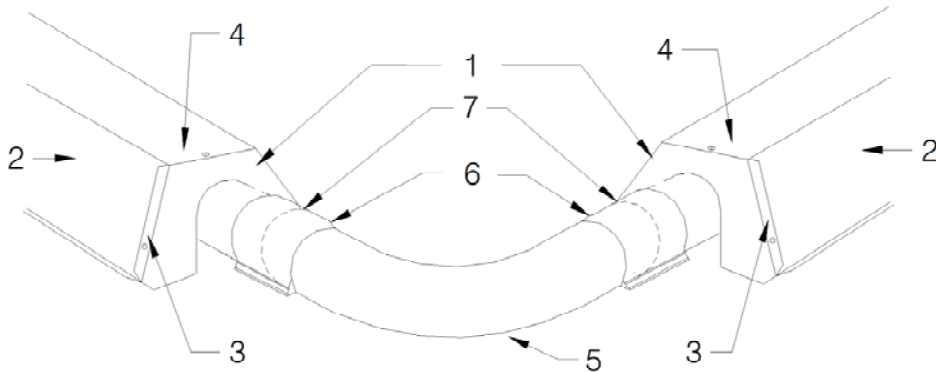


**IMPORTANT: Elbow Location / Input:** A minimum run of straight radiant tube must be connected to the burner before any elbow as follows: Inputs 200 (60 kW) and 175 Mbh (50 kW) = 25 ft (7.6 m); Input 155 Mbh (45 kW) = 20 ft (6 m); Inputs 130 Mbh (38 kW) and 110 Mbh (32 Kw) = 15 ft (4.6 m); and Input 80 Mbh (23 kW) a minimum of 10 ft (3 m) straight tube before elbow.

**FIGURE 3 SYSTEM ELBOW KIT**



**FIGURE 4 90° ELBOW INSTALLATION**



- |   |  |
|---|--|
| 1 End-Cap                               | 5 90° Elbow  |
| 2 Reflector                             | 6 Tube Coupler   |
| 3 End Cap Flange <u>OVER</u> Reflector  | 7 Unswaged end of elbow and tube (swage of previous tube or elbow inserted). |
| 4 End Cap Flange <u>UNDER</u> Reflector |  |

## 8. SUSPENDING THE SYSTEM - GENERAL



Inadequate or improper suspension of the tube heater can result in collapse of the system, property damage, and personal injury or death.

It is the installer's responsibility to ensure that the hardware and structural supports from which the heater is suspended are sound and of adequate strength to support the weight and expansion forces of the heater.

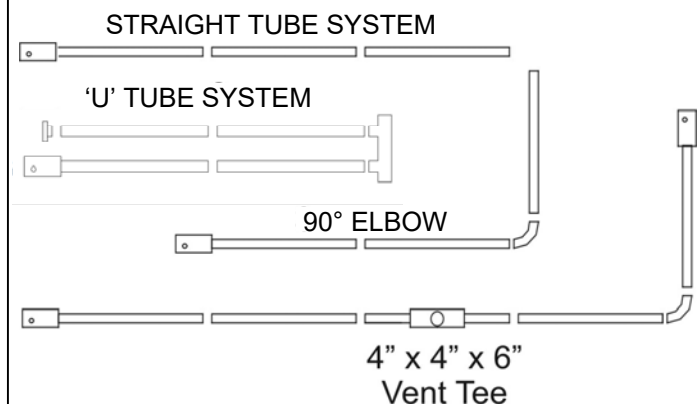
Consider that the heater will expand in length as much as 1/2 inch (12.5 mm) or more for every 10 ft (3 m) of system length – typically the greater the firing rate, the greater the expansion.

**Refer to Sections 13 & 14**

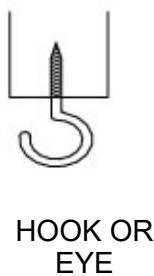
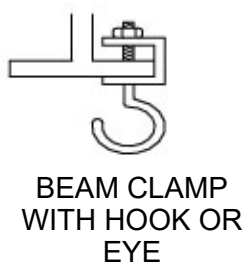
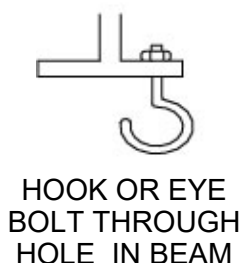
- 1) Survey the available structural supports, considering the system configuration and heat requirements of the area to establish the optimum heater location.
  - a) Locating a heater directly under joists or beams, or installing supplemental steel support rail or angle iron can substantially reduce labor and materials
- 2) Hardware with a minimum 60 lb. (30 kg) work load must be used at each heater suspension point. A #8 Jack Chain or equivalent is typically used for suspending the heater.
  - a) Connect to the structure using typical hardware as illustrated in FIGURE 6 (below) or by other mechanically sound means
  - b) If rigid devices such as 3/8" threaded rods are used for suspension, swing joints or other means must be provided to allow for system expansion - approximately 1/2 inch to 1 inch for every 10 ft (1 cm to 2.5 cm for every 3 m) of system length.
- 3) Tube system hangers must be located:
  - i: Straight in line
  - ii: At a common height (level)

NOTE: It is important that the tubes in the system are installed in alignment horizontally (level) and vertically (in line) – this will ensure system integrity

**FIGURE 5 SYSTEM CONFIGURATIONS**



**FIGURE 6 TYPICAL MOUNTING HARDWARE**



NOTE: It is the installer's responsibility to ensure that mounting hardware and fastening to structure are of sufficient strength to support the system.

## 9 INSTALLATION OF HANGERS, TUBES AND BURNER

### TURBULATOR NOTES:

- See Section 26, pages 45-46 for details on turbulator sizes and location in system

#### Prior to Installation:

- **80 / 60 x 30 ft:** Remove and discard 60" turbulator from the second tube
- **200 / 140 x 60 ft :** Remove and discard 40" turbulator from the upstream end of last tube

### 9.1 SET / ITT STRAIGHT TUBE SYSTEM ~ BURNER AND TUBE INSTALLATION

1) Install Hangers in alignment and suspended at the same height:

- i: No closer than 3" (5 CM) and no further than 5" (10 cm) from the burner/tube flange
- ii: Between 6" (15 cm) and 24" (61 cm) either side of a tube connection in the system

2) Install first aluminized tube section on to first two wire hangers.

**NOTE: INSTALL THE FIRST AND SECOND TUBES (FROM BURNER END) WITH THE WELDED SEAM ALONG THE TUBE LENGTH FACING DOWNWARD**

3) **FLAME RECTIFIER:** Remove & retain sight glass (2 screws), then install Flame Rectifier into the flanged end of first tube (Flame Rectifier **not required for SET/ITT-80/60**), See Fig. 8A.

4) Bolt burner to flange on first tube section, Fig. 8B. Install igniter in first tube, Fig. 8A.

**IMPORTANT NOTE: Models with inputs 175,000 & 200,000 refer to section 9.3**

5) Slide a Torctite tube coupler over the swaged end of the first tube, then join the second tube over the swage in the first tube

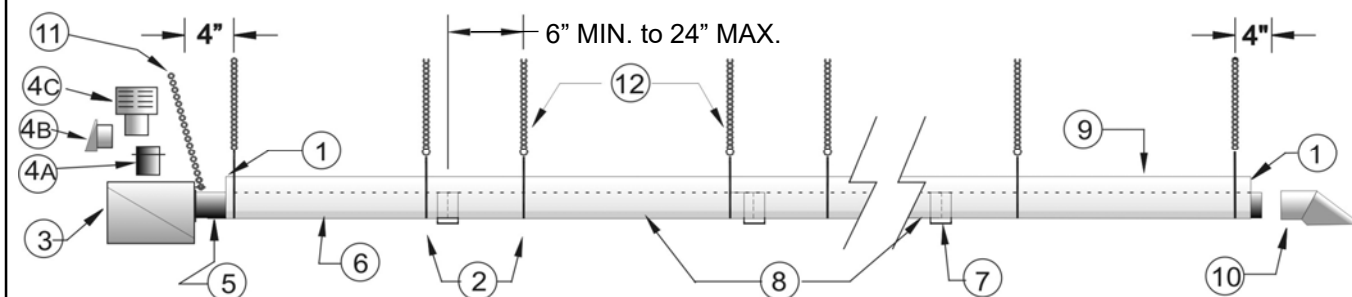
6) Slide the Torctite coupler into position across the center of the joint - SEE FIGURE 9

7) **IMPORTANT: TORQUE THE COUPLER BOLTS TO 40 ft-lbs**

8) Subsequent lengths of tube can then be installed, by joining them together swaged portion inside the next tube and locking the joints using the Torctite coupler. SEE FIGURE 9.

9) If there is a 90° elbow in the system refer to Section 7 and Figures 3 & 4

**FIGURE 7: STRAIGHT TUBE TYPICAL HANGER & SUPPORT SPACINGS**



SUSPEND ALL TUBES BY TWO (2) HANGERS PER 10' LENGTH, LOCATE HANGERS BETWEEN 6" to 24" FROM EACH TUBE CONNECTION.

1ST & 2ND TUBES FROM BURNER END: INSTALL WELDED SEAM FACING DOWNWARD.

- 1 - END CAP
- 2 - WIRE HANGER
- 3 - BURNER ASSEMBLY
- 4 - COMBUSTION AIR OPTIONS:
  - 4B - JS-0532-VC 4" WALL CAP
  - 4C - JA-0528-XX 4" ROOF CAP

- 5 - SIGHT GLASS
- 6 - ALUMINIZED TUBE WITH FLANGE
- 7 - TORCTITE TUBE COUPLER
- 8 - STEEL TUBE(S)

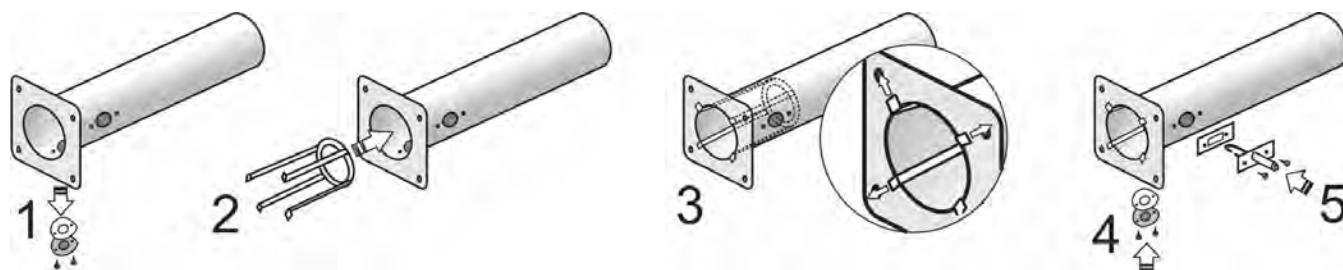
- 9 - REFLECTOR
- 10 - OPTIONAL FLUE VENT TERMINAL
- 11 - BURNER SUPPORT CHAIN
- 12 - HANGER SUPPORT CHAINS

### FIGURE 8A: INSTALL FLAME RECTIFIER IN TUBE , THEN INSTALL IGNITER

**All input rates: EXCEPT 80/60 does not require a flame rectifier.**

Flame Rectifier is shipped inside the Burner box.

Igniter is shipped taped inside the Burner box.



1 Remove & retain sight glass

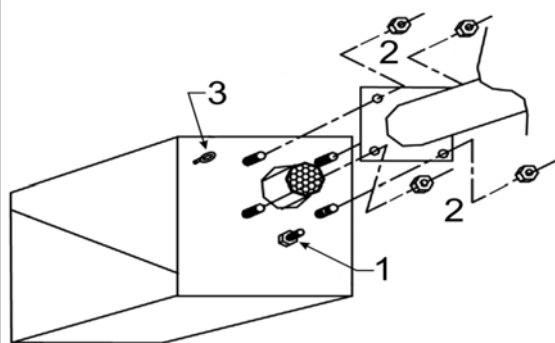
2 Insert Flame Rectifier into tube

3 Feet of the flame rectifier seat against the tube flange and point toward flange corners

4 Reinstall sight glass

5 Install igniter with gasket into tube port

### FIGURE 8B: BOLT BURNER TO TUBE FLANGE



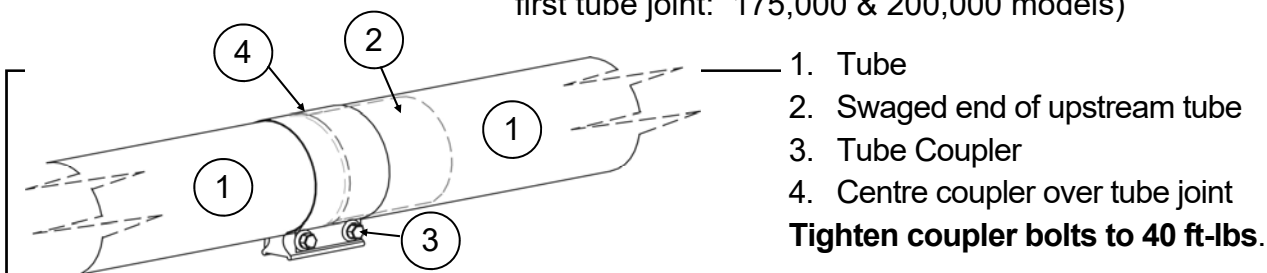
Note: Flange Gasket not required between burner and tube flange

1. Fifth Nut (Holds Inner Burner to Housing - Do Not Loosen or Remove)

2. Insert four burner bolts through the tube flange, secure tightly with lock nuts.

3. Secure suspension chain to eye bolt to stabilize burner

### FIGURE 9: COUPLER INSTALLATION (NOTE: See Section 9.3 for 'Special Couplers' at first tube joint: 175,000 & 200,000 models)



1. Tube

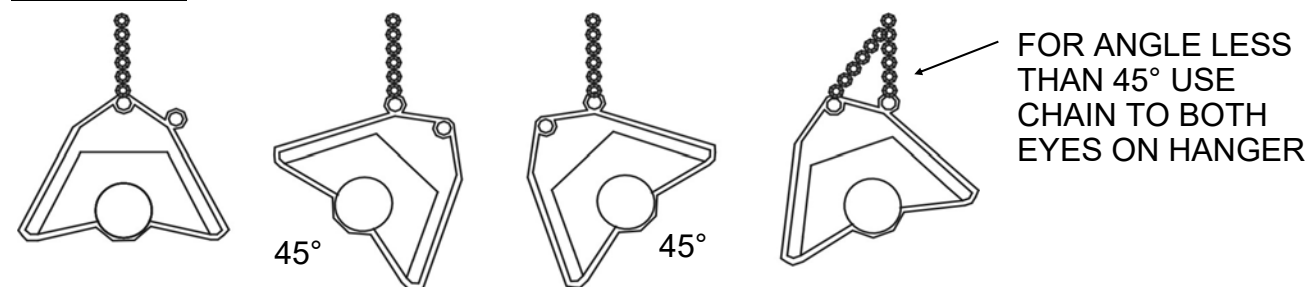
2. Swaged end of upstream tube

3. Tube Coupler

4. Centre coupler over tube joint

**Tighten coupler bolts to 40 ft-lbs.**

### FIGURE 10: HANGER / REFLECTOR ORIENTATION HORIZONTAL TO 45°





## 9.2 SETU / ITTU 'U'-TUBE SYSTEM ~ BURNER AND TUBE INSTALLATION

### TURBULATOR NOTES:

- Refer to Section 26, pages 45-46 for details on turbulator sizes and location in system

#### **Prior to Installation:**

- **200 / 140 x 30 ft-U** : Remove and discard 40" turbulator from the upstream end of last tube

1) Install Hangers using chain or other suitable suspension hardware at each side of the hanger: See Figure 11 next page

- Two hangers for first section (from burner), and one hanger for each additional section
- No closer than 12" (30 cm) and no further than 14" (35 cm) from the burner/tube flange
- No closer than 6" (15 cm) from a tube connection in the system
- No further than 18" (61 cm) from a tube connection in the system
- If angle mounting a 'U' Tube model, the vent side must be in the upper position

2) With all hangers in alignment and suspended at the same height (and angle), insert first aluminumized tube section on to the first two hangers: See Figure 12A next page

- Also lay the vent end tube on to the first two hangers - check tubes for turbulator label to ensure the correct tube is located at the vent end

NOTE: INSTALL THE FIRST AND SECOND TUBES (FROM BURNER) WITH THE WELDED SEAM ALONG THE TUBE LENGTH FACING DOWNWARD

3) Fasten flanged tube to hangers with 'U' bolts:

- All tubes on the burner-side of the heater are bolted to the hangers with 'U' bolts
- Tubes on vent-side simply rest in the hanger notch and do not fasten to the hanger.

4) Install Flame Rectifier (EXCEPT input 80/60); install igniter - See Figure 8A previous page.

5) Bolt burner to flange on first tube section - See Figure 8B previous page.

#### **IMPORTANT NOTE: Models with inputs 175,000 & 200,000 refer to section 9.3**

6) Slide a Torctite tube coupler over the swaged end of the first tube, then join the second tube over the swage in the first tube -

7) Slide the Torctite coupler into position across the center of the tube joint - SEE FIGURE 9

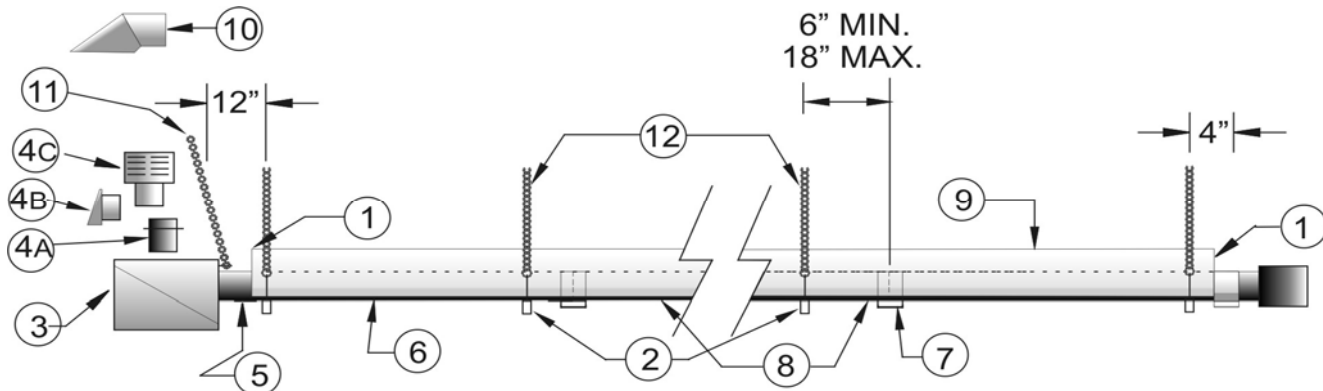
#### **IMPORTANT: TORQUE THE COUPLER BOLTS TO 40 ft-lbs**

8) Subsequent lengths of tube can then be installed on both sides of the hangers by joining them together swaged portion inside the next tube and locking the joints using the Torctite coupler. SEE FIGURE 9.

9) Install Turn Box: See Fig 12B

- The Turn Box has "long" and "short" tube legs
- The 'long' leg attaches to the burner-run tubes
- The 'short' leg attaches to the vent-run tube side - tubes end short of burner for connection of vent pipe

**FIGURE 11 'U'-TUBE TYPICAL HANGER & SUPPORT SPACING**

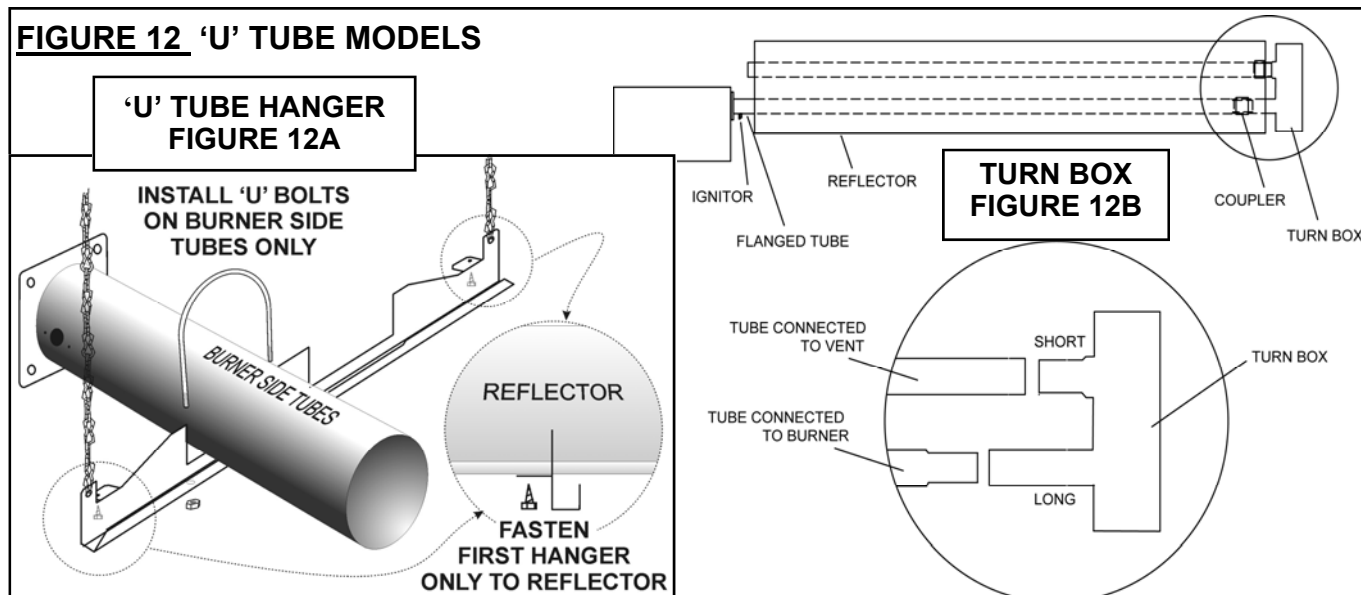


SUSPEND FIRST TUBES BY TWO (2) HANGERS, THEN SUBSEQUENT SECTIONS BY ONE HANGER  
LOCATE HANGERS BETWEEN 6" to 18" FROM EACH TUBE COUPLER.

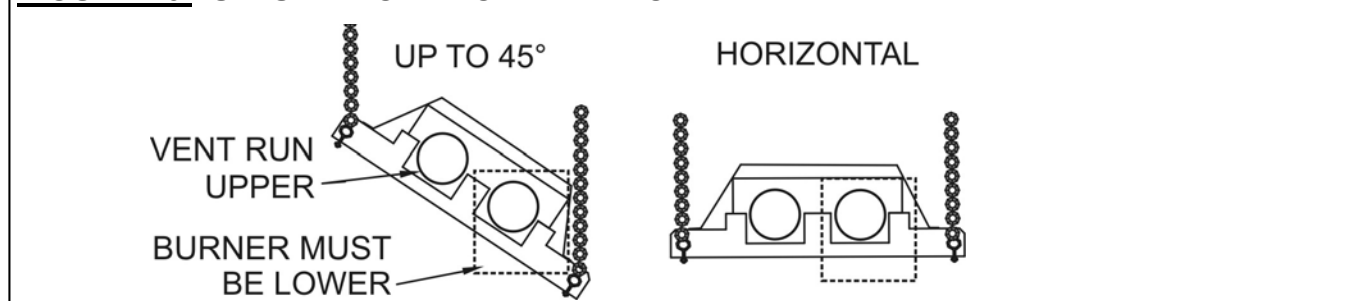
INSTALL FIRST AND SECOND TUBES (FROM BURNER END) WITH WELDED SEAM FACING DOWNWARD.

- |                             |                             |                           |
|-----------------------------|-----------------------------|---------------------------|
| 1 - END CAP                 | 4B - JS-0532-VC 4" WALL CAP | 8 - STEEL TUBE(S)         |
| 2 - WIRE HANGER             | 4C - JA-0528-XX 4" ROOF CAP | 9 - REFLECTOR             |
| 3 - BURNER ASSEMBLY         | 5 - SIGHT GLASS             | 10 - FLUE VENT TERMINAL   |
| 4 - COMBUSTION AIR OPTIONS: | 6 - ALUMINIZED TUBE WITH    | 11 - BURNER SUPPORT CHAIN |
| 4A - JS-0532-SE 4" INTAKE   | FLANGE                      | 12 - HANGER SUPPORT       |
| ADAPTER                     | 7 - TORCTITE TUBE COUPLER   | CHAINS                    |

**FIGURE 12 'U' TUBE MODELS**



**FIGURE 13 'U' TUBE MODEL ORIENTATION**





### 9.3 SPECIAL COUPLING: 175,000 & 200,000 Btuh

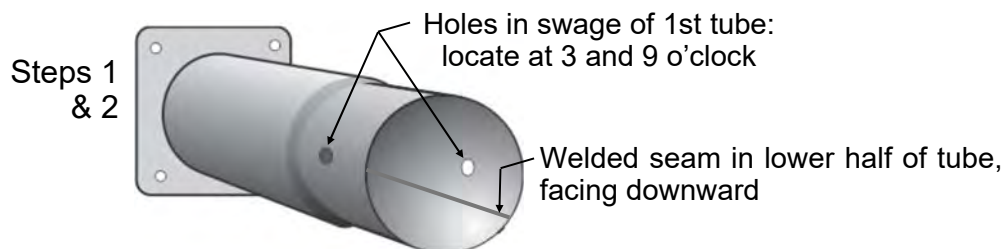
NOTE: The joint of 1ST & 2ND tubes of 175,000 & 200,000 heaters experience strong forces of expansion. Follow instructions below for special coupling of the tubes.

#### SPECIAL COUPLER INSTALLATION

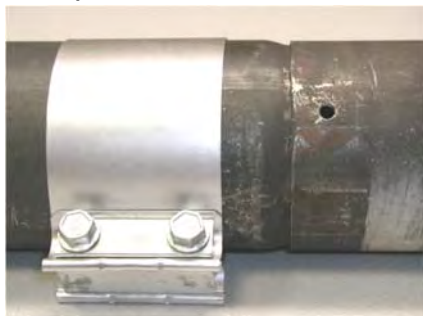
1. Note the 2 holes opposite each other at the swaged end of the first tube (flanged)
2. Install the **first tube** with 2 holes (swaged end) at the 3 and 9 o'clock position, with the **welded seam located in the lower half of tube, facing downward**
3. Slide the loosened tube coupler on to the first tube, past the swage
4. The second tube has a  $\frac{1}{4}$ " hole at the female end.
5. Slide second tube over swaged end of first tube to align the hole in the second tube with one of the holes in the first tube
6. Final alignment of the holes can be accomplished using a screw driver or other tool
7. **IMPORTANT:** Insert  $\frac{1}{4}$ " rivet into the hole to secure the tube connection
8. Slide coupler into position – half onto each tube – covering the rivet head
9. Tighten coupler bolts to 40 ft-lb
10. Install reflectors

#### FIGURE 16 SPECIAL COUPLING:

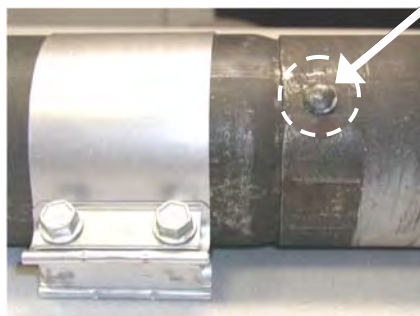
- 175,000 & 200,000 Btuh - Fasten Second Tube to First Tube -



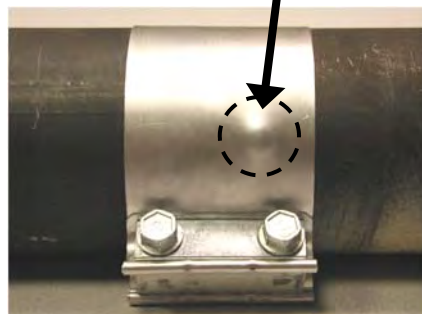
Steps 3 to 6



Step 7



Steps 8 & 9



## **10. REFLECTOR INSTALLATION**

**NOTE:** Ensure that you are installing a single reflector - reflectors can 'stick together' in packaging - take care to separate them.

**SET / ITT - STRAIGHT TUBE:** After burner and tubes have been installed, slide the reflectors one at a time into the wire hangers. As each successive reflector is installed on an in-line installation, the ends of the reflectors will overlap to provide continuous coverage over the entire tube system. The overlapping joints **MUST BE FASTENED TOGETHER** with a sheet metal screw.

Note that for either horizontal or angle mounting of the reflector, the tube must be level along its length. Improper mounting can result in overheating of controls and combustible materials.

Reflector extensions can be added to the heaters as an option. *See Figure 15 and instructions next page*

**SET-U / ITT-U - 'U'-TUBE:** After burner and tubes have been installed, slide the double-wide reflectors one at a time onto the hangers. Fasten the FIRST hanger nearest the burner to the reflector with a sheet metal screw up through the hole in the tab at each end of the hanger.

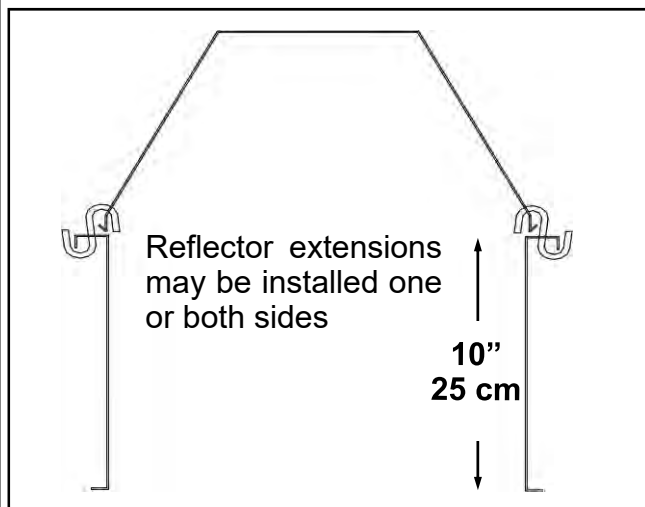
**Do not fasten any other hangers in the system to reflectors. SEE FIGURE 12A**

As each successive reflector is installed, the ends of the reflectors will overlap to provide continuous coverage over the entire tube system. The overlapping joints **MUST BE FASTENED TOGETHER** with sheet metal screws - Note that for both horizontal and angle mounting, the tube must be level along its length. Improper mounting can result in overheating of controls and combustible materials.

Reflector extensions can be added to the heaters as an option. *See Figure 15 and instructions next page*

**FIGURE 15 REFLECTOR EXTENSIONS**

**(OPTIONAL - IF REQUIRED )**

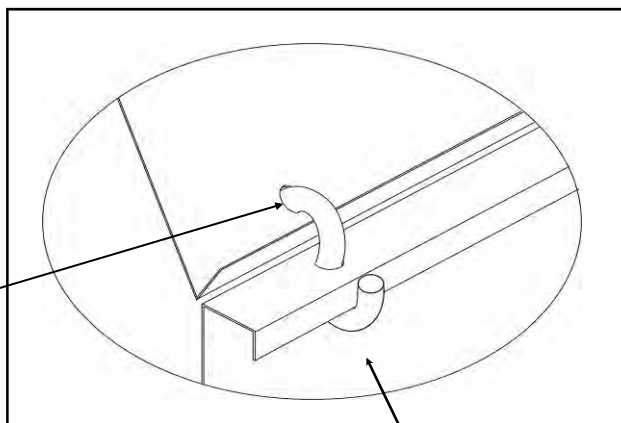


**Reflector Extension Kit JS-0509-KT**

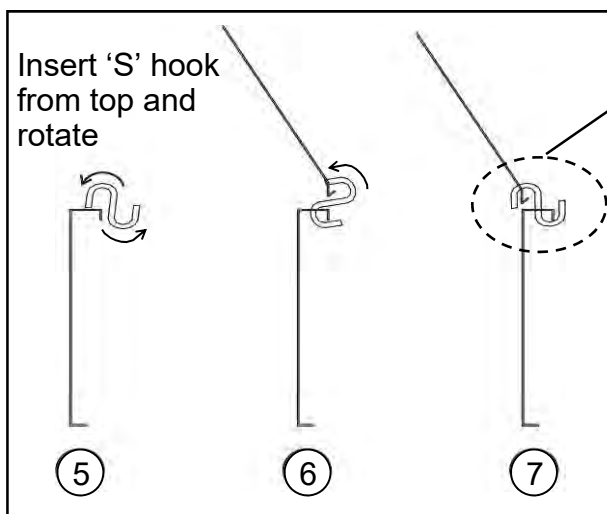
Includes:

- Qty 1 x 10 ft long x 10 inch deep reflector extension
- Qty 3 x "S" Hooks

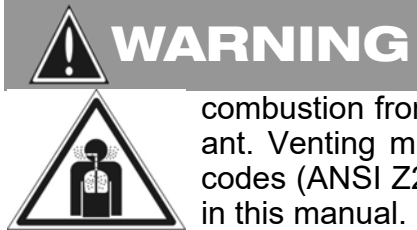
1. Reflector extensions may be installed on one side or both sides of the reflector
2. Reflector extensions are 116" (295 cm) long
3. Holes (3) in the reflector extension for "S" hooks are located 2.25" (5.7 cm) from each end and one at the center
4. Drill 1/4" (7 mm) holes in the reflector 3/4" (2 cm) up from the bottom edge of the reflector to align with the 3 holes in the top of the reflector extension



5. Insert "S" hook down through hole in the top of the reflector extension
6. Rotate "S" hook approx. 90°, and insert into hole drilled in reflector
7. Settle reflector extension into place



## 11. FLUE VENTING



Inadequate venting of a heater may result in asphyxiation, carbon monoxide poisoning, injury or death. This heater may use a vent connection or indirect venting system to remove products of combustion from the space. Seal all vent connections with high temperature sealant. Venting must be in accordance with all local, state, provincial, and national codes (ANSI Z223.1/NFPA 54 in USA; B149.1 in Canada) and as indicated below in this manual.

**THIS TUBE HEATER IS APPROVED FOR VENTING DIRECTLY TO THE OUTSIDE AND UNVENTED (INDIRECT VENTING) APPLICATIONS. THE SYSTEM MUST NOT BE OPERATED WITHIN A NEGATIVE AIR CONDITION UNLESS COMBUSTION AIR IS DUCTED FROM OUTSIDE DIRECTLY TO THE BURNER.**

**IF NEGATIVE PRESSURE IS EXPERIENCED OR ANTICIPATED, THE SECOND PORT (BARB) ON THE BLOCKED FLUE SWITCH MUST BE CONNECTED DIRECTLY TO OUTSIDE AIR USING 1/4" PLASTIC HOSE FROM BLOCKED FLUE SWITCH TO OUTSIDE OF BUILDING (FIELD SUPPLIED).**

### UNVENTED (INDIRECT MECHANICAL VENTING SYSTEM)

Indirect venting must not be used if the building experiences a negative air condition. A minimum 3 ft (91 cm) length of single walled vent pipe is to be installed on the swaged end of the last tube.

**USA:** Natural or mechanical means shall be provided to supply and exhaust at least 4ft<sup>3</sup>/min/1000Btuh (0.38m<sup>3</sup>/min/kW) input of installed heaters. Some local codes may require an electrical interlock to a dedicated exhaust fan. Exhaust must be located as high as practicable in the structure above the level of the heater(s). Consult your local code and ANSI Z223.1 latest edition for all venting requirements and practices.

**Canada:** It is required that the heater(s) be electrically interlocked to dedicated exhaust fan(s) by means of an Air Proving Switch. Exhaust fan(s) must be sized to create 300 cfm (8.5 cu m/min) exhaust for every 100,000 Btuh (30 kW) or any fraction thereof of total input of installed equipment. Exhaust must be located as high as practicable in the structure above the level of the heater(s). Sufficient supply air must be provided. Consult the latest edition of CSA.B149.1 Section 8 for venting system and air supply requirements.

### VENTED DIRECTLY TO THE OUTSIDE - GENERAL

**It is the sole responsibility of the installer to adhere to all current local codes and/or ANSI Z223.1 / CSA.B149.1 latest editions for all venting requirements, and practices.**

It is a normal condition that during heat-up and cool-down a tube heater will expand and contract. **Allowance for heater expansion must be made in the vent and combustion air duct.** Improper installation can result in property damage, injury or death.

- All approved vent pipe, adapters, and thimbles are supplied locally by others.
- **Special Venting System** requirements: Vent pipe must be minimum 26 gauge single-wall vent pipe of 4" (10 cm) diameter, except that portion of vent passing through a wall or roof can be 4" double-wall vent with stainless steel inner liner. Refer to Section 11A for vent length requirements.
- **Multiple Heaters:** Optionally, two heaters may be vented through an approved common 4" x 4" x 6" Vent Tee (10 x 10 x 15 cm), supplied by the manufacturer. Vent pipe from each heater does not need to be equidistant to the vent Tee, but must comply to total length requirements (Section 9A below). When T-vented, both heaters must be controlled by a single common thermostat or "ON/OFF" switch.

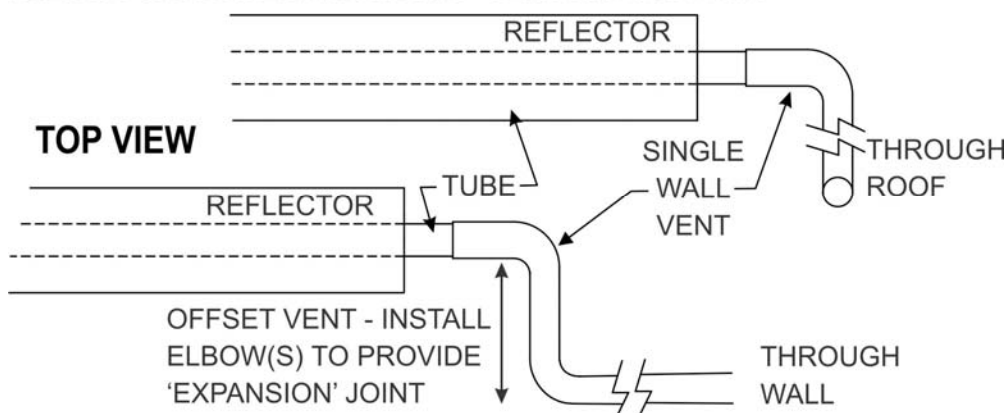
heaters must be controlled by a single common thermostat or “ON/OFF” switch.

- Install a minimum 36 inch (91 cm) length of 4” (10 cm) diameter vent pipe on the system, and a minimum 12 inch (30 cm) before any Tee or Elbow.
- Seal all vent connections with high temperature sealant. Vent connections must be secured with three (3) #8 sheet metal screws uniformly spaced around the circumference of the pipe.
- Any horizontal vent pipe must slope approx. 1/4” per foot away from the heater
- When the vent pipe passes through a cold or unheated area where the ambient temperature is likely to produce condensation of the flue gases, the vent pipe shall be insulated with a suitable material as approved and specified by the insulation manufacturer to withstand temperature up to 460°F (238°C).
- The vent system must **always** be adequately supported to prevent sagging.

**FIGURE 17 - Heater Expansion - Suggested Vent Configuration\***

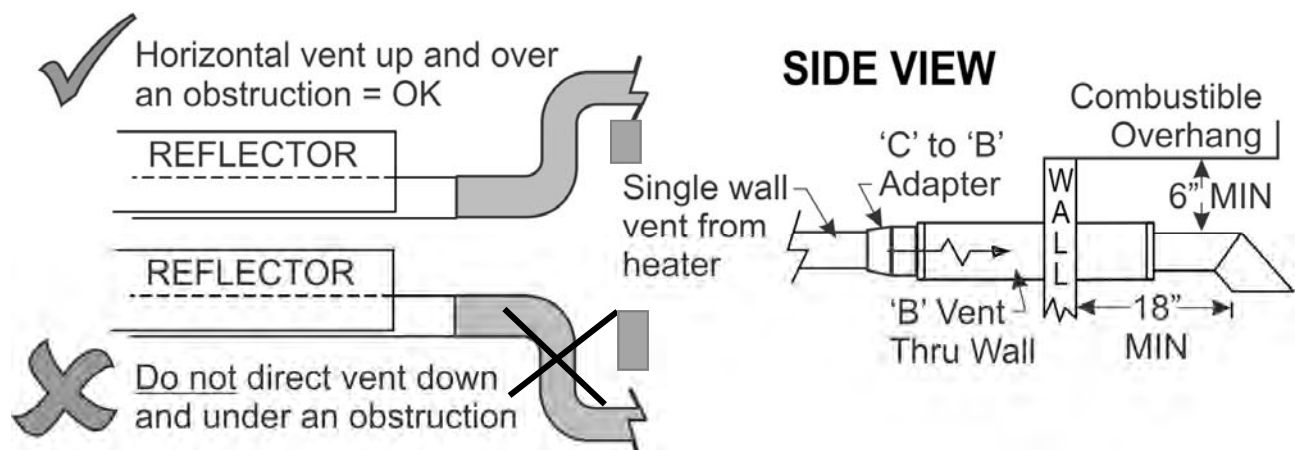
All Vent Pipe & Adapters By Others

ALLOW FOR HEATER EXPANSION - VENT AND AIR DUCT



\* Other means of slip fit installation of the vent and duct are acceptable providing there is adequate allowance for free expansion and contraction of the system, and free flow of vent gases and combustion air.

**FIGURE 18- Horizontal Vent - ALL vent pipe and adapters by others**



Clearances apply to Vent Terminal: 4” (10 cm) - JA-0528-XX Or 6” (15 cm) - JA-0529-XX

See notes below for use of other approved vent terminations

### **HORIZONTAL VENT THROUGH THE SIDEWALL:**

- Any horizontal portion of the flue vent system must slope downwards approximately 1/4” per foot (63 mm/ 300 mm) toward the vent terminal - radiant tube must be level.

- Install a minimum 36 inch (91 cm) length of minimum 26 gauge single walled 4" (10 cm) diameter vent pipe on the system, and a minimum 12 inch (30 cm) before any Elbow or Tee.
- Seal all vent connections with high temperature sealant. Vent connections must be secured with three (3) #8 sheet metal screws uniformly spaced around the circumference of the pipe.
- Any horizontal vent pipe must slope approx. 1/4" per foot away from heater. **DO NOT DROP THE LEVEL OF THE VENT BELOW THE HEATER MORE THAN 1/4" PER FOOT**
- When the vent pipe passes through a cold or unheated area where the ambient temperature is likely to produce condensation of the flue gases, the vent pipe will be insulated with a suitable material as approved and specified by the insulation manufacturer to withstand temperature up to 460°F (238°C).
- The vent system must **always** be adequately supported to prevent sagging.

### **HORIZONTAL VENT THROUGH SIDEWALL:**

- Any horizontal portion of the flue vent system must slope downwards approximately 1/4" per foot (63 mm/ 300 mm) toward the vent terminal - radiant tube must be level. **DO NOT DROP THE LEVEL OF THE VENT BELOW THE HEATER MORE THAN 1/4" PER FOOT**

#### **Clearances for horizontal flue vent :**

- Will not terminate less than 1 ft (30 cm) above grade level, unless its location is adjacent to public walkways, then it must not terminate less than 7 ft (2.1m) above the walkway.
- Below a combustible overhang or soffit:
  - As indicated in FIGURE 5 for approved terminations: 4" (10 cm) JA-0528-XX or 6" (15 cm) JA-0529-XX
  - For other approved terminations: Will terminate 3 ft (90 cm) or more below a combustible soffit or overhang.

#### **USA specific horizontal vent requirements:**

- The bottom of the vent terminal and the air intake shall be located at least 12 inches (300mm) above grade.
- A horizontal vent will not terminate:
  - Less than 3 ft (90 cm) above a mechanical air inlet located within 10 ft (3.1 m)
  - Less than 4 ft (1.2 m) below, 4 ft (1.2 m) horizontally from, and 1 ft (0.3 m) above any window or door that opens, or gravity air inlet to a building
  - Less than 4 ft (1.2 m) horizontal clearance from gas and electric meters, regulators and relief equipment

#### **CANADA specific horizontal vent requirements:**

- A horizontal vent will not terminate:
  - Within 6 ft (1.8 m) of a mechanical air supply inlet to any building.
  - Above a gas utility meter and regulator assembly within 3 ft (0.9 m) horizontally of the vertical centerline of the regulator vent outlet to a maximum vertical distance of 15 ft (4.5 m).
  - Within 3 ft (90 cm) of any gas pressure regulator vent outlet
  - Within the following distances of a window or door that can be opened in any building, of any non-mechanical air-supply inlet to any building, or of the combustion air inlet of any other appliance:
    - 12 inches (30 cm) for inputs up to and including 100,000 Btuh (30 kW)

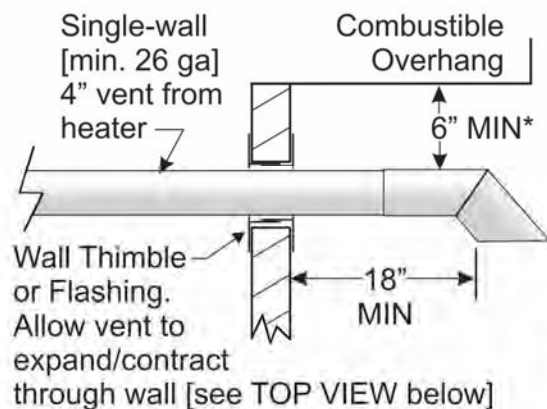


- Use approved 4" (10 cm) (JA-0528-XX) or 6" (15 cm) (JA-0529-XX) horizontal wall vent terminal OR a High-Wind type termination cap approved by a recognized certification agency
- Install any termination cap a minimum of 18 inches (45 cm) from the outside wall to the inside edge of terminal opening to alleviate back pressure caused by turbulent wind conditions (See Fig. 20). Ensure flue gases are directed away from the structure to protect building materials from degradation by the exhausted flue gases.
- At most two 90° elbows can be installed in a horizontal vent
- Installation of the vent must prevent blockage by snow and protect building materials from degradation by flue gases.

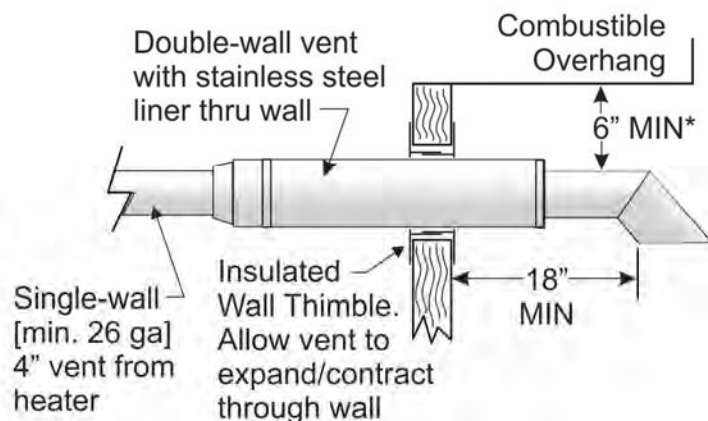
**FIGURE 20 - Heater Venting Horizontally Through Sidewall**

All Vent Pipe, Adapters, Thimbles by others

### NON-COMBUSTIBLE WALL

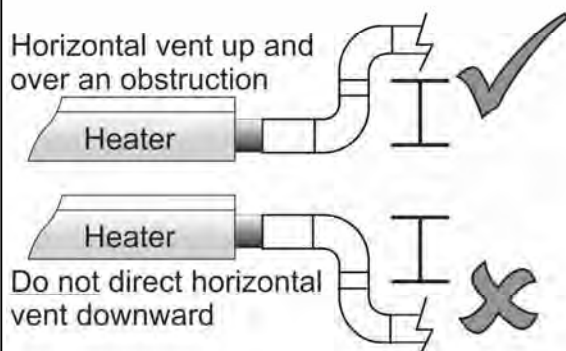


### COMBUSTIBLE OR NON-COMBUSTIBLE WALL

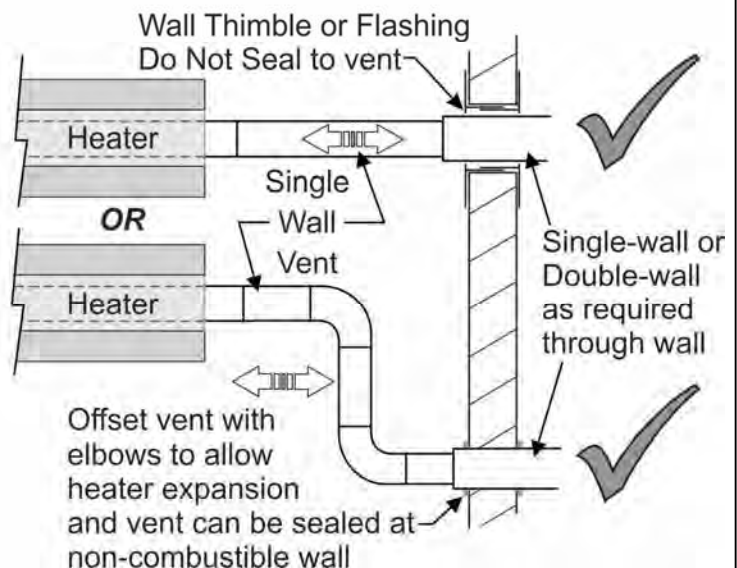


\*6" Clearance Above applies to optional Vent Terminal:  
JA-0528-XX - 4" (10 cm); or JA-0529-XX - 6" (15 cm)  
Other high-wind terminals may require higher clearance

### SIDE VIEW



### TOP VIEW - ALLOW HEATER EXPANSION

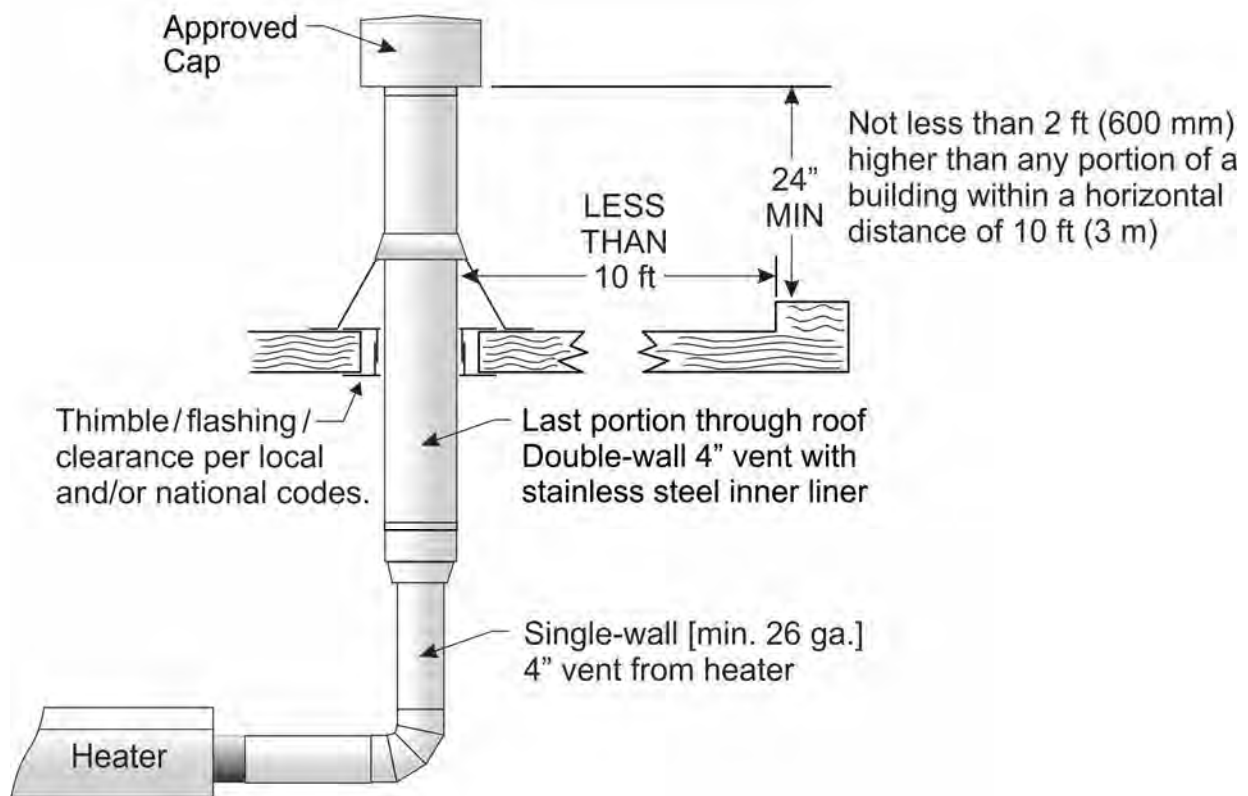


## **VERTICAL VENT THROUGH THE ROOF:**

It is the sole responsibility of the installer to adhere to all current local codes and/or ANSI Z223.1 / CSA.B149.1 latest editions for all venting requirements, and practices.

- Use an approved termination cap as supplied by the manufacturer of the vent
- When vent and combustion air are taken through the roof, the exhaust vent should always terminate higher than the combustion air intake, to prevent recycling the products of combustion back into the heater
- At most a quantity of three 90° elbows can be installed in a vertical vent

**FIGURE 21 - Heater Venting Vertically Through Roof**



Optionally, two heaters may be vented through an approved common 4" x 4" x 6" Vent Tee (10 x 10 x 15 cm), supplied by the manufacturer. Vent pipe from each heater does not need to be equidistant to the vent Tee, but must comply to total length requirements (Section 11A below). When T-vented, both heaters must be controlled by a single common thermostat or "ON/OFF" switch.

## 11A. Combined System Length: Tube Heater + Vent + Combustion Air Duct:

**MINIMUM VENT LENGTH:** (Vented or Unvented [indirect mechanical ventilation])

- Minimum vent length of 3 ft (91 cm) is required (NOTE: 200,000 LP: Minimum 8 ft (244 cm))

**MAXIMUM SYSTEM LENGTH (includes: Tube Heater length + combustion air duct + vent):**

- Each 90° elbow in the system has an equivalent length of 5 ft.
- A maximum of 2 elbows are allowed in any portion (duct, tube heater, vent) with the exception of up to three 90° elbows in a vertical vent run through the roof
- Combustion air duct may be 4" or greater diameter and is not to exceed lengths in Table 4

***Exception: 200,000 Btuh requires minimum 5"Ø duct for outside combustion air***

- Exceeding the allowable lengths in the table below can create combustion and/or condensation problems and will void CSA Certification and the heater warranty.
- Do not exceed the **Maximum Combined System Length** regardless of the allowed maximum length of individual vent or combustion air duct

**TABLE 4: COMBINED SYSTEM LENGTH**

***Installations up to 4500 ft - Higher altitudes refer to Section 27***

| SET / ITT Model | Do Not Exceed Max. Combined System Length* |                    | Max. Vent Length*<br>Individual: 4" Ø<br>Combined: 6" Ø | Max. Air Duct Length*<br>(by Duct Diameter) |       | Example  |
|-----------------|--|--------------------|---|---|-------|--|
|                 | With 4" Ø Air Duct                         | With 5" Ø Air Duct |   | 4" Ø  | 5" Ø  |  |
| 80 / 60         | 80 ft                                      | 100 ft             | Up to 20 ft   | 20 ft                                       | 40 ft | <b>155/110 Model:</b><br><br>Tube Heater Length    50 ft<br>1 x 90° elbow (vent)    5 ft<br>Straight vent            20 ft<br>1 x 90° elbow (duct)    5 ft<br>Air Duct: 4" Ø <u>17 ft</u><br>Combined Length       97 ft<br>Max. Allowed            100 ft |
| 110 / 75        | 100 ft                                     | 120 ft             | Up to 30 ft   | 20 ft                                       | 40 ft |  |
| 130 / 90        | 100 ft                                     | 120 ft             | Up to 30 ft   | 20 ft                                       | 40 ft |  |
| 155 / 110       | 100 ft                                     | 120 ft             | Up to 30 ft   | 30 ft                                       | 50 ft |  |
| 175 / 125       | 120 ft                                     | 140 ft             | Up to 40 ft   | 30 ft                                       | 50 ft |  |
| 200 / 140       | 120 ft                                     | 140 ft             | Up to 40 ft   | 30 ft                                       | 50 ft |  |
|                 |  |                    |   |   |       |  |

\* Regardless of the allowed maximum length of the individual vent or combustion air duct, **do not exceed the Maximum Combined System Length** which includes the length of the tube heater PLUS the air duct PLUS the vent.

## 12. COMBUSTION AIR DUCTING

**Do not install filters on the combustion air intake. Ensure adequate clearance around the air intake to allow sufficient combustion air supply to the heater.**

An opening is located on the top surface of the burner housing for combustion air. Ensure adequate clearance around this opening to allow sufficient combustion air supply to the heater. Combustion air duct must be constructed of noncombustible material.

When a tube heater is operated in a negative air condition or air-born dust or contaminants are present as in woodworking and welding shops, air for combustion must be ducted from outside the negative or contaminated area to the 4 inch (10 cm) diameter intake flange supplied on the blower. Maximum system, vent and duct length is listed above.

- The total system length and individual flue vent or the combustion air duct is not to exceed the lengths listed above
- Total combined system length is reduced by five feet for every 90° elbow installed in the vent or duct *and* in the tube system (see above for allowable total lengths)
- Exceeding the allowable lengths may create condensation or soot conditions and will void CSA Design Certification and product warranty

The air intake will not be located less than:

- Three feet above grade
- Twelve inches from flue vent terminal of any heater with input up to 100,000 Btu/hr
- Three feet from flue vent terminal of any heater over 100,000 Btu/hr

This heater has an optional fresh air intake duct hood for wall (JS-0532-VC) or roof cap (JS-0530-XX) to bring combustion air to the heater from outside. Ensure adequate clearance around the air intake to allow sufficient combustion air supply to the heater. If drawing fresh air from outside, it is recommended that any single wall pipe containing cold air be insulated to prevent or reduce condensation on the pipe.

**Do not use flexible dryer hose** or any 'soft wall' tubing for air inlet duct, the corrugated sides of this tubing restrict air flow. A good quality industry approved insulated flex is allowed.

### **CAUTION:**



In locations where chlorinated Hydrocarbons are in use, such as Trichloroethylene or Chloroethylene Nu it is essential that combustion air be brought in from a non-contaminated area. Burning the fumes from these gases will create Hydrochloric acid fumes, which are detrimental to humans, equipment and buildings. Typical sources of other contaminants are paint removers, paints, refrigerants, solvents, adhesives, degreasers, lubricants, pesticides, etc.



The heater manufacturer cannot anticipate all types and chemical composition of possible contaminants at project sites. Confer with project site safety, health and engineering staff and/or local authorities having jurisdiction such as the Fire Marshall and Department of Labor for possible contaminants and any conflict with the installation of hot surface heating equipment.

### 13. GAS SUPPLY - HEATER EXPANSION - FLEXIBLE GAS CONNECTION

The gas supply must be installed to the heater using:

- **USA:** an approved Stainless Steel Flexible Gas Connector certified for use on an infrared radiant tube heater (ANSI Z21.24 CSA 6.10);
- **CANADA:** an approved Type 1 Hose Gas Connector (CAN/CGA 8.1).
- The heater must be isolated from the gas supply piping system by closing its individual manual shut off valve (field supplied) during any pressure testing of the gas supply piping system.

**CAUTION:** Compensation for normal gas supply pipe expansion, and radiant tube heater expansion must be provided. All piping must conform to local codes— Refer to Heater Expansion & Flexible Gas Connection—Sections 14 next two pages



Provide a 1/8 in (3.2 mm) NPT plugged tapping, accessible for test gauge connection, immediately upstream of the gas supply connection to the heater.

**DO NOT** use pressure greater than 1/2 psig to pressure check the heater.



**TEST FOR LEAKS:** All gas piping and connections must be tested for leaks after the installation is completed.

**DO NOT USE A MATCH OR OPEN FLAME OF ANY KIND TO TEST FOR LEAKS.** Apply soap suds solution to all connections and joints and if bubbles appear, leaks have been detected and must be corrected. **NEVER OPERATE THE HEATER WITH LEAKING CONNECTIONS.**



The supply system should be checked first with heater turned “OFF” followed by another check with heater turned “ON”.

**IMPORTANT:** Minimum supply line pressure at the inlet to the heater regulator must not be lower than 5.0 inches of water column pressure for natural gas. The supply gas pressure must be checked with all heaters in operation.



Installation of a gas line (trap) “drip leg” is required at the inlet connection tee following the pipe drop to the heater. Failure to provide a “drip leg” could result in condensation and foreign matter passing into the gas valve. Failure to install a “drip leg” in the gas line can cause property damage, injury or death and will void the heater warranty.



**TABLE 4**

| GAS TYPE    | <u>INLET SUPPLY PRESSURE</u><br>INCHES WATER COLUMN |         | <u>MANIFOLD PRESSURE</u><br>(tap at gas valve outlet)<br>INCHES WATER COLUMN |
|-------------|---|---------|--|
|             | MINIMUM   | MAXIMUM |  |
| Natural Gas | 5.0   | 14.0    | HI: 3.5  |
|             |   |         | LO: 2.2  |
| LPG         | 11.0  | 14.0    | HI: 10.0   |
|             |   |         | LO: 5.0  |

**NOTE:** Access to the manifold pressure test port is on the top of the valve. A 3/16" Allen Wrench is necessary to check this. When checking or setting the manifold pressure, a **water manometer** should be used. Gauges which measure in ounces per square inch or pounds per square inch are not accurate enough to properly measure or set the pressure.

## **WARNING**



**THIS HEATER WILL EXPAND IN LENGTH AS IT HEATS UP.** It is a normal condition that during heat-up and cool-down a tube heater will expand and contract. Allowances for heater expansion must be made in the gas connection, venting and combustion air ducting. Improper installation, alteration, or adjustment can result in property damage, injury or death. **See also Section 13**




The Btuh input and the tube length determine the overall expansion that occurs. A typical infrared tube installation will expand toward both the Burner and the vent end.



To allow heater expansion the gas supply must be installed using the flexible gas connector supplied in the burner kit:

**In the USA:** a stainless steel Flexible Gas Connector certified for use on an infrared radiant tube heater (ANSI Z21.24 CSA 6.10);

**in CANADA:** a Type 1 Hose Connector (CAN/CGA 8.1). Also the flue vent, and combustion air intake (if used) must be installed in such a manner that the normal expansion of the heater will be accommodated.

 **IMPORTANT:** See next page: orientation of flexible gas connector between heater and gas supply.

**TABLE 5**

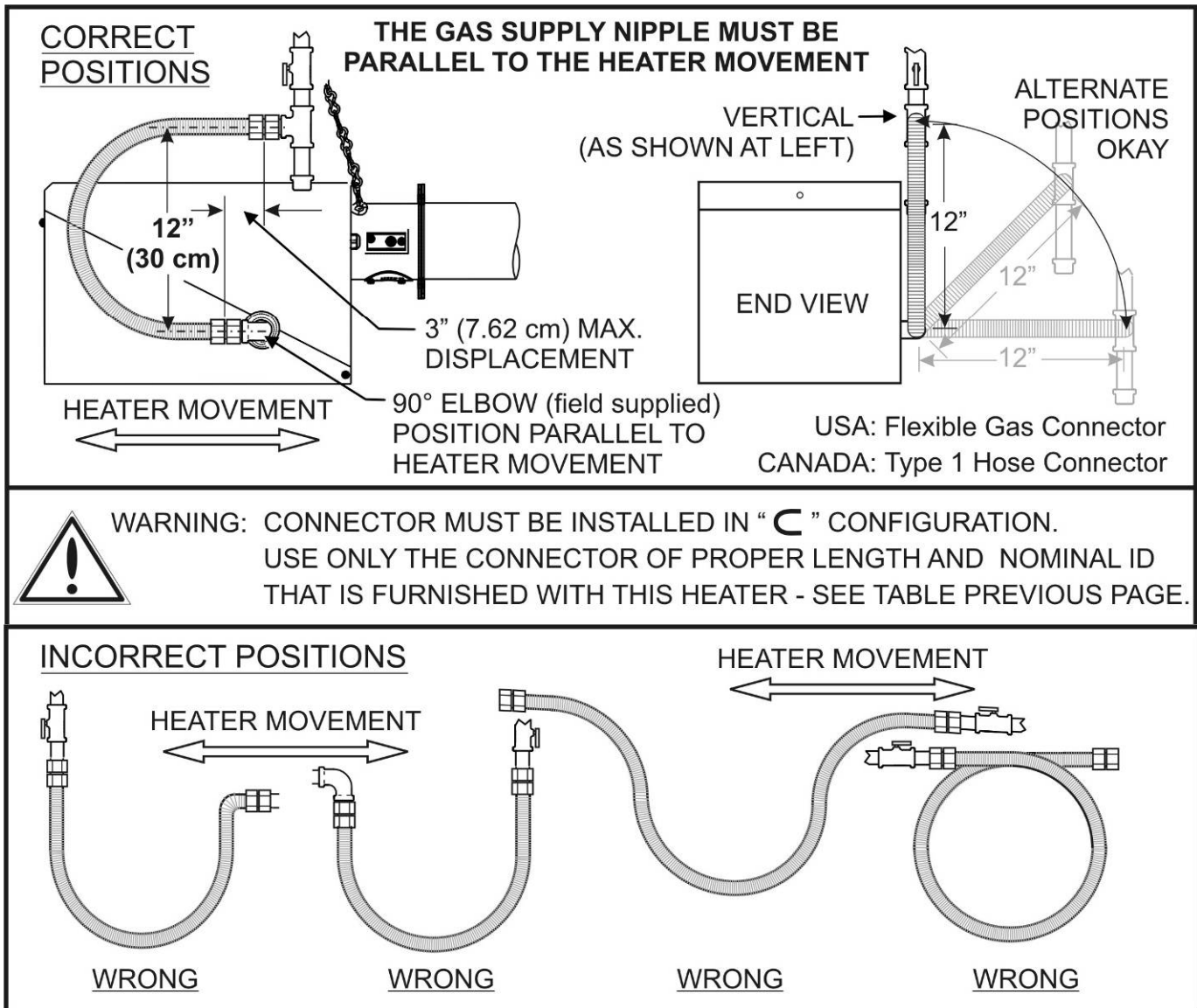
| SET / ITT Model | Tube Length Feet | Approx. Expansion in Length | USA: Mandatory Flexible Gas Connector ID x Length - Part # | CANADA: Mandatory Type '1' Gas Hose Size - Part # |
|-----------------|------------------|-----------------------------|--|---|
| 80 / 60,000     | 20 / 30          | 1 3/4"                      | 1/2" x 24" - JL-0771-XX                                    | 1/2" x 36" - JL-0771-RC                           |
| 110 / 75,000    | 30 / 40          | 2"                          | 1/2" x 24" - JL-0771-XX                                    | 1/2" x 36" - JL-0771-RC                           |
| 130 / 90,000 NG | 30 / 40          | 2"                          | 1/2" x 24" - JL-0771-XX                                    | 1/2" x 36" - JL-0771-RC                           |
| 130 / 90,000 LP | 40 ONLY          | 2"                          | 1/2" x 24" - JL-0771-XX                                    | 1/2" x 36" - JL-0771-RC                           |
| 155 / 110,000   | 40 / 50          | 2 1/2"                      | 3/4" x 36" - JL-0771-YY                                    | 3/4" x 36" - JL-0771-RB                           |
| 175 / 125,000   | 50 / 60          | 2 3/4"                      | 3/4" x 36" - JL-0771-YY                                    | 3/4" x 36" - JL-0771-RB                           |
| 200 / 140,000   | 50               | 2 3/4"                      | 3/4" x 36" - JL-0771-YY                                    | 3/4" x 36" - JL-0771-RB                           |
| 200 / 140,000   | 60               | 3 1/4"                      | 3/4" x 36" - JL-0771-YY                                    | 3/4" x 36" - JL-0771-RB                           |

## FIGURE 20 ORIENTATION OF FLEXIBLE GAS CONNECTOR



The flexible gas connector **MUST** be installed in the orientation shown below as required by national installation codes and by the certification standard of this heater. This orientation protects the flexible gas connector from damage due to movement during heater expansion.

It is the responsibility of the installer to ensure correct installation of the flexible gas supply.



The flue vent, and combustion air duct (if installed) must also be configured in such a manner that the normal expansion of the heater will be accommodated. **See Section 11.**

## 14. ELECTRICAL AND THERMOSTAT WIRING (WIRING DIAGRAMS PAGE 31 & 32)



### NOTICE

The heater must be electrically grounded in accordance with the National Electrical Code. ANSI / NFPA 70 or current Canadian Electrical code CSA C22.1.

Appliance and control wiring must be in accordance with all applicable local codes. The total load of all heaters must be considered in determining the required contact rating of the controlling thermostat or switch. Each tube heater requires 120V, 60 HZ electrical power sized for 145VA. The heater includes a 24V/120V relay switch and is to be controlled by a Honeywell FocusPRO 5000 Series TH5220D1037 (or equivalent) 24V Digital Thermostat - Schwank/InfraSave P/N JS-0569-DT. Maximum power flow for internal 24V burner components is 21VA.

A maximum night set-back of 9°F (5°C) is recommended for optimum economy and comfort. To maintain satisfactory comfort levels do not turn off the heating system over night/weekends.

## 15. HIGH ALTITUDE INSTALLATIONS - *also refer to chart in Section 27*

When this appliance is installed above the altitude stipulated below for the USA or Canada, the input must be de-rated by 4% for each 1000 ft above the altitude listed. **If your local utility supplies gas with a de-rated heat content, no orifice change is required in the heater.** If the gas supply is not de-rated, the orifice must be changed according to the chart in Section 28. Check with your local utility regarding the gas supply and the de-rating of this appliance.

**USA:** The factory installed orifice for this appliance is approved for altitudes zero to 2000 feet above sea level. When installed above 2000 feet, **refer to Section 28.**

**Canada:** The factory installed orifice for this appliance is approved for altitudes zero to 4500 feet above sea level. When installed above 4500 feet, **refer to Section 28.**

## 16. LIGHTING INSTRUCTIONS

Refer to the lighting instructions label on the outside of the burner housing. If the unit locks out on safety, main power to the unit must be manually interrupted for a 30 second reset period before the heater can be restarted.

**NOTE:** *On initial installation, the unit may lock out on safety owing to the length of time required to bleed air from the gas piping system.*

## 17. RECOMMENDED MAINTENANCE



Improper adjustment, alteration, service or maintenance can cause property damage, injury or death. This heater must be installed and serviced only by a trained gas service technician.

1. Inspect the entire heater system, venting, and gas supply connections at least annually prior to the heating season. Replace worn parts and repair deficiencies.
2. Check the inlet air opening and the blower periodically, cleaning off any lint or foreign matter. It is important that the flow of combustion and ventilation air must not be obstructed.
3. Lubricate Blower motor, by adding several drops of oil to oil ports located on the left hand side of the motor.

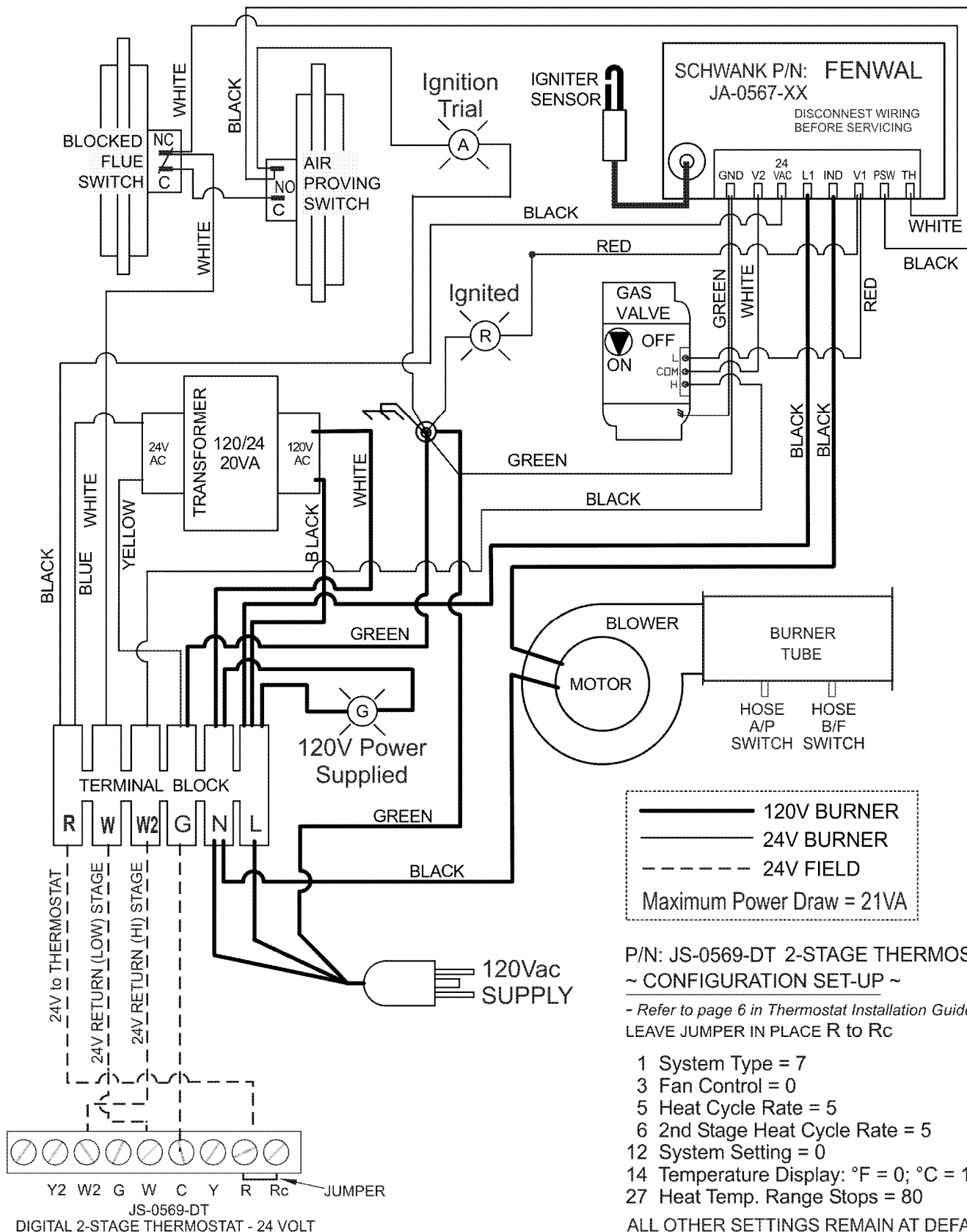
THE TUBE HEATER BURNER IS COMPLETELY FACTORY ASSEMBLED AND TESTED. ANY ALTERATION VOIDS THE CSA CERTIFICATION AND MANUFACTURER'S WARRANTY. FOR ADDITIONAL INFORMATION, CONTACT YOUR LOCAL DISTRIBUTOR OR MANUFACTURER.



## 18. WIRING DIAGRAM FENWAL DSI

### 24 VOLT TWO STAGE GAS VALVE – USING 24V TWO STAGE THERMOSTAT

(FOR MULTIPLE HEATERS PER THERMOSTAT SEE NEXT PAGE)



P/N: JS-0569-DT 2-STAGE THERMOSTAT  
~ CONFIGURATION SET-UP ~

- Refer to page 6 in Thermostat Installation Guide  
LEAVE JUMPER IN PLACE R to Rc

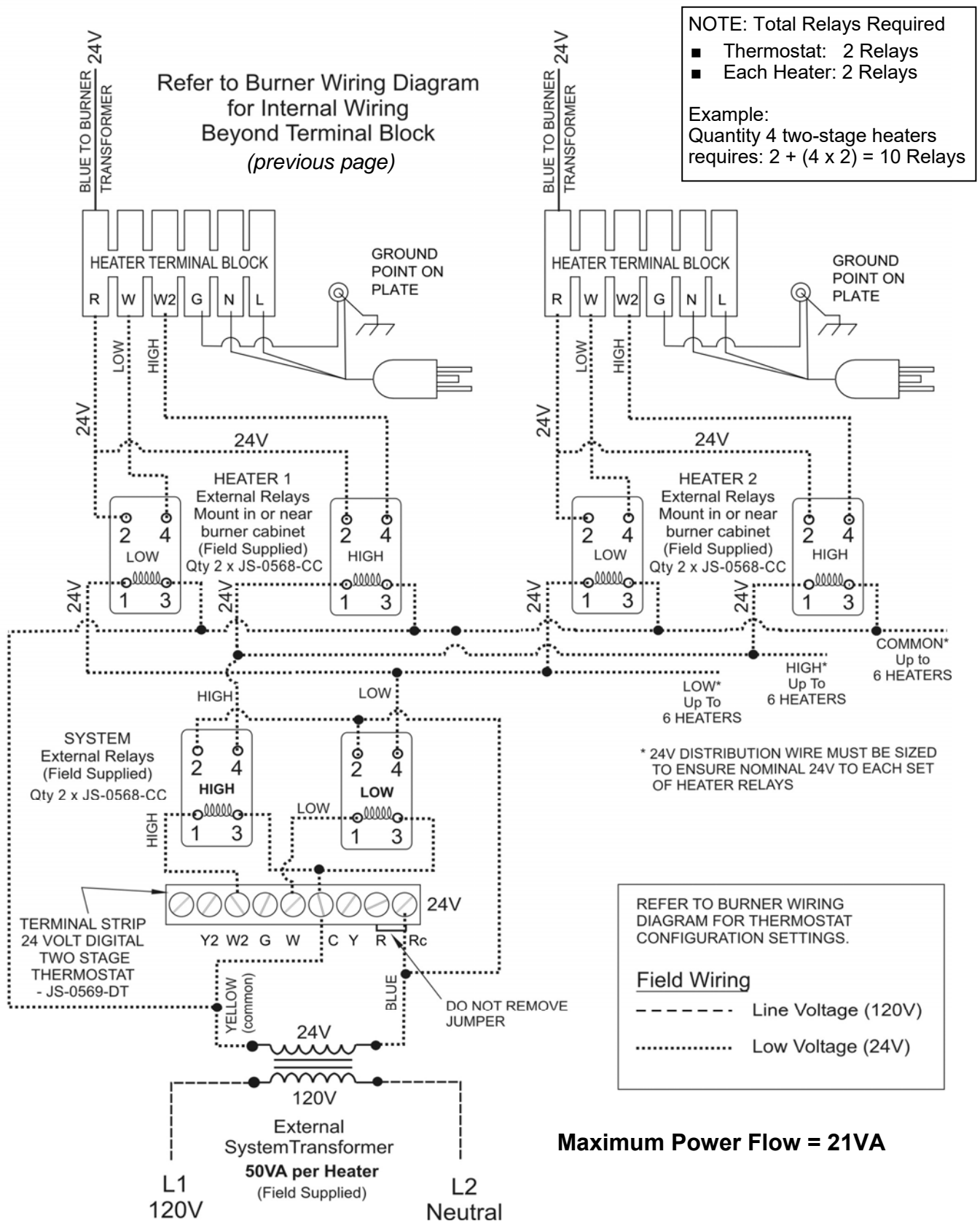
- 1 System Type = 7
- 3 Fan Control = 0
- 5 Heat Cycle Rate = 5
- 6 2nd Stage Heat Cycle Rate = 5
- 12 System Setting = 0
- 14 Temperature Display: °F = 0; °C = 1
- 27 Heat Temp. Range Stops = 80

ALL OTHER SETTINGS REMAIN AT DEFAULT

## 19. WIRING DIAGRAM - MULTIPLE 2-STAGE HEATERS PER 2-STAGE THERMOSTAT

(FOR SINGLE HEATER PER THERMOSTAT SEE PREVIOUS PAGE)

Centrally locate thermostat between heaters or in heater zone



## **20. FENWAL DSI: SEQUENCE OF OPERATION / FLAME RECOVERY / SAFETY LOCKOUT**

### **Power Up / Stand By**

Upon applying 24 volts power to 24VAC, the control will reset, perform a self check routine, initiate full time flame sensing, flash the diagnostic LED for up to four seconds, and enter the thermostat scan state.

### **Heat Mode**

When a call for heat is received from the thermostat supplying 24 volts to TH, the control checks the pressure switch for normally open contacts. The combustion blower is then energized and once the pressure switch contacts close, a 30 second purge delay begins. Following the purge period the gas valve is energized and spark commences for the 15 second trial for ignition.

When flame is detected during the trial for ignition, spark is shutoff immediately and the gas valve combustion blower remains energized. The thermostat, pressure switch, and main burner flame are constantly monitored to assure the system continues to operate properly. When the thermostat is satisfied and the demand for heat ends, the main valve is de-energized immediately, the control senses the loss of flame signal and initiates a 30 second post-purge period before de-energizing the combustion blower.

### **Failure to Light - Lockout (THREE TRIAL MODEL)**

This three-try control will attempt two additional ignition trials with a 30 second inter-purge between trials, before going into 'soft' lockout. The valve relay will be de-energized immediately, and the combustion blower will be turned off following the 30 second post purge period.

If the thermostat continues to call for heat after one hour the control will automatically reset and attempt to ignite the burner again (three trials).

At any time less than the 1 hour auto-reset, recovery from lockout requires a manual reset by either resetting the thermostat or removing 24 volts for a period of 5 seconds.

### **Flame Failure - Re-Ignition**

If the established flame signal is lost while the burner is operating, the control will respond within 0.8 seconds. The HV spark will be energized for a trial ignition period in an attempt to relight the burner. If the burner does not light the control will de-energize the gas valve. Two more attempts will be made to relight the burner. If the burner does not relight the control will go into 'soft' lockout as noted above in "Failure to Light". If flame is re-established, normal operation resumes.

### **Combustion Airflow Problems -Lockout**

Combustion air flow is continually monitored during an ignition sequence by the air flow switch (PSW). If during the initial call for heat the pressure contacts are in the closed position for 30 seconds without an output to the Combustion Blower, an air flow fault will be declared and the control will remain in this mode with the combustion blower off.

If the air flow switch remains open for more than 30 seconds after the combustion blower output (L1 & IND) is energized, an air flow fault will be declared and the control will stay in this mode with the combustion blower on, waiting for the air flow switch to close.

When proper air flow is detected from the air flow switch input (PSW) the control begins the pre-purge period followed with a 15 second ignition sequence.

If the air flow signal is lost while the burner is firing, the control will immediately de-energize the gas valve and the combustion blower will remain on. If the call for heat remains, the control will wait for proper air flow to return. If proper air flow is not detected after 30 seconds an air flow fault signal will be declared. If proper air flow is detected at any time, a normal sequence will begin with the pre-purge period.

## Flame Fault

If at any time the main valve fails to close completely and maintains a flame, the full time flame sense circuit will detect it and energize the combustion blower. Should the main valve later close completely removing the flame signal, the combustion blower will power off following the optional post purge period.

### Fault Conditions

The LED will flash on for 1/4 second, then off for 1/4 second during a fault condition. The pause between fault codes is 3 seconds.

| Error Mode                  | LED Indication |
|-----------------------------|----------------|
| Internal Control Failure    | Steady on      |
| Air Flow Fault              | 1 flash        |
| Flame with No Call for heat | 2 flashes      |
| Ignition Lockout            | 3 flashes      |

### MOUNTING AND WIRING

The Series 35-61 is not position sensitive and can be mounted vertically or horizontally. The case may be mounted on any surface with #6 sheet metal screws. All wiring must be done in accordance with local and national electrical code. Refer to wire diagram in this manual when connecting the Series 35-61 to other components in the burner.



## WARNING

The Series 35-61 DSI Control uses voltages of shock hazard potential. Wiring and initial operation must be done by a qualified service technician. The control must be secured in an area that will experience a minimum of vibration and remain below the operating temperature of 160°F. All connections should be made with UL approved 105°C rated 18 gauge, stranded, .054 thick insulated wire. Refer to wire diagram page 35 when connecting the Series 35-61 to other components in the burner.

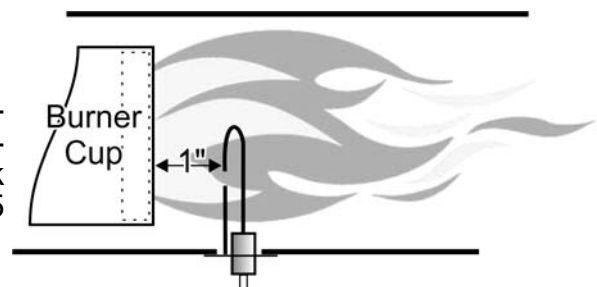
| TERMINAL | SPADE | DESIGNATION                |
|----------|-------|----------------------------|
| TH       | 1/4"  | Thermostat Input           |
| PSW      | 1/4"  | Pressure Switch Input      |
| V1       | 1/8"  | Valve Power (MV)           |
| IND      | 1/4"  | Inducer Blower Output      |
| NC       | -     | Alarm (Not used)           |
| L1       | 1/4"  | 120/240 VAC Input (Hot)    |
| 24 VAC   | 1/4"  | 24 VAC Supply to Processor |
| V2       | 1/8"  | Valve (MV)                 |
| GND      | 1/8"  | Valve & System Ground      |
| Spark    | 1/4"  | Spark & Local Flame Sense  |

### CAUTION:

Label all wires prior to disconnection when servicing controls. Wiring errors can cause improper and dangerous operation. A functional checkout of a replacement control is recommended.

### PROPER ELECTRODE LOCATION

Proper location of the electrode assembly is important for optimum system performance. The electrode assembly should be located so that the spark gap is inside the flame envelope about 1 inch (2.5 cm) from the base of the flame at the burner cup.



Electrodes should have a gap spacing of 3/16" (0.188" ± 0.031" or 4.76 mm ± 0.81 mm). If this spacing is not correct, the assembly must be adjusted or replaced. DO NOT adjust the curved igniter/sensor prong. Adjust/bend only the ground prong (also see next page).

## SPARK IGNITER ADJUSTMENT

Use the following diagram to check the Igniter gap. If the gap is incorrect all adjustments should be made to the **GROUND PRONG/PIN ONLY! DO NOT BEND THE IGNITER PRONG!!!!**

USE THE BLACK BARS BELOW AS A GUIDE FOR ADJUSTMENT. USE THE BARS THAT COINCIDE WITH THE FORMAT & SIZE OF THIS PUBLICATION .

IF this manual is in  
**8.5" x 11" "booklet" format**  
(pages folded in half)  
then use these bars →

3/16"

1/4"

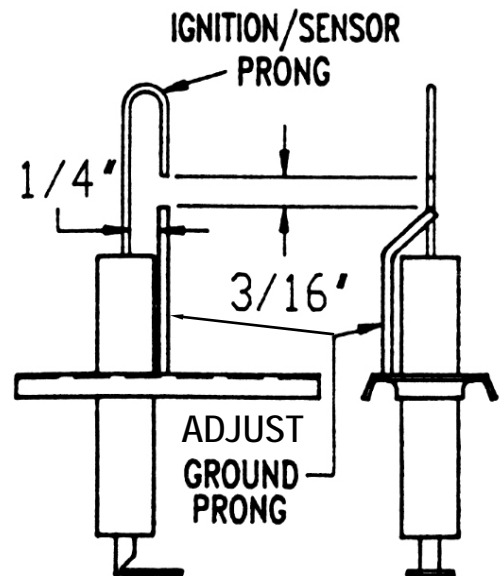


OR

IF this manual is printed  
8.5" x 11" "**full page**" format  
use these bars →

3/16"

1/4"

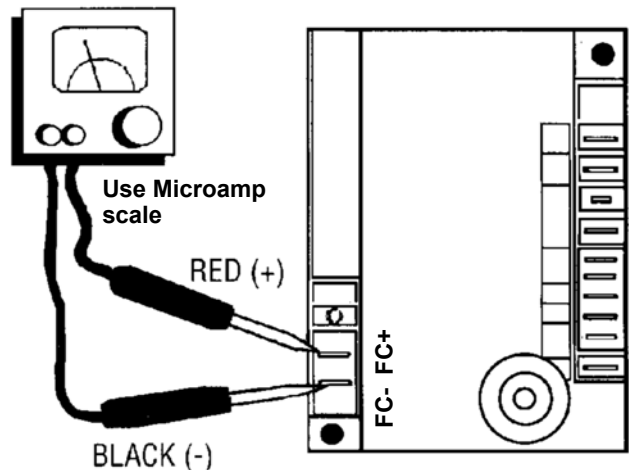


## SERVICE CHECKS

Flame current passes through the flame from the sensor to ground. The minimum flame current necessary to keep the system from lock-out is 0.7 microamps. To measure flame current, connect an analog DC microammeter to the FC- FC+ terminals per figure at right.

Meter should read 0.7  $\mu$ A or higher. If the meter reads below "0" on scale, meter leads are reversed. Disconnect power and reconnect meter leads for proper polarity.

Multipurpose Meter



**21. TROUBLESHOOTING GUIDE - FENWAL DSI**  
*(also see Heater Troubleshooting next page)*

| SYMPTOM   | RECOMMENDED ACTION(S)  |
|---|--|
| <b>1. Dead</b>  | <ul style="list-style-type: none"> <li>A. Miswired - check electrical supply (120Vac <math>\pm</math> 5%)</li> <li>B. Transformer bad (24Vac <math>\pm</math> 10%)</li> <li>C. Fuse/Circuit breaker bad</li> <li>D. Bad control (check LED for steady on)</li> </ul> |
| <b>2. Thermostat on<br/>- no blower output</b>  | <ul style="list-style-type: none"> <li>A. Miswired</li> <li>B. Bad thermostat no voltage @ terminal W</li> <li>C. Bad control (check LED for steady on)</li> </ul>   |
| <b>3. Pressure switch input okay,<br/>but no Trial-for-Ignition<br/>after purge delay</b> | <ul style="list-style-type: none"> <li>A. Miswired (check PSW terminal voltage: 24Vac <math>\pm</math> 10%)</li> <li>B. Flame sense problem (existing flame: check LED - 2 flashes)</li> <li>C. Bad control (check line voltage between L1 &amp; IND)</li> </ul>     |
| <b>4. Valve on, no spark</b>  | <ul style="list-style-type: none"> <li>A. Shorted electrode</li> <li>B. Open HV cable</li> <li>C. Bad control</li> </ul>   |
| <b>5. Spark on, no valve</b>  | <ul style="list-style-type: none"> <li>A. Valve coil open</li> <li>B. Open valve wire</li> <li>C. Bad control (check 24Vac voltage between V1 &amp; V2)</li> </ul>   |
| <b>6. Flame sense during Trial For<br/>Ignition, but no flame sense<br/>after TFI</b>     | <ul style="list-style-type: none"> <li>A. Bad electrode</li> <li>B. Bad HV igniter wire</li> <li>C. Poor ground at burner</li> <li>D. Poor flame (check flame current)</li> </ul>  |

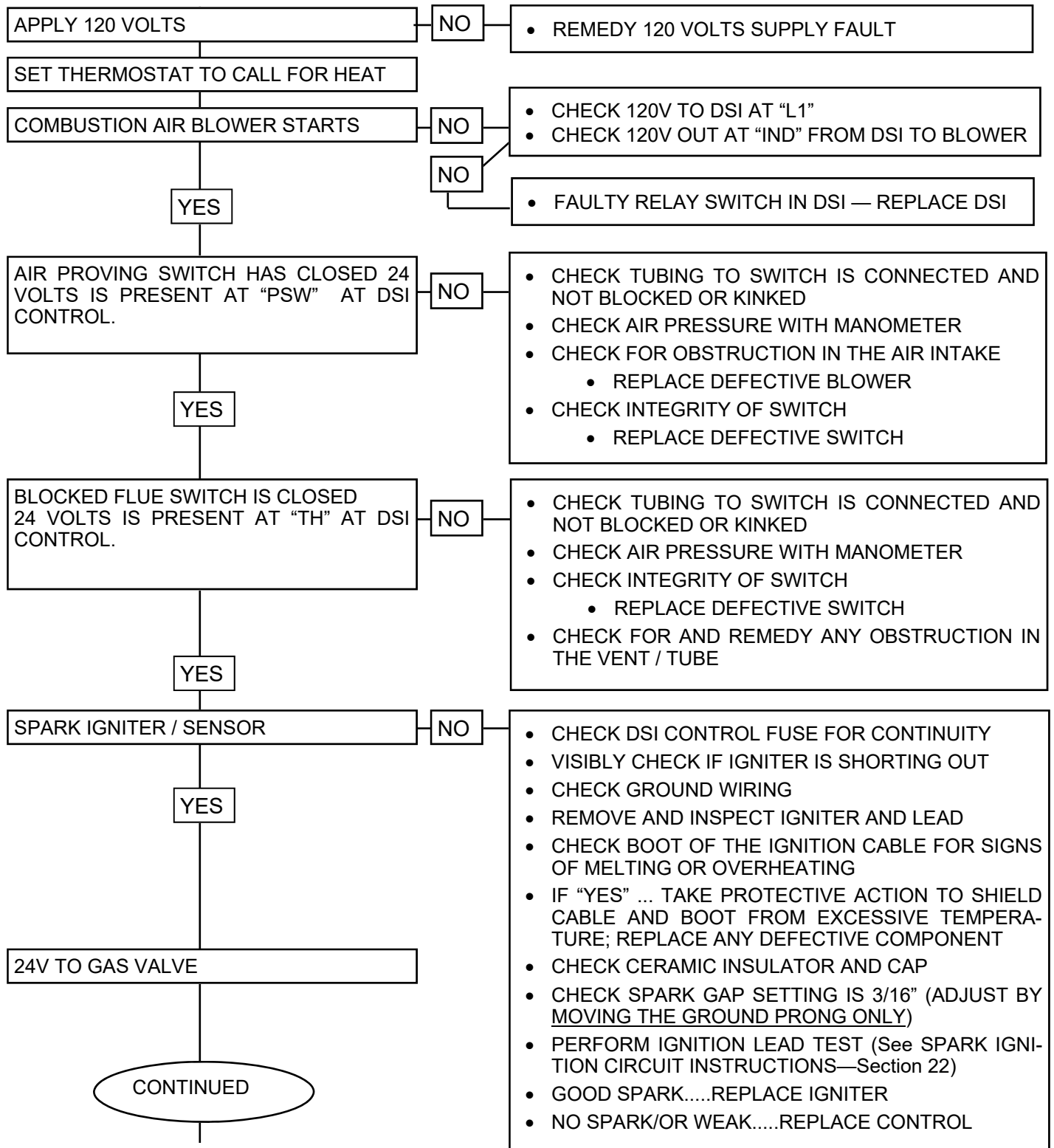
## 22. TROUBLESHOOTING GUIDE - HEATER OPERATION

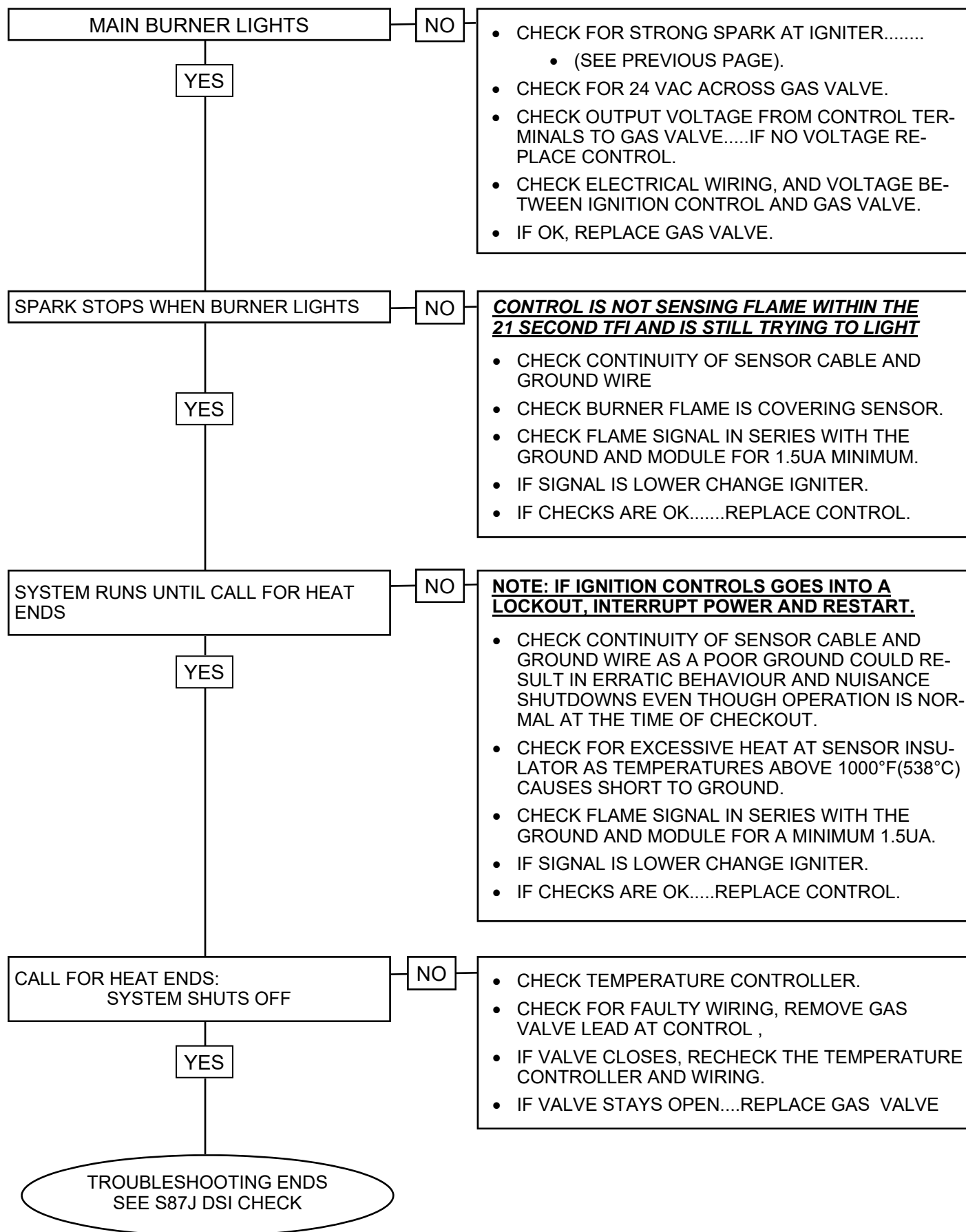


### WARNING

Improper adjustment, alteration, service or maintenance can cause property damage, injury or death. This heater must be

#### SEQUENCE OF EVENTS (also see *DSI Troubleshooting previous page*)







## **23. START-UP / COMMISSIONING SHEET**



**THIS EQUIPMENT HAS BEEN FACTORY FIRED AND TESTED PRIOR TO SHIPMENT. HOWEVER, THIS APPLIANCE IS NOT “PLUG & PLAY”. IT REQUIRES COMMISSIONING AND FIELD ADJUSTMENT / SPECIFICATIONS CONFIRMATION TO ENSURE SAFE AND EFFICIENT OPERATION.**

### **COMMISSIONING REPORT AS PER I&O MANUAL AND LOCAL/NATIONAL CODES**

CONTRACTOR: \_\_\_\_\_

STREET: \_\_\_\_\_

CITY: \_\_\_\_\_ STATE/PROV: \_\_\_\_\_ ZIP: \_\_\_\_\_

PHONE: \_\_\_\_\_ CELL: \_\_\_\_\_

JOB NAME: \_\_\_\_\_

CITY: \_\_\_\_\_ STATE/PROV: \_\_\_\_\_

HEATER MODEL NUMBER : \_\_\_\_\_

*Located on burner rating plate*

HEATER SERIAL NUMBER : \_\_\_\_\_

*Located on burner rating plate*

**TO ENSURE THAT SITE CONDITIONS ARE COMPATIBLE WITH THE HEATER’S PERFORMANCE AND TO ALLEVIATE NUISANCE CALL-BACKS, THE COMMISSIONING REPORT (next page) NEEDS TO BE COMPLETED BY THE QUALIFIED GAS INSTALLER.**

**A CALL FOR TECHNICAL SUPPORT MUST PROVIDE THE INFORMATION FROM THE COMPLETED COMMISSIONING REPORT ON THE NEXT PAGE**

**TECHNICAL SERVICES:**

**FAX 1-866-361-0523,**

**VOICE 1-877-446-3727**



## **WARNING**

### **START UP ‘SMOKE’**

During start up, material coatings used in the production process of tubes and reflectors will “burn off” and create smoke during the first hour of operation. This is temporary and normal.

Please ensure that there is sufficient ventilation to adequately clear the smoke from the space.

Notify site and safety personnel to ensure that alarm systems are not unduly activated.

## **QUALIFIED INSTALLER TO COMPLETE THIS TUBE HEATER COMMISSIONING REPORT**

**REFER TO THIS COMPLETED REPORT WHEN CALLING TECHNICAL SERVICES: 1-877-446-3727**

|  |                      |                          |        |                          |
|--|----------------------|--------------------------|--------|--------------------------|
| TYPE OF GAS  | NG                   | <input type="checkbox"/> | LP     | <input type="checkbox"/> |
| HAS A MANUFACTURER'S GAS CONVERSION KIT BEEN INSTALLED               | YES                  | <input type="checkbox"/> | NO     | <input type="checkbox"/> |
| DOES BUILDING HAVE A 'NEGATIVE AIR' CONDITION                        | YES                  | <input type="checkbox"/> | NO     | <input type="checkbox"/> |
| IS HEATER EXPOSED TO CHEMICAL OR CORROSIVE ATMOSPHERE                | YES                  | <input type="checkbox"/> | NO     | <input type="checkbox"/> |
| ■ IS 'OUTSIDE COMBUSTION AIR' REQUIRED TO THE BURNER                 | YES                  | <input type="checkbox"/> | NO     | <input type="checkbox"/> |
| MINIMUM CLEARANCES CONFORM TO REQUIREMENTS OF THIS MANUAL            | YES                  | <input type="checkbox"/> | NO     | <input type="checkbox"/> |
| WHAT IS THE ALTITUDE OF THIS PROJECT LOCATION ABOVE SEA LEVEL        | <input type="text"/> |                          | FEET   |                          |
| ■ IS ALTITUDE ADJUSTMENT REQUIRED? (See Section 27, Page 47)         | YES                  | <input type="checkbox"/> | NO     | <input type="checkbox"/> |
| CAN HEATER BE AFFECTED BY OVERHEAD CRANES / VIBRATION                | YES                  | <input type="checkbox"/> | NO     | <input type="checkbox"/> |
| THE GAS SUPPLY PIPING IS ADEQUATELY SIZED FOR SYSTEM VOLUME          | YES                  | <input type="checkbox"/> | NO     | <input type="checkbox"/> |
| GAS SUPPLY LINES AND BRANCHES HAVE BEEN PURGED OF AIR                | YES                  | <input type="checkbox"/> | NO     | <input type="checkbox"/> |
| INLET GAS SUPPLY PRESSURE WITH ALL HEATERS OPERATING                 | <input type="text"/> |                          | " WC   |                          |
| MANIFOLD PRESSURE WITH HEATER OPERATING                              | <input type="text"/> |                          | " WC   |                          |
| LINE VOLTAGE READING AT THE HEATER                                   | <input type="text"/> |                          | VOLTS  |                          |
| VOLTAGE READING AT IGNITION MODULE                                   | <input type="text"/> |                          | VOLTS  |                          |
| IS THE HEATER PROPERLY ELECTRICALLY GROUNDED                         | YES                  | <input type="checkbox"/> | NO     | <input type="checkbox"/> |
| FLAME SIGNAL STRENGTH FROM SENSOR (µA microamps)                     | <input type="text"/> |                          | µA     |                          |
| IS THE HEATER CONTROLLED BY A THERMOSTAT                             | YES                  | <input type="checkbox"/> | NO     | <input type="checkbox"/> |
| IS THE THERMOSTAT STRATEGICALLY LOCATED                              | YES                  | <input type="checkbox"/> | NO     | <input type="checkbox"/> |
| 'MAXIMUM STACK HEIGHT' SIGN(S) POSTED AT THERMOSTAT(S)               | YES                  | <input type="checkbox"/> | NO     | <input type="checkbox"/> |
| TOTAL LENGTH OF LOW VOLTAGE THERMOSTAT WIRE                          | <input type="text"/> |                          | FEET   |                          |
| GAUGE OF THE LOW VOLTAGE THERMOSTAT WIRE                             | <input type="text"/> |                          | GAUGE  |                          |
| WHAT IS THE HEATER TUBE LENGTH (10 ft per tube section)              | <input type="text"/> |                          | FEET   |                          |
| WHAT IS THE TOTAL LENGTH OF THE VENT (Add 5 ft for each 90° elbow)   | <input type="text"/> |                          | FEET   |                          |
| WHAT LENGTH IS THE COMBUSTION AIR DUCT (Add 5 ft for each 90° elbow) | <input type="text"/> |                          | FEET   |                          |
| WHAT IS THE TOTAL TURBULATOR LENGTH (See Section 26, Pages 45-46)    | <input type="text"/> |                          | INCHES |                          |
| IS THE TURBULATOR IN THE PROPER LOCATION IN THE SYSTEM (Page 46)     | YES                  | <input type="checkbox"/> | NO     | <input type="checkbox"/> |
| THIS HEATER TEST FIRED WITHOUT MALFUNCTION                           | YES                  | <input type="checkbox"/> | NO     | <input type="checkbox"/> |

## 24. MODEL BTUH INPUT RATINGS AND CORRESPONDING DIMENSIONS

| SET / ITT<br>MODEL | HIGH-FIRE<br>INPUT<br>(BTUH) | LOW-FIRE<br>INPUT<br>(BTUH) | SET / ITT<br>MODEL | NOMINAL<br>TUBE<br>LENGTH<br>(FT) | OVERALL<br>HEATER<br>LENGTH *<br>(FT) | APPROX<br>NET<br>WEIGHT **<br>(LBS) |
|--------------------|------------------------------|-----------------------------|--------------------|-----------------------------------|---------------------------------------|-------------------------------------|
| 200/140            | 195,000                      | 140,000                     | 200/140            | 60                                | 60'                                   | 282                                 |
|                    |                              |                             |                    | 50                                | 50' 4"                                | 239                                 |
| 175/125            | 162,000                      | 115,000                     | 175/125            | 60                                | 60'                                   | 282                                 |
|                    |                              |                             |                    | 50                                | 50' 4"                                | 239                                 |
| 155/110 NG         | 150,000                      | 110,000                     | 155/110            | 50                                | 50' 4"                                | 239                                 |
| 155/110 LP         | 145,000                      | 100,000                     |                    | 40                                | 40' 8"                                | 197                                 |
| 130/90 NG          | 120,000                      | 85,000                      | 130/90             | 30 & 40                           | 40' 8"                                | 197                                 |
| 130/90 LP          | 117,000                      | 77,000                      | 130/90             | 40 ONLY                           | 31'                                   | 154                                 |
| 110/75 NG          | 110,000                      | 80,000                      | 110/75             | 40                                | 40' 8"                                | 197                                 |
| 110/75 LP          | 108,000                      | 70,000                      |                    | 30                                | 31'                                   | 154                                 |
| 80/60 NG           | 78,000                       | 58,000                      | 80/60              | 30                                | 31'                                   | 154                                 |
| 80/60 LP           | 78,000                       | 52,000                      |                    | 20                                | 21' 4"                                | 111                                 |

→ Packaged in 10 ft lengths.

→ Swaged tube has approximate 4 inch (10 cm) overlap -

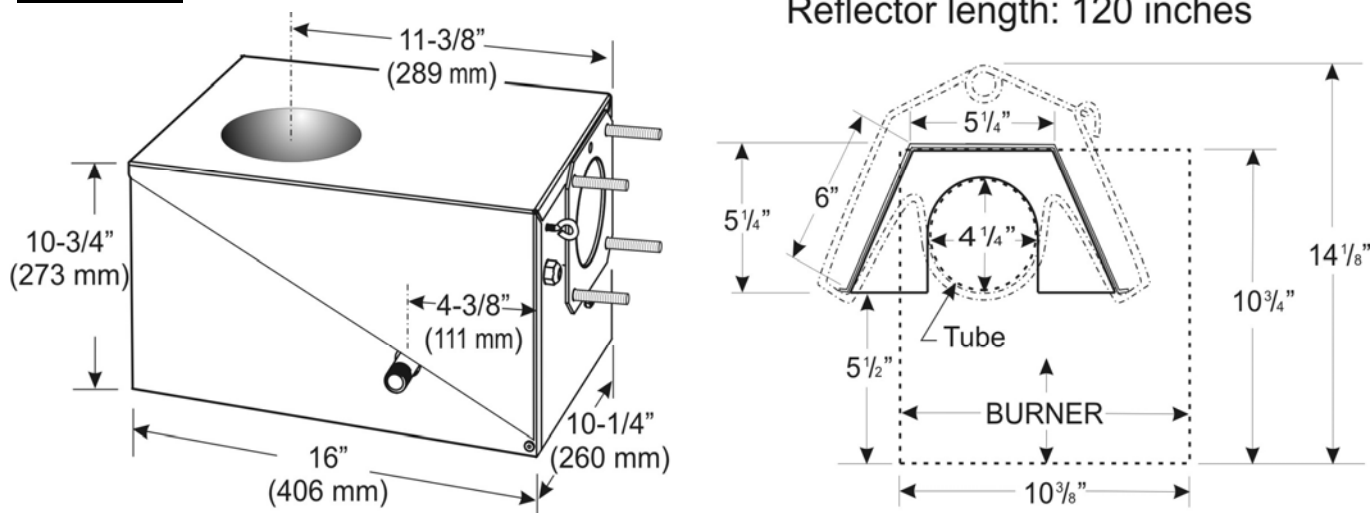
- Net length of first and intermediate tubes is 116 inches (295 cm)
- Last tube is 120" (305 cm) [the 4 inch swage length is exposed for vent connection]
- Total tube length is approximately 4 inches (10 cm) shorter for each multiple of 10 feet (305 cm)

\* Overall heater length includes: Burner length + All Tubes length

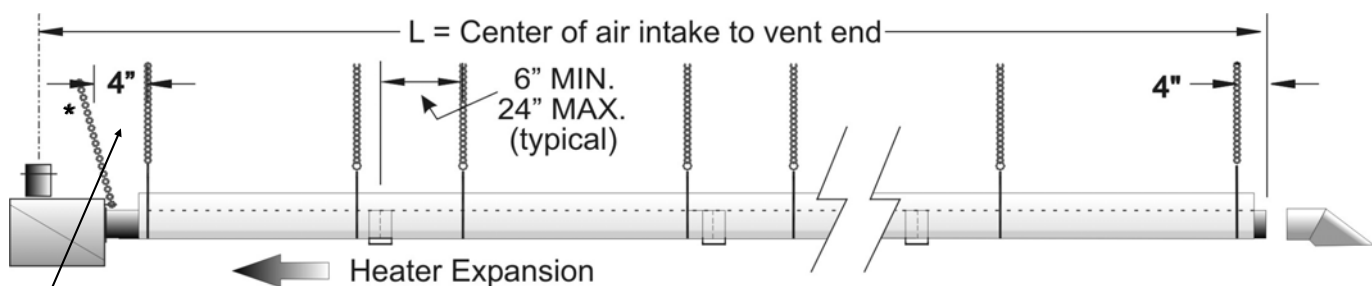
\*\* Burner weight is 26 pounds (11.8 kg)

Each 10 ft (305 cm) tube/reflector section weighs 82 pounds (37.2 kg)

**FIGURE 21 BURNER DIMENSIONS**



**FIGURE 22 HANGER SPACING / LENGTH - AIR INTAKE TO VENT END**



- POSITION BURNER END HANGER 4 INCHES (10 CM) FROM BURNER
- LOCATE SYSTEM HANGERS NO LESS THAN 6 INCHES (15 CM) AND NO MORE THAN 24 INCHES (61 CM) FROM TUBE COUPLING
- \* ANGLE BURNER SUPPORT CHAIN BACK OVER BURNER - ALLOWS TUBE SYSTEM EXPANSION

| <u>Tube Length</u> | <u>'L' = center air intake to vent end</u> | <u>Tube Length</u> | <u>'L' = center air intake to vent end</u> |
|--------------------|--|--------------------|--|
| 20'                | 20'-11 3/4" ; 251 3/4" ; 628 cm            | 50'                | 49'-11 3/4" ; 599 3/4" ; 1523 cm           |
| 30'                | 30'-7 3/4" ; 367 3/4" ; 934 cm             | 60'                | 59'-7 3/4" ; 715 3/4" ; 1818 cm            |
| 40'                | 40'-3 3/4" ; 483 3/4" ; 1229 cm            |                    |  |

## 25A. BURNER & TUBE KIT ASSEMBLY CHART MODELS SET / ITT

MODELS SET & ITT are approved for indoor commercial / industrial non-residential applications. For outdoor, wet and harsh environment applications refer to models SPW-JZ / IWP (powder coated burner box) and/or STW-JZ / IW (stainless steel burner box).



**BEFORE INSTALLING: ENSURE you have the CORRECT TUBE KIT(s) for the BURNER INPUT**

|                                  |     | 'SET / ITT' TUBE KIT PART # & QUANTITY REQUIRED |            |            |              |            |                |            |  |
|----------------------------------|-----|---|------------|------------|--------------|------------|----------------|------------|--|
|                                  |     | Stand-Alone Kits                                |            |            | Primary Kits |            | Secondary Kits |            |  |
| Tube Kit Shipping Weight (lbs) → |     | 120   | 170        | 210        | 165          | 165        | 120            | 165        |  |
| Nominal Length (ft) →            |     | 20'   | 30'        | 40'        | 30'          | 30'        | 20'            | 30'        |  |
| MODEL                            |     | TM-1420-SX                                      | TM-1430-SX | TM-1040-SX | TM-F030-SX   | TM-1030-SX | TM-0020-SX     | TM-0030-SX |  |
| 80/60                            | 20' | 1   |            |            |              |            |                |            |  |
|                                  | 30' |   | 1          |            |              |            |                |            |  |
| 110/75                           | 30' |   | 1          |            |              |            |                |            |  |
|                                  | 40' |   |            | 1          |              |            |                |            |  |
| 130/90 NG ONLY<br>130/90 NG & LP | 30' |   | 1          |            |              |            |                |            |  |
|                                  | 40' |   |            | 1          |              |            |                |            |  |
| 155/110                          | 40' |   |            | 1          |              |            |                |            |  |
|                                  | 50' |   |            |            | 1+           |            | 1              | 1          |  |
| 175/125                          | 50' |   |            |            |              | 1+         | 1              |            |  |
|                                  | 60' |   |            |            |              | 1+         |                | 1          |  |
| 200/140                          | 50' |   |            |            |              | 1+         | 1              |            |  |
|                                  | 60' |   |            |            |              | 1+         |                | 1          |  |

### TUBE KITS (Not emissive coated)

**Stand-Alone** tube kits require no additional tube kits.

**Primary** tube kits require at least one additional Secondary tube kit.

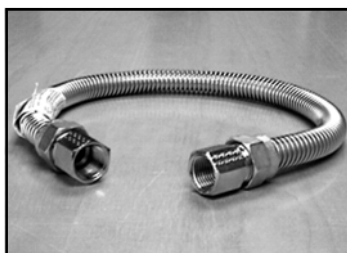
**Secondary** tube kit require a Primary tube kit.

FLEXIBLE GAS CONNECTOR (Included in Burner Kit) - MUST INSTALL - see Section 13

#### USA - Stainless Steel Flexible Gas Connector

130,000 or less:  
JL-0771-XX - 1/2"x24"

155,000 or more:  
JL-0771-YY - 3/4"x36"



#### CANADA - Type 1 Hose Gas Connector

130,000 or less:  
JL-0771-RC - 1/2"x36"

155,000 or more:  
JL-0771-RB - 3/4"x36"



## 25B. BURNER & TUBE KIT ASSEMBLY CHART MODELS SETU / ITTU

MODELS SETU & ITTU are approved for indoor commercial / industrial non-residential applications. For outdoor, wet and harsh environment applications refer to models SPW-JZ / IWP (powder coated burner box) and/or STW-JZ / IW (stainless steel burner box).



**BEFORE INSTALLING: ENSURE you have the CORRECT TUBE KIT(s) for the BURNER INPUT**

|                                  |         | SETU / ITTU TUBE KIT PART # & QUANTITY REQUIRED |            |            |            |            |            |
|----------------------------------|---------|---|------------|------------|------------|------------|------------|
|                                  |         | Stand-Alone **                                  |            |            | Primary ** |            | 2ndary     |
| Tube Kit Shipping Weight (lbs) → |         | 100   | 145        | 170        | 170        | 170        | 65         |
| Tube Length (ft) →               |         | 10' x 2   | 15' x 2    | 20' x 2    | 20' x 2    | 20' x 2    | 10' x 2    |
| MODEL                            |         | TM-1410-SU                                      | TM-1415-SU | TM-1020-SU | TM-0020-SU | TM-A120-SU | TM-0010-SU |
| 80/60                            | 2 x 10' | 1   |            |            |            |            |            |
|                                  | 2 x 15' |   | 1          |            |            |            |            |
| 110/75                           | 2 x 15' |   | 1          |            |            |            |            |
|                                  | 2 x 20' |   |            | 1          |            |            |            |
| 130/90 NG ONLY                   | 2 x 15' |   | 1          |            |            |            |            |
| 130/90 NG & LP                   | 2 x 20' |   |            | 1          |            |            |            |
| 155/110                          | 2 x 20' |   |            | 1          |            |            |            |
|                                  | 2 x 30' |   |            |            | 1+         |            | 1          |
| 175/125                          | 2 x 30' |   |            |            |            | 1+         | 1          |
| 200/140                          | 2 x 30' |   |            |            |            | 1+         | 1          |

**\*\* These kits include Turn Box JS-0513-BU packed and shipped in a separate carton**

### **TUBE KITS (Not emissive coated)**

**Stand-Alone tube kits require no additional tube kits.**

**Primary tube kits require at least one additional Secondary tube kit.**

**Secondary tube kit require a Primary tube kit.**

**FLEXIBLE GAS CONNECTOR (Included in Burner Kit) - MUST INSTALL - see Section 13**

#### **USA - Stainless Steel Flexible Gas Connector**

130,000 or less:  
JL-0771-XX - 1/2"x24"

155,000 or more:  
JL-0771-YY - 3/4"x36"



#### **CANADA - Type 1 Hose Gas Connector**

130,000 or less:  
JL-0771-RC - 1/2"x36"

155,000 or more:  
JL-0771-RB - 3/4"x36"



## 26. TURBULATORS:



**NOTE:** Improper location of a turbulator can cause malfunction of the heater, property damage, and will void the heater warranty.

Tube Heaters are supplied with all required turbulator(s) factory installed into the tube(s) and are clearly labeled for identification. Refer to tables below, and illustration next page for turbulator lengths and locations in system.

### STRAIGHT TUBE MODELS:

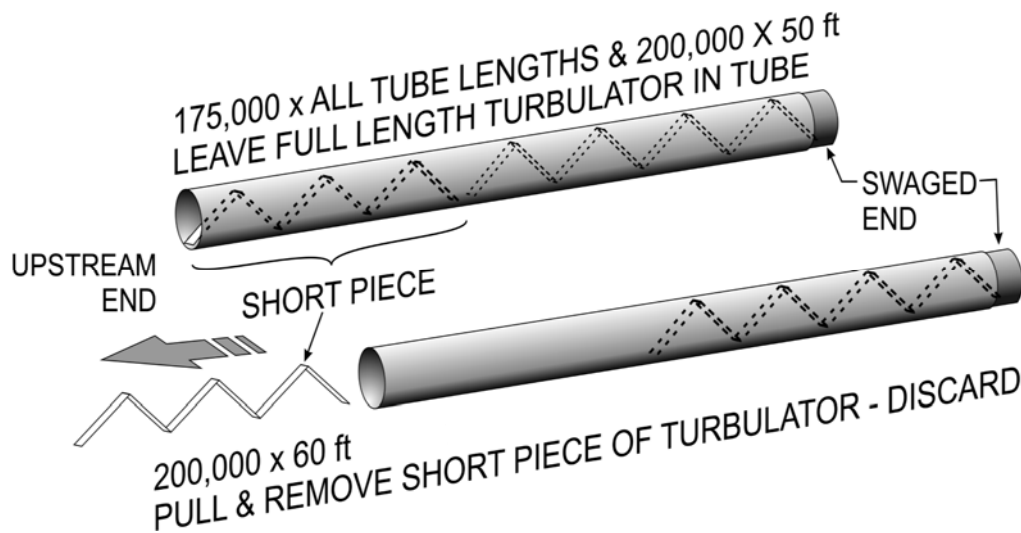
| MODEL                            | TURBULATOR LENGTH |
|----------------------------------|-------------------|
| SET / ITT 200/140 x 60           | 72" *             |
| SET / ITT 200/140 x 50           | 40" + 72"         |
| SET / ITT 175/125 x 50 & 60      | 40" + 72"         |
| SET / ITT 155/110 x 50           | 24"               |
| SET / ITT 155/110 x 40           | 24" + 109"        |
| SET / ITT 130/90 x 40            | 24" + 109"        |
| SET / ITT 130/90 x 30<br>NG ONLY | 60" + 96"         |
| SET / ITT 110/75 x 40            | 24" + 109"        |
| SET / ITT 110/75 x 30            | 60" + 96"         |
| SET / ITT 80/60 x 30             | 60" + 96"         |
| SET / ITT 80/60 x 20             | 39" + 96"         |

### U-TUBE MODELS:

| MODEL                               | TURBULATOR LENGTH |
|-------------------------------------|-------------------|
| SETU / ITTU 200/140 - 30U           | 72" *             |
| SETU / ITTU 175/125 - 30U           | 40" + 72"         |
| SETU / ITTU 155/110 - 20U           | 24" + 109"        |
| SETU / ITTU 130/90 - 20U            | 24" + 109"        |
| SETU / ITTU 130/90 - 15U<br>NG ONLY | 24" + 109"        |
| SETU / ITTU 110/75 - 20U            | 24" + 109"        |
| SETU / ITTU 110/75 - 15U            | 60" + 96"         |
| SETU / ITTU 80/60 - 15U             | 60" + 96"         |
| SETU / ITTU 80/60 - 10U             | 39" + 96"         |

### Prior to installation:

\* **200/140x60 ft:** Remove and discard 40" turbulator from the upstream end of last tube

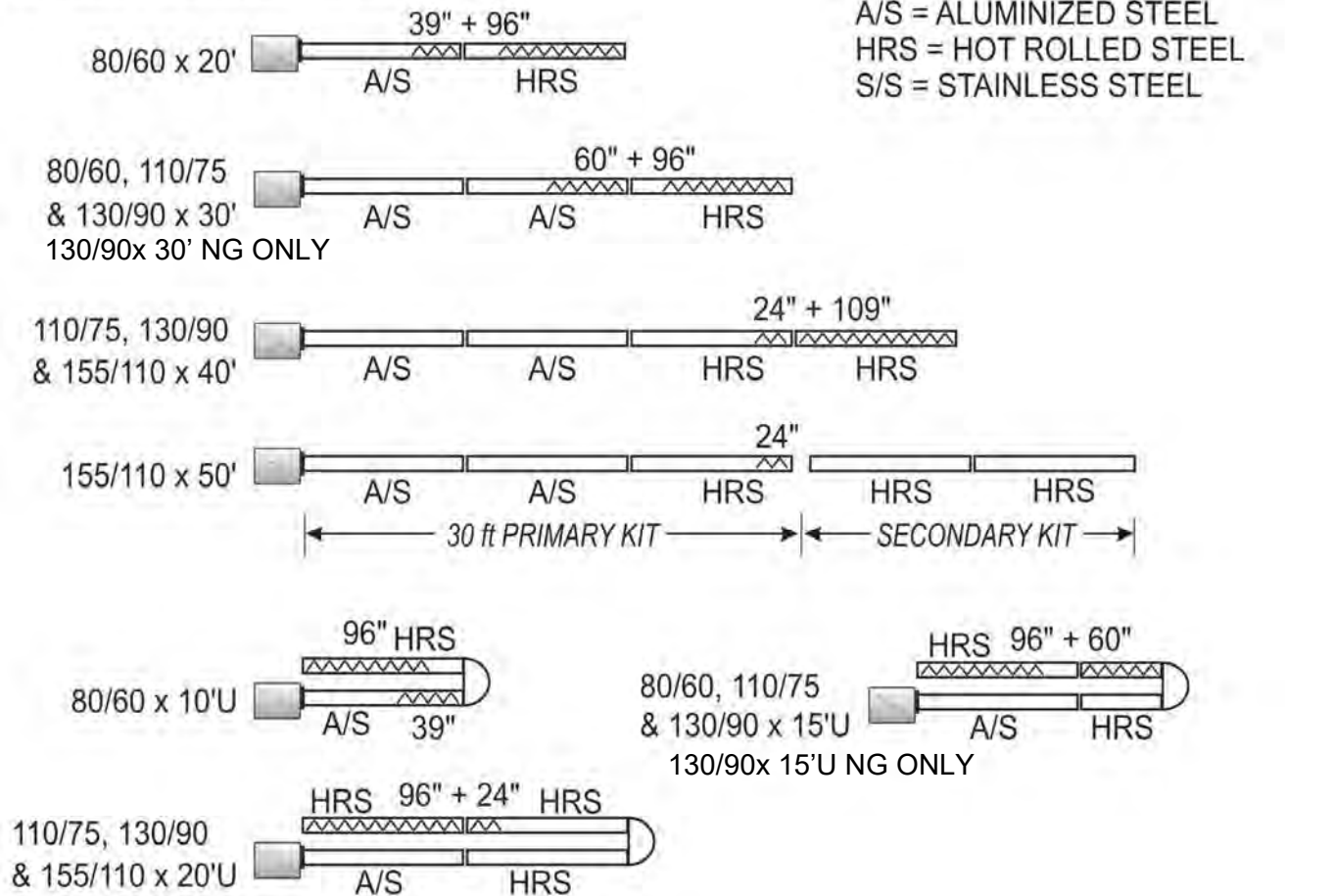


## TURBULATOR LENGTH & LOCATION IN SYSTEM:

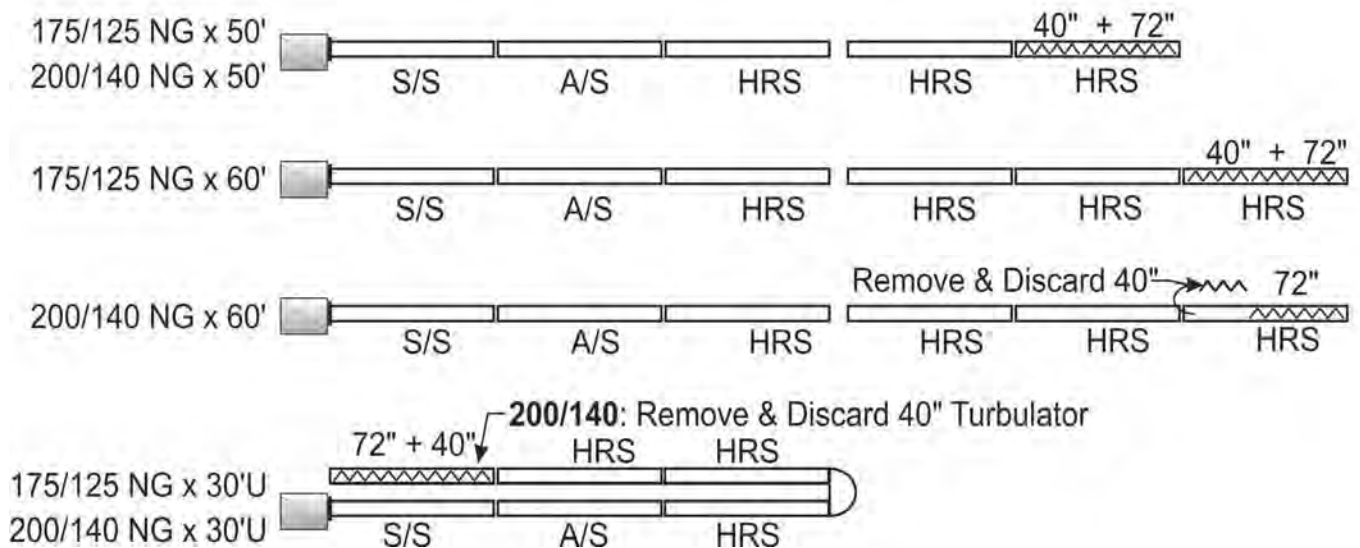
### 2-STAGE MODEL x LENGTH:

### TUBE MATERIAL LEGEND:

A/S = ALUMINIZED STEEL  
HRS = HOT ROLLED STEEL  
S/S = STAINLESS STEEL



NOTE: FOR FOLLOWING MODELS THE TUBE WITH TURBULATOR(S) IS PACKAGED IN THE 30 FT PRIMARY TUBE KIT  
BUT IS INSTALLED AT THE VENT END OF THE SYSTEM





## 27. HIGH ALTITUDE INSTALLATION

When this appliance is installed above the altitude stipulated below, the input must be de-rated by 4% for each 1000 ft . **If your local utility supplies gas with a de-rated heat content, no orifice change is required in the heater** . Check with your local utility regarding de-rating, and the following specifically for country of installation:

**USA:** The factory installed orifice for this appliance is approved for altitudes zero to 2000 feet above sea level. Installation beyond 2000': Please refer to ANSI Z223.1 National Fuel Gas Code, which requires to de-rate 4% per 1000' above sea level.

**Canada:** The factory installed orifice for this appliance is approved for altitudes zero to 4500 feet above sea level. When installed above 4500 feet, refer to the Local Provincial Authority having jurisdiction.

Also refer to 'Total System Length Restrictions' for altitudes above 4500 ft on next page.

### SCHWANK/INFRAHAVE RECOMMENDED ORIFICE CHART - ALTITUDE CONVERSION

| SET / ITT<br>MODEL       | FOR USE AT ALTITUDES GREATER THAN (FEET)<br>Gas Orifice Drill Size / Part# |                    |                     |                      |                      |                      |                    |                      |
|--------------------------|--|--------------------|---------------------|----------------------|----------------------|----------------------|--------------------|----------------------|
|                          | Supplied   | USA Only           |                     |                      | USA & CANADA*        |                      |                    |                      |
|                          | 0 - 2000 ft  | > 2000             | > 3000              | > 4000               | > 4500               | > 6000               | > 7000             | > 8000               |
| 80/60 NG                 | # 17<br>JS-0717-DM   | #19<br>JS-0719-DM  | # 19<br>JS-0719-DM  | # 20<br>JS-0720-DM   | # 20<br>JS-0720-DM   | # 22<br>JS-0722-DM   | # 23<br>JS-0723-DM | # 24<br>JS-0724-DM   |
| 80/60 LPG                | # 38<br>JS-0738-DM   | # 40<br>JS-0740-DM | # 41<br>JS-0741-DM  | # 41<br>JS-0741-DM   | 3/32"<br>JS-0709-IN  | # 42<br>JS-0742-DM   | # 42<br>JS-0742-DM | # 43<br>JS-0743-DM   |
| 110/75 NG                | # 3<br>JS-0703-DM  | # 5<br>JS-0705-DM  | # 6<br>JS-0706-DM   | # 7<br>JS-0707-DM    | # 8<br>JS-0708-DM    | # 10                 | # 11<br>JS-0711-DM | 3/16"<br>JS-0719-IN  |
| 110/75 LPG               | # 31<br>JS-0731-DM   | # 32<br>JS-0732-DM | # 32<br>JS-0732-DM  | # 33<br>JS-0733-DM   | # 34<br>JS-0734-DM   | # 35<br>JS-0735-DM   | # 36<br>JS-0736-DM | # 36<br>JS-0736-DM   |
| 130/90 NG                | # 1<br>JS-0701-DM  | # 2<br>JS-0702-DM  | 7/32"<br>JS-0722-IN | # 3<br>JS-0703-DM    | # 3<br>JS-0703-DM    | # 4<br>JS-0704-DM    | # 6<br>JS-0706-DM  | # 7<br>JS-0707-DM    |
| 130/90 LPG<br>40 ft ONLY | # 30<br>JS-0730-DM   | 1/8"<br>JS-0713-IN | 1/8"<br>JS-0713-IN  | # 31<br>JS-0731-DM   | # 31<br>JS-0731-DM   | # 32<br>JS-0732-DM   | # 32<br>JS-0732-DM | # 33<br>JS-0733-DM   |
| 155/110 NG               | 1/4"<br>JS-0725-IN   | # C<br>JS-070C-NS  | # B<br>JS-070B-NS   | 15/64"<br>JS-0723-IN | # A<br>JS-070A-NS    | # 1<br>JS-0701-DM    | # 2<br>JS-0702-DM  | # 2<br>JS-0702-DM    |
| 155/110 LPG              | 9/64"<br>JS-0714-IN  | # 29<br>JS-0729-DM | # 29<br>JS-0729-DM  | 3.4 mm<br>JS-0734-MM | 3.3 MM<br>JS-0733-MM | 3.3 MM<br>JS-0733-MM | 1/8"<br>JS-0713-IN | 1/8"<br>JS-0713-IN   |
| 175/125 NG               | 6.7 mm<br>JS-0767-MM   | # F<br>JS-070F-NS  | 1/4"<br>JS-0725-IN  | 1/4"<br>JS-0725-IN   | # D<br>JS-070D-NS    | # C<br>JS-070C-NS    | # B<br>JS-070B-NS  | # A<br>JS-070A-NS    |
| 200/140 NG               | # N<br>JS-070N-NS  | # M<br>JS-070M-NS  | # L<br>JS-070L-NS   | # L<br>JS-070L-NS    | # K<br>JS-070K-NS    | # J<br>JS-070J-NS    | # I<br>JS-070I-MM  | 17/64"<br>JS-0727-IN |

## 27. HIGH ALTITUDE INSTALLATION - Total System Length Restrictions

**NOTE:** Installations above 4,500 ft: Restrict the Total Combined System Length as indicated in the **TOTAL SYSTEM LENGTH RESTRICTIONS** Table below.

**MINIMUM VENT LENGTH:** (Vented or Unvented [indirect mechanical ventilation])

- Minimum vent length of 3 ft (91 cm) is required (NOTE: 200,000 LP: Minimum 8 ft (244 cm))

**HIGH ALTITUDE MAXIMUM SYSTEM LENGTH (above 4,500 ft) :**

**includes:** Tube Heater length + combustion air duct + vent:





- Each 90° elbow in the system has an equivalent length of 5 ft.
- A maximum of 2 elbows are allowed in any portion (duct, tube heater, vent) with the exception of up to three 90° elbows in a vertical vent run through the roof
- Combustion air duct may be 4" or 5" diameter and is not to exceed lengths in table below
- Exceeding the allowable lengths in the table below can create combustion and/or condensation problems and will void CSA Certification and the heater warranty.
- Do not exceed the **Maximum Combined System Length** regardless of the allowed maximum length of individual vent or combustion air duct

### **TOTAL SYSTEM LENGTH RESTRICTIONS:**

**INSTALLATIONS ABOVE 4,500 FEET** (*Lower altitudes refer to Section 11A*)

| SET / ITT Model | Do Not Exceed Max. Combined System Length* |                    | Max. Vent Length*<br>Individual: 4" Ø<br>Combined: 6" Ø | Max. Air Duct Length*<br>(by Duct Diameter) |       | Example   |
|-----------------|--|--------------------|---|---|-------|---|
|                 | With 4" Ø Air Duct                         | With 5" Ø Air Duct |   | 4" Ø  | 5" Ø  |   |
| 80 / 60         | 60 ft                                      | 80 ft              | Up to 20 ft   | 20 ft                                       | 40 ft | <b>155/110 Model:</b><br><br>Tube Heater Length      40 ft<br>1 x 90° elbow (vent)      5 ft<br>Straight vent                15 ft<br>1 x 90° elbow (duct)      5 ft<br>Air Duct: 4" Ø <u>13 ft</u><br>Combined Length           78 ft<br>Max. Allowed                80 ft<br>Up To Additional 20' if 5"Ø Air Duct |
| 110 / 75        | 80 ft                                      | 100 ft             | Up to 30 ft   | 20 ft                                       | 40 ft |   |
| 130 / 90        | 80 ft                                      | 100 ft             | Up to 30 ft   | 20 ft                                       | 40 ft |   |
| 155 / 110       | 80 ft                                      | 100 ft             | Up to 30 ft   | 30 ft                                       | 50 ft |   |
| 175 / 125       | 100 ft                                     | 120 ft             | Up to 40 ft   | 30 ft                                       | 50 ft |   |
| 200 / 140       | 100 ft                                     | 120 ft             | Up to 40 ft   | 30 ft                                       | 50 ft |   |
|                 |  |                    |   |   |       |   |

## 28. OPTIONAL ACCESSORIES

|   |                                     |  |
|---|-------------------------------------|--|
| <p><b>#2 Lion Chain</b> (115 lb work load)<br/>- 200 ft roll</p> <p><b>'S' Hooks</b> - 1 7/8" - package of 25</p>                         | <p>JL-0800-XX</p> <p>JL-0798-SH</p> |    |
| <p><b>Flue Vent Terminal</b></p> <p>4" wall horizontal</p> <p>6" wall horizontal</p>  | <p>JA-0528-XX</p> <p>JA-0529-XX</p> |   |
| <p><b>Torctite Coupler</b></p> <p>Sufficient quantity supplied with heater</p> <p>Use for connection of vent tee, or replacement part</p> | <p>JA-0516-SW</p>                   |  |
| <p><b>Vent Tee</b> 4" X 4" X 6"</p> <p>(Couplers optional - see above)</p>  | <p>JA- 0514-XX</p>                  |  |

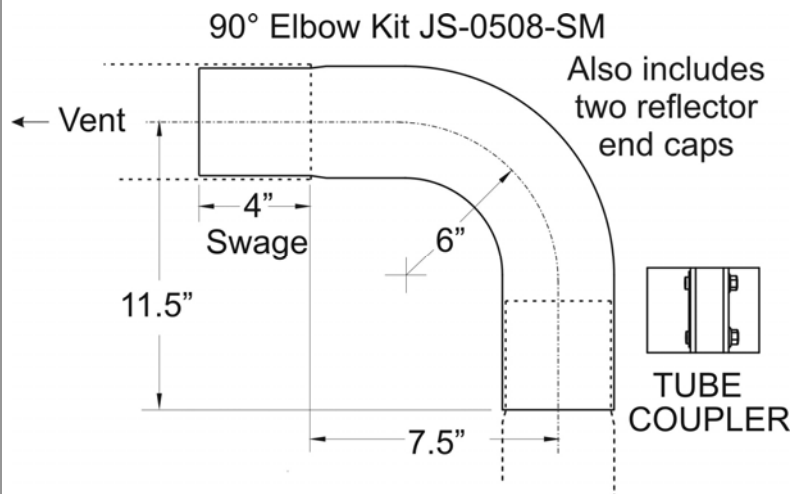
|  |                          |   |
|--|--------------------------|---|
| <b>Fresh Air Intake Adapter</b>  | JS-0532-SE               |    |
| <b>Fresh Air Intake Cap—Wall</b>   | JS-0532-VC               |    |
| <b>Fresh Air Intake Cap—Roof</b><br><br>4" roof cap<br>6" roof cap   | JA-0530-XX<br>JA-0531-XX |   |
| <b>2-Stage Low Voltage Digital Thermostat</b><br>(24 Volts - °F or °C selectable)<br><i>Not for use in corrosive or wet environments</i> | JS-0569-DT               |  |
| <b><u>Required For MULTIPLE HEATERS per Thermostat:</u></b>  |                          |   |
| <b>24 RELAY</b><br><u>Multiple Tube Heaters</u> controlled by a single 2-Stage Thermostat<br>(field installed)                           | JS-0568-XX               |  |

**90 degree Aluminized Steel Elbow Kit**

(Kit includes: aluminized steel elbow, coupler, and two reflector end caps)

For 180° elbow use two x JS-0508-SM, or use Model SETU / ITTU that includes 180° Turn Box

JS-0508-SM



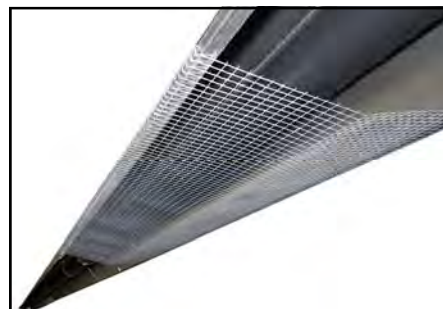
**Side Reflector Extension Kit-**  
10" deep, 10 ft long Each  
Includes 3 'S' Hooks

JS-0509-KT



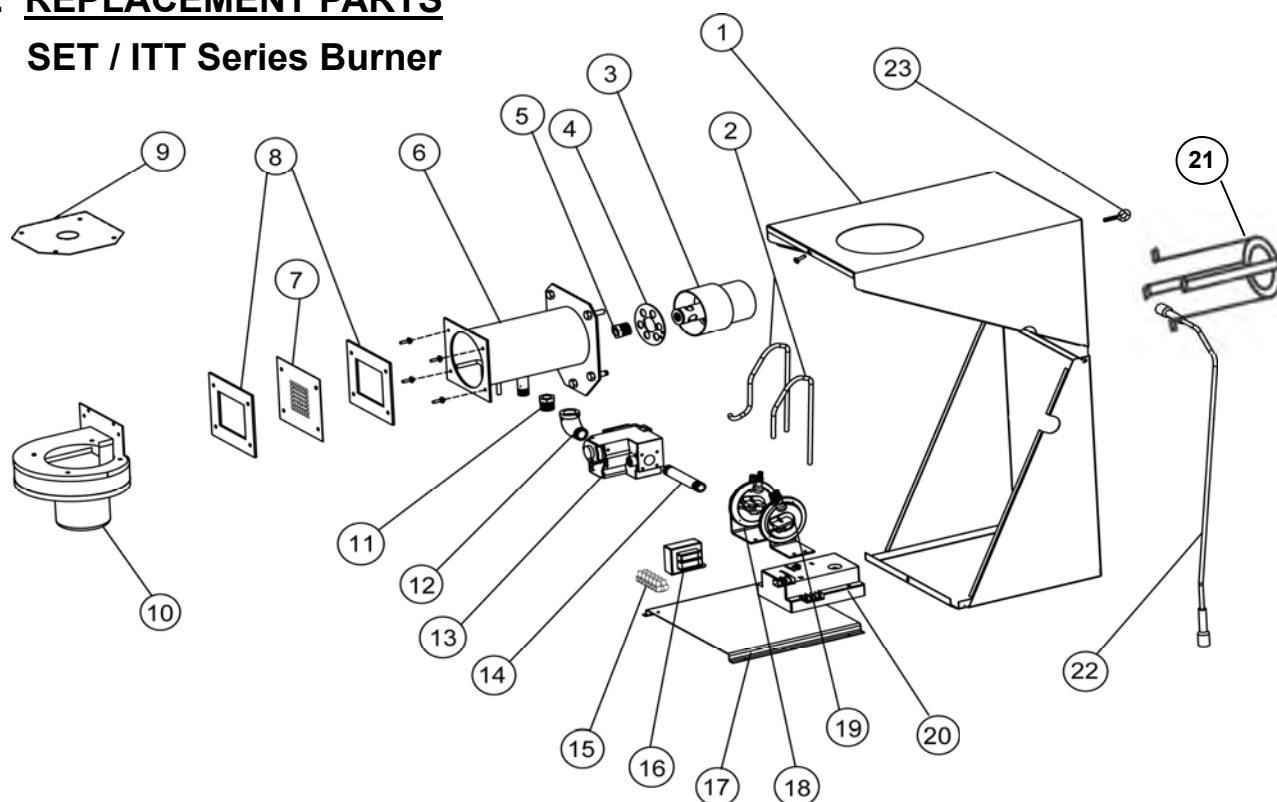
**Tube Protection Screen**  
-5 foot lengths

JA-0780-XX



## 29. REPLACEMENT PARTS

### SET / ITT Series Burner



| Burner Parts: Models SET, SET-F, SET-X; ITT, ITT-F, ITT-X         |  |   |            |
|---|--|---|------------|
| Note the Model # & Dash # on the rating plate for correct part(s) |  |   |            |
| #   | Model Dash # / Nominal High Input / Gas Type | PART DESCRIPTION                            | PART #     |
| 1   | All Models                                   | Burner housing (painted orange)             | JS-0582-XX |
| 2   | All Models                                   | Pressure Switch P.V.C. tubing set (2 x 20") | JS-0572-SE |
| 3   | All Models: 80 - 155 NG & LP                 | Burner Cup (80 - 155)                       | JS-0510-LP |
|   | All Models: 175-200 NG & LP                  | Burner Cup (175-200)                        | JS-0512-XX |
| 4   | All Models: 80-200 NG                        | Burner cup air restrictor ring .375         | JS-0596-XX |
|   | All Models: 80-155 LP                        | Burner cup air restrictor ring .500         | JS-0597-XX |
| 5   | -X Model: 80 LP                              | Gas orifice low intensity HTR 38 DMS        | JS-0738-DM |
|   | -X Model: 80 NG                              | Gas orifice low intensity HTR 17 DMS        | JS-0717-DM |
|   | -X Model: 110 LP                             | Gas orifice low intensity HTR 31 DMS        | JS-0731-DM |
|   | -X Model: 110 NG                             | Gas orifice low intensity HTR 3 DMS         | JS-0703-DM |
|   | -X Model: 130 LP                             | Gas orifice low intensity HTR 30 DMS        | JS-0730-DM |
|   | -X Model: 130 NG                             | Gas orifice low intensity HTR # 1           | JS-0701-DM |
|   | -X Model: 155 LP                             | Gas orifice low intensity HTR 9/64 inch     | JS-0714-IN |
|   | -X Model: 155 NG                             | Gas orifice low intensity HTR 1/4 inch      | JS-0725-IN |
|   | -X Model: 175 NG                             | Gas orifice low intensity HTR 6.7 mm        | JS-0767-MM |
|   | -X Model: 200 NG                             | Gas orifice low intensity HTR # N           | JS-070N-NS |
| 5   | SET/ITT & -F Model: 80 LP                    | Gas orifice low intensity HTR 36 DMS        | JS-0736-DM |
|   | SET/ITT & -F Model: 80 NG                    | Gas orifice low intensity HTR 18 DMS        | JS-0718-DM |
|   | SET/ITT & -F Model: 110 LP                   | Gas orifice low intensity HTR 31 DMS        | JS-0731-DM |
|   | SET/ITT & -F Model: 110 NG                   | Gas orifice low intensity HTR 5.2 mm        | JS-0752-MM |

Continued next page ...

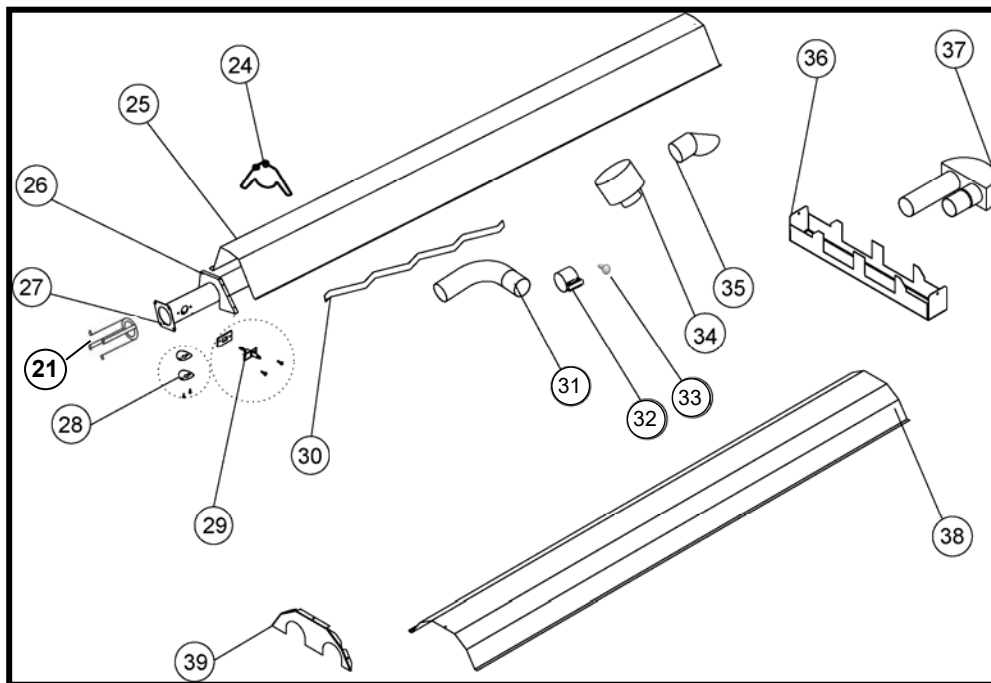


| ... continued from previous page                                 |  |   |            |
|--|--|---|------------|
| <b>Burner Parts: Models SET, SET-F, SET-X; ITT, ITT-F, ITT-X</b> |  |   |            |
| <b>Note the Model # on the rating plate for correct part(s)</b>  |  |   |            |
| #  | Model Dash # / Nominal High Input / Gas Type | PART DESCRIPTION                          | PART #     |
| 5  | SET/ITT & -F Model: 130 LP                   | Gas orifice low intensity HTR 29 DMS      | JS-0729-DM |
|  | SET/ITT & -F Model: 130 NG                   | Gas orifice low intensity HTR 5.8 mm      | JS-0758-MM |
|  | SET/ITT & -F Model: 155 LP                   | Gas orifice low intensity HTR 9/64 inch   | JS-0714-IN |
|  | SET/ITT & -F Model: 155 NG                   | Gas orifice low intensity HTR 1/4 inch    | JS-0725-IN |
|  | SET/ITT & -F Model: 175 NG                   | Gas orifice low intensity HTR 6.7 mm      | JS-0767-MM |
|  | SET/ITT & -F Model: 200 NG                   | Gas orifice low intensity HTR 19/64 inch  | JS-0730-IN |
| 6  | All Models                                   | Outer burner assembly - Black             | JS-0504-BK |
| 7  | All Models: NG & LP                          | Outlet equalizer plate (80 to 200)        | JS-0593-XX |
| 8  | All Models: NG & LP                          | Outlet blower gasket - EACH               | JS-0578-XX |
| 9  | -X Model: 80 NG & LP                         | blower ring: 1-5/16" hole c/w bird screen | JS-0594-ST |
|  | -X Model: 110 NG & LP                        | blower ring: 1-3/4" hole c/w bird screen  | JS-0595-SP |
|  | -X Model: 130 NG & LP                        | blower ring: 2-3/8" hole c/w bird screen  | JS-0595-UD |
|  | -X Model: 155 NG & LP                        | blower ring: 2" hole c/w bird screen      | JS-0595-AE |
|  | -X Model: 175 & 200 NG & LP                  | blower ring: 3.136" hole c/w bird screen  | JS-0595-AA |
| 9  | SET/ITT & -F Model: 80 & 110 NG & LP         | blower ring c/w 1 1/2" bird screen        | JS-0595-AC |
|  | SET/ITT & -F Model: 130 NG                   | blower ring c/w 1 3/4" bird screen        | JS-0595-EP |
|  | SET/ITT & -F Model: 130 LP                   | blower ring c/w 2 1/8" bird screen        | JS-0595-AB |
|  | SET/ITT & -F Model: 155 NG & LP              | blower ring c/w 1 3/4" bird screen        | JS-0595-EP |
|  | SET/ITT & -F Model: 175 NG                   | blower ring c/w 2" bird screen            | JS-0595-AE |
|  | SET/ITT & -F Model: 200 NG                   | blower ring c/w 3 1/8" bird screen        | JS-0595-EA |
| 10   | -X Model: 80 to 155 NG & LP; 175 NG          | 1/35 HP Blower assembly tube burner       | JS-0579-AA |
|  | -X Model: 200 NG                             | 1/20 HP Blower assembly tube burner       | JS-0579-ZZ |
| 10   | SET/ITT & -F Model: All Inputs NG & LP       | 1/35 HP Blower assembly tube burner       | JS-0579-AA |
| 11   | All Models                                   | Manifold bushing                          | JS-0589-XX |
| 12   | All Models                                   | 90 degree street elbow fitting            | JS-0588-XX |
| 13   | All Models: LP Gas                           | Two Stage Gas Valve LP VR8205Q2944        | JA-0507-TT |
|  | All Models: Natural Gas                      | Two Stage Gas Valve NG VR8205Q2480        | JA-0506-TT |
| 14   | All Models                                   | 4" nipple                                 | JS-0590-XX |
| 15   | All Models                                   | Transformer 120/24V, 20VA AT120B1028      | JA-0775-XX |
| 16   | All Models                                   | Terminal Block -6                         | JM-0455-DD |
| 17   | All Models                                   | Component mounting plate                  | JS-0581-SE |
| 18   | -X Model: 80/60 NG & LP                      | Air proving switch .65" W.C.              | JS-0575-YY |
|  | -X Model: 110 NG & LP                        | Air proving switch .90" W.C.              | JS-0575-ZB |
|  | -X Model: 130 NG & LP                        | Air proving switch 1.10" W.C.             | JS-0576-UL |
|  | -X Model: 155 NG & LP                        | Air proving switch 1.00" W.C.             | JS-0576-UG |
|  | -X Model: 175 NG                             | Air proving switch 1.30" W.C.             | JS-0575-YZ |
|  | -X Model: 200 NG                             | Air proving switch 1.50" W.C.             | JS-0575-ZL |
| 18   | Continued next page ...                      |   |            |

| ... continued from previous page   |  |  |            |
|--|--|--|------------|
| <b>Burner Parts: Models SET, SET-F, SET-X; ITT, ITT-F, ITT-X</b>                       |  |  |            |
| <b>Note the Model # on the rating plate for correct part(s)</b>                        |  |  |            |
| #  | Model Dash # / Nominal High Input / Gas Type | PART DESCRIPTION                                     | PART #     |
| 18   | SET/ITT & -F Model: 80 & 110 NG & LP         | Air proving switch .65" W.C.                         | JS-0575-YY |
|  | SET/ITT & -F Model: 130 NG & LP              | Air proving switch .90" W.C.                         | JS-0575-ZB |
|  | SET/ITT & -F Model: 155 NG & LP              | Air proving switch .80" W.C.                         | JS-0575-ZC |
|  | SET/ITT & -F Model: 175 NG                   | Air proving switch .90" W.C.                         | JS-0575-ZB |
|  | SET/ITT & -F Model: 200 NG                   | Air proving switch 1.40" W.C.                        | JS-0575-ZA |
| 19   | -X Model: 80 & 110 NG & LP                   | Blocked flue switch 0.80" W.C.                       | JS-0577-TS |
|  | -X Model: 130 NG & LP                        | Blocked flue switch 1.17" W.C.                       | JS-0577-XX |
|  | -X Model: 155 NG & LP                        | Blocked flue switch 0.90" W.C.                       | JS-0577-YY |
|  | -X Model: 175 & 200 NG                       | Blocked flue switch 0.90" W.C.                       | JS-0577-YY |
| 19   | SET/ITT & -F Model: 80 NG & LP; 175 NG       | Blocked flue switch .60" W.C.                        | JS-0577-TT |
|  | SET/ITT & -F Model: 110 NG & LP              | Blocked flue switch .46" W.C.                        | JS-0577-RR |
|  | SET/ITT & -F Model: 130 & 155 NG & LP        | Blocked flue switch .80" W.C.                        | JS-0577-TS |
|  | SET/ITT & -F Model: 200 NG                   | Blocked flue switch .70" W.C.                        | JS-0577-YA |
| 20   | See in Table Below                           | Ignition Control                                     |            |
| 21   | -X Model: 110, 130 & 155 NG & LP             | Flame Rectifier                                      | JS-0592-RT |
|  | -X Model: 175 & 200 NG                       | Flame Rectifier                                      | JS-0592-RZ |
| 22   | See in Table Below                           |  |            |
| 23   | All Models                                   | Eye bolt   | JF-1012-EB |
|  | SET/ITT Models (not -F; not -X)              | 24V Thermostat Relay Kit (not shown)                 | JS-0568-KT |
| <b>Burners with FENWAL IGNITION CONTROL - Models: SET-F, SET-X; ITT-F, ITT-X</b>       |  |  |            |
| 20   | All -F & -X Models                           | Fenwal 3-Trial 24Vac with blower relay               | JA-0567-XX |
|  | All Models                                   | Kit: Fenwal Control + Wire Harness + Cable + Igniter | JA-0568-KT |
| 22   | All -F & -X Models                           | Ignition Cable                                       | JS-0518-SA |
| <b>Burners with Discontinued HONEYWELL S87-J IGNITION CONTROL - Models: SET / ITT</b>  |  |  |            |
| 20   | SET / ITT Models: S87J Replacement Kit       | Kit: Fenwal Control + Wire Harness + Cable + Igniter | JA-0568-KT |
| 22   | SET / ITT Models                             | IGNITION CABLE HONEYWELL S87J                        | JS-0518-XX |
| <b>Burners with CHANNEL GASLITER MICRO 50N IGNITION CONTROL - Models: SET-C; ITT-C</b> |  |  |            |
| 20   | All -C Models                                | 3 Try Potted MICRO 50N DSI                           | JB-0568-AA |
|  | All -C Models (not shown)                    | Wiring Harness for connection of MICRO 50N           | JB-0568-WH |
| 22   | All -C Models                                | Ignition Cable (24") - 2 x 1/4" Spades               | JS-0518-SA |



**SET / ITT &  
SETU / ITTU  
TUBE SYSTEM PARTS**



**Tube System Parts: Models SET & SETU, ITT & ITTU & -F, -X Models**

**Note the Model # & Dash # on the Burner rating plate for correct part**

| #  | Model / Nominal High Input                   | PART DESCRIPTION                              | PART #       |
|----|--|---|--------------|
| 21 | -X Models only: 110, 130 & 155 NG & LP       | Flame Rectifier                               | JS-0592-RT   |
|    | -X Models only: 175 & 200 NG                 | Flame Rectifier                               | JS-0592-RZ   |
| 24 | All SET & ITT Models                         | Wire hanger                                   | JS-0505-EH   |
| 25 | All SET & ITT Models                         | Reflector (18" x 120")                        | JS-0502-EM   |
| 26 | All SET & ITT Models                         | Builder series reflector end cap              | JS-0502-ES   |
| 27 | Models 80 to 155                             | Aluminized tube, 10' flanged, swaged, ports   | JS-0501-SW-P |
|    | All Models using tube kits 30 to 60 ft       | Aluminized tube, 10' swaged                   | JS-0501-SW   |
|    | Models 175 & 200                             | Stainless tube, 10' flanged, swaged c/w ports | JS-0500-SS-P |
|    | All Models & tube lengths                    | Steel tube 10' swaged                         | JS-0515-SW   |
|    | SETU & ITTU 15' & 25' Models                 | Steel tube 5' swaged                          | JS-0515-SW-5 |
| 28 | All Models                                   | Sight glass assembly for tube heater          | JS-0536-XX   |
| 29 | All Models                                   | Igniter & gasket kit for tube heater          | JA-0571-KT   |
| 30 | Models 80 to 155 with 40 to 50 ft tube       | 24" Turbulator                                | JS-0533-UA   |
|    | Model 80 with 20 ft tube                     | 39" Turbulator                                | JS-0533-SK   |
|    | Model 175 x 50 to 60 ft & 200 x 50 ft tube   | 48" Turbulator                                | JS-0533-SH   |
|    | Models 80, 110 & 130 with 30 ft tube         | 60" Turbulator                                | JS-0533-SS   |
|    | Models 175 & 200 with 50 to 60 ft tube       | 72" Turbulator                                | JS-0533-UG   |
|    | Model 80 x 20 ft & 80 to 130 with 30 ft tube | 96" Turbulator                                | JS-0533-SL   |
| 31 | Optional Accessory                           | 90 degree elbow                               | JA-0508-SW   |
| 32 | All Models                                   | Torctite 4" swaged tube coupler               | JA-0516-SW   |
| 33 | Models 175 & 200                             | 1/4" Stainless Steel Rivet                    | JA-0516-RS   |
| 34 | Optional Accessory                           | 4" roof vent cap                              | JA-0530-XX   |
| 35 | Optional Accessory                           | 4" horizontal wall vent terminal              | JA-0528-XX   |
| 36 | All SETU & ITTU Models                       | U tube reflector hanger                       | JS-0505-BU   |
| 37 | All SETU & ITTU Models                       | U tube turn around box                        | JS-0513-BU   |
| 38 | All SETU & ITTU Models                       | Wide reflector 24" x 120"                     | JS-0502-BU   |
|    | SETU & ITTU 15' & 25' Models                 | Wide reflector 24" x 60"                      | JS-0502-BU5  |
| 39 | All SETU & ITTU Models                       | SE series "U" reflector end cap               | JS-0502-ND   |



**FOR GAS-FIRED INFRA-RED LOW INTENSITY TUBE HEATERS: SET / SETU & ITT / ITTU SERIES**

The Manufacturer warrants that this product is free from defects in material or workmanship under normal use and service subject to the terms of this document.

**TWO YEAR WARRANTY**

Subject to the conditions and limitations stated herein, during the term of this limited warranty, we will supply any component part (at our option a new or repaired component part) of the heater as defined below, excluding any labor, which the Manufacturer's examination determines to be defective in workmanship or material for a period of two years (2 years) from the date of installation, unless otherwise specified below. This warranty applies to the heater's original owner, and subsequent transferees and only if the unit is installed and operated in accordance with the printed instructions accompanying the unit and in compliance with all applicable installation codes and good trade practices. Warranty is only applicable to Schwank components, other parts are limited to their own Manufacturers warranty period of one year (1 year).

**FIVE YEAR WARRANTY**

The Manufacturer warrants the burner sub-assembly comprising of ceramic and immediate metal tubing, and the radiating tubes (excluding couplings) for a period of five years (5 years).

**WHAT IS NOT COVERED**

The Manufacturer shall not be responsible for any expenses, including service, labor, diagnosis, analysis, material or transportation charges incurred during removal or reinstallation of this product, or any of its components or parts. All labor or service charges shall be paid by the owner. This warranty does not cover heating products improperly installed, misused, exposed to or damaged by negligence, accident, corrosive or contaminating atmosphere, water, excessive thermal shock, impact, abrasion, normal wear due to use, alteration or operation contrary to the owner's manual or if the serial number has been altered, defaced or removed. This warranty shall not apply if the input to the heating product exceeds by more than 2% of the rated input on the rating plate. The Manufacturer shall not be liable for any default or delay in performance by its warranty caused by any contingency beyond its control, including war, government restrictions, or restraints, strikes, fire, flood, acts of God, or short or reduced supply of raw materials or products.

**WARRANTY PROCEDURE**

To establish the installation date for any purpose under this Limited Warranty, you must retain the original records that can establish the installation date of your unit. If you do not provide such documents, the start date of the term of this Limited Warranty will be based upon the date of unit manufacture, plus thirty (30) days. Failure to maintain the equipment through regular annual service maintenance by a qualified service technician shall void the warranty.

**LIMITATIONS AND EXCLUSIONS**

This document contains all warranties made by the Manufacturer and may not be varied, altered or extended by any person. There are no promises, or agreements extending from the Manufacturer other than the statements contained herein. THIS WARRANTY IS IN LIEU OF ALL WARRANTIES EXPRESSED OR IMPLIED, TO THE EXTENT AUTHORIZED BY THE LAWS OF THE JURISDICTION, INCLUDING SPECIFICALLY THE WARRANTIES OR MERCHANTABILITY OF FITNESS FOR A PARTICULAR PURPOSE.

It is understood and agreed that the Manufacturer's obligation hereunder is limited to repairing or replacing parts determined to be defective as stated above. In no event shall the Manufacturer be responsible for any alleged personal injuries or other special, incidental or consequential damages. As to property damages, contract, tort or other claim the Manufacturer's responsibility shall not exceed the purchase price paid for the product.

All replacement parts will be warranted for the unused portion of the warranty coverage period remaining on the applicable unit.

Some Authorities do not allow certain warranty exclusions or limitations on duration of warranty or the exclusions or limitations of incidental or consequential damages. In such cases, the above limitations or exclusions may not apply to you and are not intended to do so where prohibited by law. This warranty gives you specific legal rights. You may also have other rights which vary by jurisdiction.

**SCHWANK GROUP**  
**2 SCHWANK WAY, WAYNESBORO, GEORGIA. 30830**  
**5285 BRADCO BLVD. MISSISSAUGA, ON, L4W 2A6**

**Ph: 1-877-446-3727**  
**www.SchwankGroup.com**

**Fax: 1-866-361-0523**  
**www.InfraSave.com**