

SUBMITTAL DATA



ITT(U)

POSITIVE PRESSURE TWO STAGE SERIES GAS FIRED INFRA-RED TUBE HEATERS

PROJECT:	
ENGINEER:	
CONTRACTOR:	
DISTRIBUTOR:	
MODEL #:	
FUEL:	
APPROVED BY:	
DATE:	
APPROVAL #:	



NOTICE:

InfraSave reserves the right to make changes to equipment and specifications without obligation or notification.

This publication, or parts thereof, may not be reproduced in any form, without prior written consent from InfraSave. Unauthorized use or distribution of this publication is strictly prohibited.

*InfraSave
Mississauga, Ontario,
Waynesboro, Georgia,
Phone: 1-866-INFRA SV (463-7278)
Fax: 1-866-724-9265
<http://www.infrasave.com>
e-mail: info@infrasave.com*

<u>TABLE 1: MODEL CONFIGURATIONS</u>		OVERALL HEATER LENGTH	BTU/HOUR INPUT 0 TO 4500 FT ABOVE SEA LEVEL	TURBULATOR REQUIRED LENGTH	GAS PRESSURE & ELECTRICAL	SHIPPING WEIGHT (LBS.)			
ITT 200/140-60 *		59' 8"	200,000 / 140,000 (N.G. Only)	10'	<i>LINE</i> <i>MINIMUM</i> 5" W.C. N.G. 11" W.C. L.P.	210			
ITT 200/140-50 *		50' 0"		10'		180			
ITTU 200/140-30 *		31' 11"		10'		210			
ITT 175/125-60 *		59' 8"	175,000 / 125,000 (N.G. Only)	10'		<i>LINE</i> <i>MAXIMUM</i> 14" W.C. N.G. 14" W.C. L.P.	210		
ITT 175/125-50 *		50' 0"		10'			180		
ITTU 175/125-30 *		31' 11"		10'			210		
ITT 155/110-50		50' 0"	155,000 / 110,000	Not Required			<i>MANIFOLD</i> 3.5" W.C. N.G. 10" W.C. L.P.	180	
ITT 155/110-40		40' 4"		10'				150	
ITTU 155/110-20		22' 3"		10'				150	
ITT 130/90-40		40' 4"	130,000 / 90,000	10'				<i>MANIFOLD</i> 3.5" W.C. N.G. 10" W.C. L.P.	150
ITT 130/90-30		30' 8"		14'					120
ITTU 130/90-20		22' 3"		10'					150
ITTU 130/90-15		17' 3"		14'	120				
ITT 110/75-40		40' 4"	110,000 / 75,000	10'	½" INLET ELECTRICAL 120V, 60 HZ				150
ITT 110/75-30		30' 8"		14'					120
ITTU 110/75-20		22' 3"		10'		150			
ITTU 110/75-15		17' 3"		14'		120			
ITT 80/60-30		30' 8"	80,000 / 60,000	14'		ELECTRICAL 120V, 60 HZ			120
ITT 80/60-20		21' 0"		14'			90		
ITTU 80/60-15		17' 3"		14'			120		
ITTU 80/60-10		12' 7"		14'			90		

* ITT(U) 175/125 and ITT(U) 200/140 are available in Natural Gas only.

NOTE: Where required, series ITT(U) heaters will be supplied with the turbulator(s), snugly installed into the end tube(s) of the system configurations.

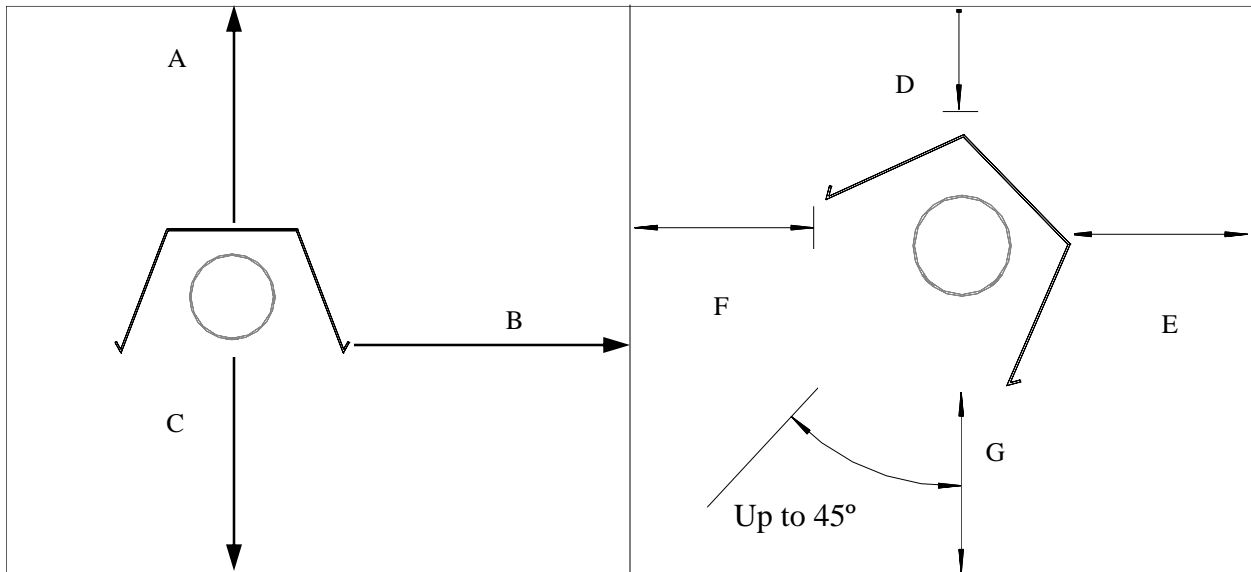
<u>TABLE 2: COMPONENT QUANTITIES PER HEATER MODEL</u>	<u>ITT</u>	<u>ITT</u>	<u>ITT</u>	<u>ITT</u>	<u>ITT</u>	<u>ITT</u>
	<input type="checkbox"/> 80/60 20'	<input type="checkbox"/> 80/60 <input type="checkbox"/> 110/75 <input type="checkbox"/> 130/90 30'	<input type="checkbox"/> 110/75 <input type="checkbox"/> 130/90 <input type="checkbox"/> 155/110 40'	<input type="checkbox"/> 155/110 50'	<input type="checkbox"/> 175/125 <input type="checkbox"/> 200/140 50'	<input type="checkbox"/> 175/125 <input type="checkbox"/> 200/140 60'
10' ALUMA-THERM TUBE w/ FLANGE	0	0	0	0	1	1
10' ALUMINIZED TUBE w/ FLANGE	1	1	1	1	0	0
10' ALUMINIZED TUBE	0	0	0	0	1	1
10' STEEL TUBE	1	2	3	4	3	4
10' REFLECTOR	2	3	4	5	5	6
REFLECTOR END CAP	2	2	2	2	2	2
TORCTITE COUPLER	1	2	3	4	4	5
TUBE / REFLECTOR WIRE HANGER	4	6	8	10	10	12
10' ALUMINIZED STEEL TURBULATOR	1	1	1	0	1	1
4' ALUMINIZED STEEL TURBULATOR	1	1	0	0	0	0
HEATERS ON THIS JOB						

<u>TABLE 2: COMPONENT QUANTITIES PER HEATER MODEL</u>	<u>ITTU</u>	<u>ITTU</u>	<u>ITTU</u>	<u>ITTU</u>
	<input type="checkbox"/> 80/60 10'	<input type="checkbox"/> 80/60 <input type="checkbox"/> 110/75 <input type="checkbox"/> 130/90 15'	<input type="checkbox"/> 110/75 <input type="checkbox"/> 130/90 <input type="checkbox"/> 155/110 20'	<input type="checkbox"/> 175/125 <input type="checkbox"/> 200/140 30'
10' ALUMA-THERM TUBE w/ FLANGE	0	0	0	1
10' ALUMINIZED TUBE w/ FLANGE	1	1	1	0
10' ALUMINIZED TUBE	0	0	0	1
10' STEEL TUBE	1	1	3	4
5' STEEL TUBE	0	2	0	0
10' REFLECTOR	1	2	2	3
5' REFLECTOR	0	2	0	0
REFLECTOR END CAP	2	2	2	2
TORCTITE COUPLER	2	4	4	6
TUBE / REFLECTOR WIRE HANGER	2	4	4	6
10' ALUMINIZED STEEL TURBULATOR	1	1	1	1
4' ALUMINIZED STEEL TURBULATOR	1	1	0	0
180 DEGREE TURN-AROUND BOX	1	1	1	1
HEATERS ON THIS JOB				

AP-SITT-BX-02B
ITT SD
RL: 2C
RD: FEB 2007
BA

TABLE 3: APPROVED MINIMUM CLEARANCES TO COMBUSTIBLES

MODEL	SUSPENDED HORIZONTALLY			SUSPENDED AT AN ANGLE UP TO 45 DEGREES			
	TOP	SIDE	BELOW	TOP	REAR	FRONT	BELOW
	A	B	C	D	E	F	G
ITT 200 / 140	7"	22"	68"	7"	1"	57"	68"
ITT 175 / 125	6.5"	20"	68"	6.5"	1"	47"	68"
ITT 155 / 110	6"	19"	64"	6"	1"	44"	64"
ITT 130 / 90	4"	11"	60"	5'	1"	35"	56"
ITT 110 / 75	3"	10"	60"	4.5"	1"	26"	54"
ITT 80 / 60	2.5"	6"	42"	3.5"	1"	23"	38"



SECTION DETAILS

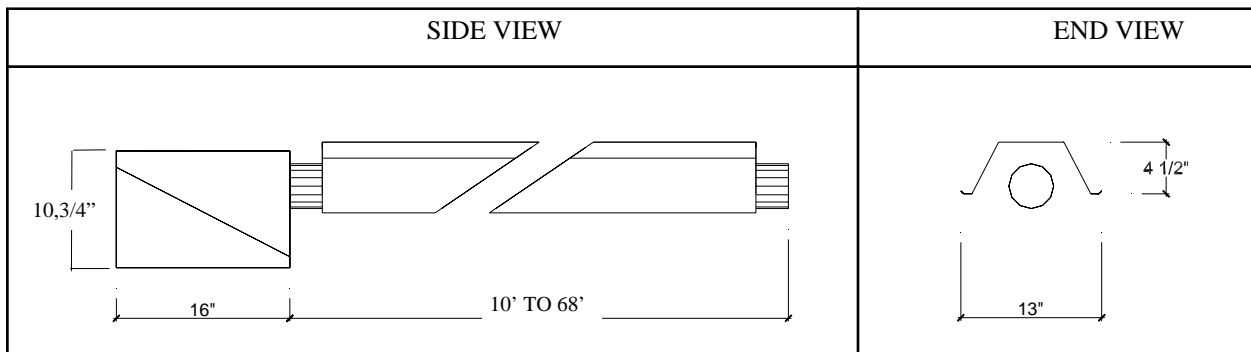
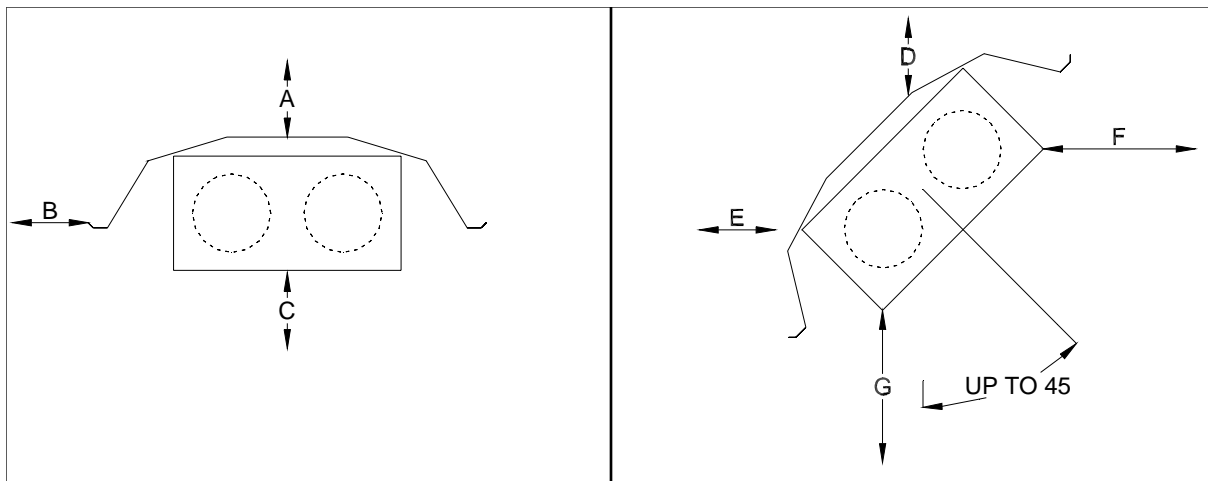
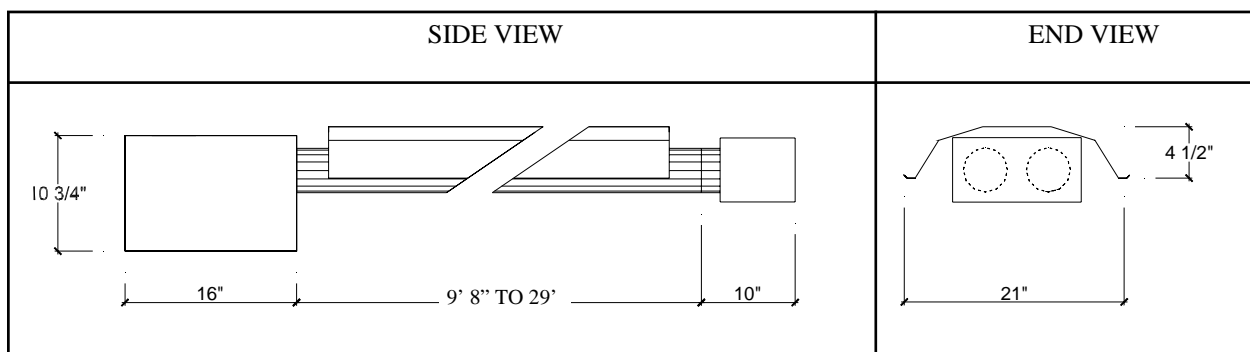


TABLE 3: APPROVED MINIMUM CLEARANCES TO COMBUSTIBLES

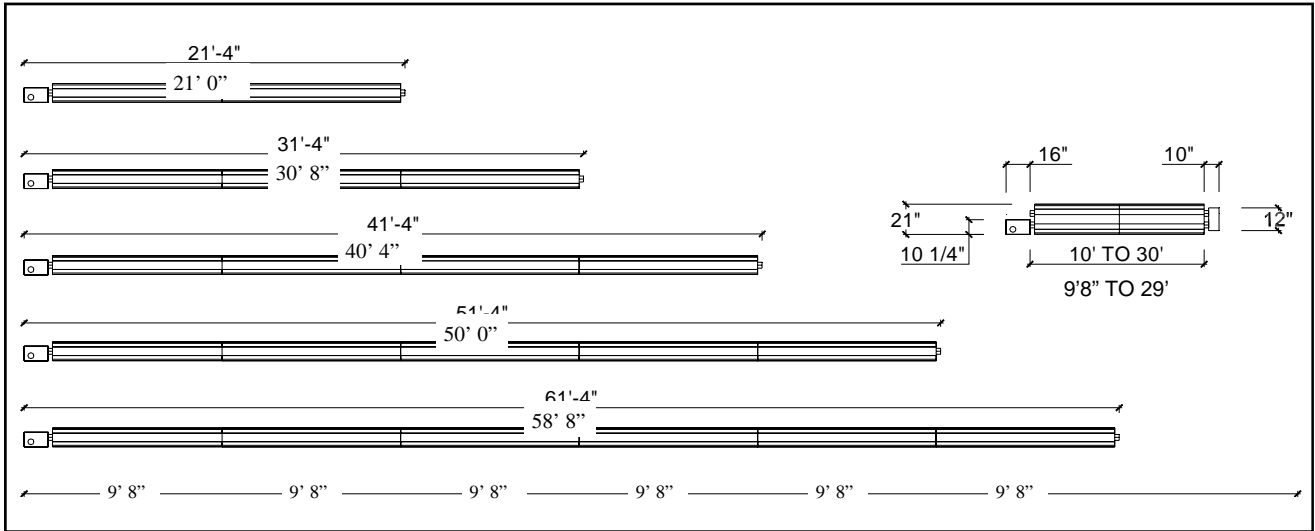
MODEL	SUSPENDED HORIZONTALLY			SUSPENDED AT AN ANGLE UP TO 45 DEGREES			
	TOP	SIDE	BELOW	TOP	REAR	FRONT	BELOW
	A	B	C	D	E	F	G
ITTU 200 / 140	7"	22"	68"	7"	1"	57"	68"
ITTU 175 / 125	6.5"	20"	68"	6.5"	1"	47"	68"
ITTU 155 / 110	6"	19"	64"	6"	1"	44"	64"
ITTU 130 / 90	4"	11"	60"	5"	1"	35"	56"
ITTU 110 / 75	3"	10"	60"	4.5"	1"	26"	54"
ITTU 80 / 60	2.5"	6"	42"	3.5"	1"	23"	38"



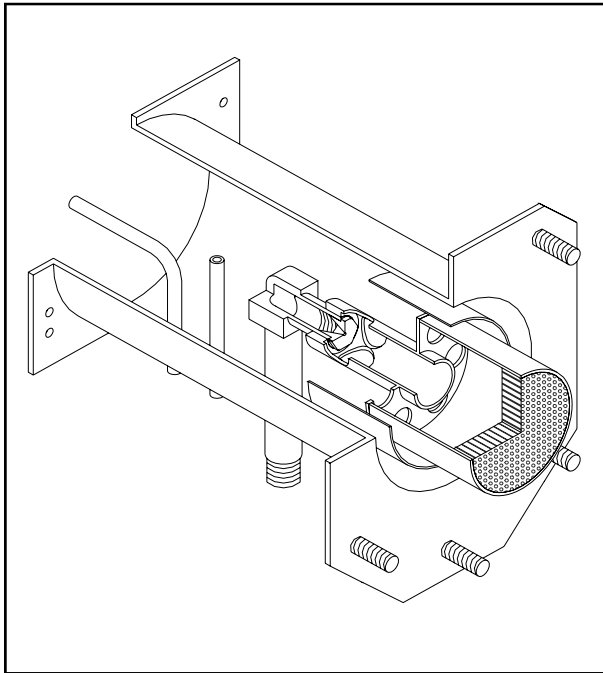
SECTION DETAILS



TOP VIEWS OF SYSTEMS



CUT-AWAY BURNER VIEW



<u>OPTIONAL ACCESSORIES</u>	<u>PROJECT QTY</u>
90 DEGREE ELBOW KIT JM-0508-KT 1 ELBOW, 2 REFLECTOR END CAPS, 1 CLAMP.	
180 DEGREE ELBOW KIT JM-0513-KT 1 ELBOW, 2 REFLECTOR END CAPS, 1 CLAMP.	
4" FRESH AIR INTAKE ADAPTER JS-0532-SE	
4" FRESH AIR INTAKE CAP JS-0532-VC	
4" ROOF FLUE VENT TERMINAL JA-0530-XX	
4" WALL FLUE VENT TERMINAL JA-0528-XX	
USA ONLY:	
FLEX GAS CONNECTOR 1/2" x 24" 45,000 TO 155,000 BTUH JL-0771-XX	
FLEX GAS CONNECTOR 3/4" x 24" 175,000 TO 200,000 BTUH JL-0771-XX	
CANADA ONLY:	
HOSE GAS CONNECTOR 1/2" x 36" 45,000 TO 155,000 BTUH JL-0771-RC	
HOSE GAS CONNECTOR 3/4" x 36" 175,000 TO 200,000 BTUH JL-0771-RB	
THERMOSTAT 2 STAGE 24V DIGITAL JS-0569-DT NOTE: Each heater requires individual thermostat - control logic for multiple heaters per thermostat is not supplied or supported by InfraSave.	

COMPONENT DESCRIPTION

IGNITION	DIRECT SPARK	HONEWELL S87J - 24 VAC
COMBINATION GAS VALVE	HONEYWELL 24 VOLT TWO STAGE NOTE: ITT(U) 175/125 and ITT(U) 200/140 are available in Natural Gas only.	-NATURAL GAS 3.5" / 1.7" W.C. MANIFOLD PRESSURE -PROPANE 10" / 4.9" W.C. MANIFOLD PRESSURE
REFLECTORS	10' LONG, OVERLAPPING ENTIRE LENGTH OF THE HEATER- EXCEPT FOR 15' SYSTEMS WHICH WILL ALSO HAVE 5' REFLECTORS	
REFLECTOR END CAPS	ALUMINIZED STEEL	
TUBES 60 THRU 155 MBTUH INPUT	FIRST SECTION IS 10' LONG, 4" DIAMETER, 16 GA. ALUMINIZED STEEL WITH ONE SWAGED END' EACH ADDITIONAL SECTION IS 10' LONG, 4" DIAMETER, 16 GA. HOT ROLLED STEEL WITH AND ONE SWAGED END EXCEPT FOR 15' SYSTEMS WHICH WILL ALSO HAVE 5' TUBES	
TUBES 175 & 200 MBTUH INPUT	FIRST SECTION IS 10' LONG, 4" DIAMETER, 16 GA. ALUMA-THERM WITH ONE SWAGED END. SECOND SECTION IS 10' LONG, 4" DIAMETER, 16 GA. ALUMINIZED STEEL WITH ONE SWAGED END. EACH ADDITIONAL SECTION IS 10' LONG, 4" DIAMETER, 16 GA. HOT ROLLED STEEL WITH ONE SWAGED END.	
HANGERS	TWO HANGERS SUPPORT EACH LENGTH OF TUBE	
COUPLING KIT	TORCTITE COUPLER C/W 2 BOLTS	
ELBOWS	90 DEGREE ELBOW 4" DIAMETER, 16 GA. ALUMINIZED STEEL, 8 ½" CENTRE RADIUS WITH ONE SWAGED END. 180 DEGREE ALUMINIZED STEEL TURN-AROUND BOX WITH ONE SWAGED END.	
BURNER HOUSING	BOTTOM FOLDS AWAY, PROVIDING ACCESS FROM TWO SIDES, END, AND BOTTOM	
BURNER	INCORPORATES EFFECTILE CERAMIC BURNER HEAD.	
SAFETY SWITCHES	TWO SEPARATE AIR PRESSURE SWITCHES SENSE ADEQUATE COMBUSTION AIR AND POTENTIAL BLOCKED FLUE	
BLOWER	3300 RPM 110 VOLT	